

# Microbial Genomic DNA

Strain: JCM 12116  
Organism: *Saccharibacter floricola*

RIKEN DNA Bank catalog #

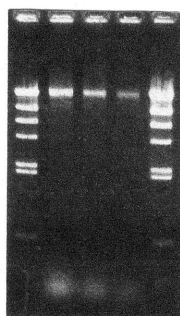
JGD 08233  
Lot # : 110817

Final concentration : 10 ng/ul  
Shipping amount : 100 ul

## 1. Electrophoresis of Genomic DNA

Date : 2011/9/1

Electrophoresis : 1% agarose gel, 1x TAE buffer  
Loading DNA amount : 200, 100, and 50 ng/lane  
Size marker : Lambda/HindIII (200 ng/lane)



Marker  
Lambda/HindIII  
(NEB#N3012S)

9.4 23.1  
4.4 6.6  
2.0 2.3  
0.6  
(Kb)

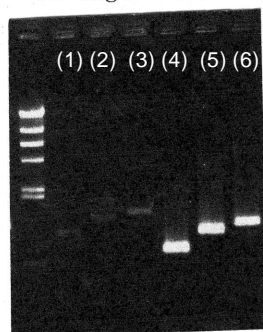
## 2. PCR Amplification

Date : 2011/9/2

Conditions of PCR (16S ribosomal RNA genes)

Template : 100 fold diluted DNA, 1 ul  
Enzyme : KOD Plus (Toyobo)  
Volume : 20 ul

Reaction program: 94 degC 2 min  
x30 cycle  $\left( \begin{array}{l} 94 \text{ degC } 15 \text{ sec} \\ 60 \text{ degC } 30 \text{ sec} \\ 68 \text{ degC } 60 \text{ sec} \end{array} \right)$   
68 degC 2 min



PCR primers

Eubacteria set	
EB-20F	5' AGTTTGATCCTGGCTC 3'
EB-350F	5' TACGGGAGGCAGCAG 3'
EB-1100R	5' AGGGTTGCGCTCGTTG 3'
EB-1400R	5' ACGGGCGGTGTGTAC 3'
EB-1530R	5' AAGGAGGTGATCCAGCC 3'

Sample Number

	EB-20F	EB-350F
EB-1100R	(1)	(4)
EB-1400R	(2)	(5)
EB-1530R	(3)	(6)

Electrophoresis : 1% agarose gel, 1x TAE buffer  
Loading DNA amount : 5 ul PCR product/lane  
Size marker : Lambda/HindIII (200 ng/lane)

## 3. Nucleotide sequence of 16S rRNA gene

 Confirmed date : 2011/9/7