

# Microbial Genomic DNA

Strain : **JCM 11197<sup>T</sup>**  
 Organism : ***Acetobacter syzygii***

RIKEN DNA Bank catalog #

JGD : **08003**Lot # : **08060\_B3J1**

## 1. Shipping

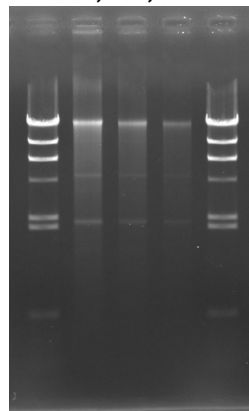
Volume : **35** uL

## 2. Concentration of Genomic DNA

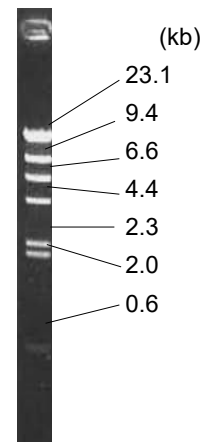
Concentration ( OD 260 ) : **146** ng/uL  
 A260 / A280 : **1.90**

## 3. Electrophoresis of Genomic DNA

Electrophoresis : 1% agarose gel, 1x TAE buffer  
 Loading DNA amount : **2.0, 1.0, 0.5** uL/lane  
 size marker : Lambda / HindIII ( 200 ng/Lane )  
**2.0, 1.0, 0.5** ( uL )

Date : **2023/10/3**

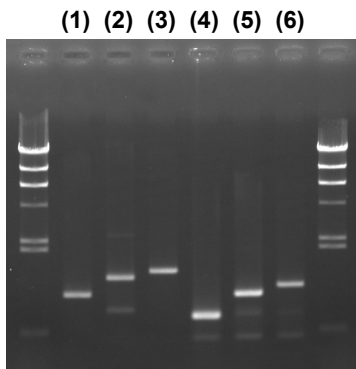
Marker ( Lambda / HindIII, NEB#3012S )



## 4. PCR Amplification

Conditions of PCR Ribosomal RNA ( rRNA ) gene  
 Template : 100 fold diluted DNA, 1 uL  
 Enzyme : KOD plus ( TOYOBO )  
 Volume : 20 uL

Reaction program :  
 x 30 cycle  $\left[ \begin{array}{ll} 94 \text{ degC} & 2 \text{ min} \\ 94 \text{ degC} & 15 \text{ sec} \\ 60 \text{ degC} & 30 \text{ sec} \\ 68 \text{ degC} & 60 \text{ sec} \\ 68 \text{ degC} & 2 \text{ min} \end{array} \right.$

Date : **2023/10/3**

## PCR primers for rRNA gene

EB-20F	5'- AGTTTGATCCTGGCTC -3'
EB-350F	5'- TACGGGAGGCAGCAG -3'
EB-1100R	5'- AGGGTTGCGCTCGTTG -3'
EB-1400R	5'- ACGGGCGGTGTGTAC -3'
EB-1530R	5'- AAGGAGGTGATCCAGCC -3'

Reference: Please visit online-manual site below.

[http://dna.brc.riken.jp/en/manualen/manual\\_genom\\_dna](http://dna.brc.riken.jp/en/manualen/manual_genom_dna)

## Sample Number

	EB-20F	EB-350F
EB-1100R	(1)	(4)
EB-1400R	(2)	(5)
EB-1530R	(3)	(6)

Electrophoresis : 1% agarose gel, 1x TAE buffer  
 Loading DNA amount : 3 uL PCR product/Lane  
 Size marker : Lambda / HindIII ( 200ng/Lane )

## 5. Nucleotide sequence of rRNA gene

Confirmed Date : **2023/10/4**