

Microbial Genomic DNA

Strain: JCM 2010
Organism: *Lactobacillus sp.*

RIKEN DNA Bank catalog #

JGD 07980

Lot # : 110107

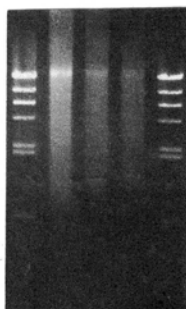
Final concentration : 25 ng/ul

Shipping amount : 100 ul

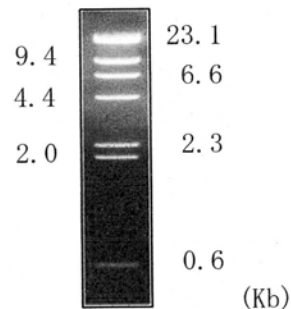
1. Electrophoresis of Genomic DNA

Date : 2011/8/5

Electrophoresis : 1% agarose gel, 1x TAE buffer
Loading DNA amount : 200, 100, and 50 ng/lane
Size marker : Lambda/HindIII (200 ng/lane)



Marker
Lambda/HindIII
(NEB#N3012S)



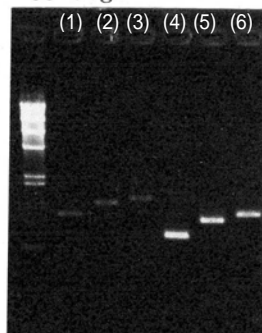
2. PCR Amplification

Date : 2011/5/11

Conditions of PCR (16S ribosomal RNA genes)

Template : 1000 fold diluted DNA, 1 ul
Enzyme : KOD Plus (Toyobo)
Volume : 20 ul

Reaction program: 94 degC 2 min
x30 cycle (94 degC 15 sec)
 (60 degC 30 sec)
 (68 degC 60 sec)
 68 degC 2 min



PCR primers

Eubacteria set	
EB-20F	5' AGTTGATCCTGGCTC 3'
EB-350F	5' TACGGGAGGCAGCAG 3'
EB-1100R	5' AGGGTTCGCTCGTTG 3'
EB-1400R	5' ACGGGCGGTGTGTAC 3'
EB-1530R	5' AAGGAGGTGATCCAGCC 3'

Sample Number

	EB-20F	EB-350F
EB-1100R	(1)	(4)
EB-1400R	(2)	(5)
EB-1530R	(3)	(6)

Electrophoresis : 1% agarose gel, 1x TAE buffer
Loading DNA amount : 5 ul PCR product/lane
Size marker : Lambda/HindIII (200 ng/lane)

3. Nucleotide sequence of 16S rRNA gene

Confirmed date : 2011/1/25