

# Microbial Genomic DNA

RIKEN DNA Bank catalog #

JGD : **07948**Strain : **JCM 2434**Lot # : **07948\_A9Jf**Organism : ***Aggregatibacter actinomycetemcomitans***

## 1. Shipping

Volume : **20** uL

## 2. Concentration of Genomic DNA

Concentration ( OD 260 ) :

**121** ng/uL

A260 / A280 :

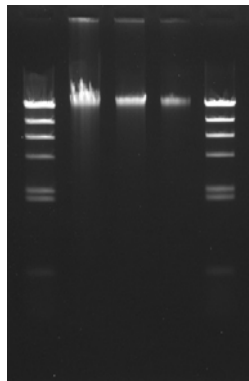
**1.97**

## 3. Electrophoresis of Genomic DNA

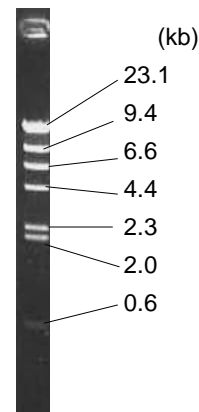
Electrophoresis : 1% agarose gel, 1x TAE buffer

Loading DNA amount : **2.0, 1.0, 0.5** uL/lane

size marker : Lambda / HindIII ( 200 ng/Lane )

**2.0, 1.0, 0.5** ( uL )Date : **2019/10/16**

Marker ( Lambda / HindIII, NEB#3012S )



## 4. PCR Amplification

Conditions of PCR Ribosomal RNA ( rRNA ) gene

Template : 100 fold diluted DNA, 1 uL

Enzyme : KOD plus ( TOYOBO )

Volume : 20 uL

Reaction program :

	94 degC	2 min
x 30 cycle	94 degC	15 sec
	60 degC	30 sec
	68 degC	60 sec
	68 degC	2 min

Date : **2019/10/16**

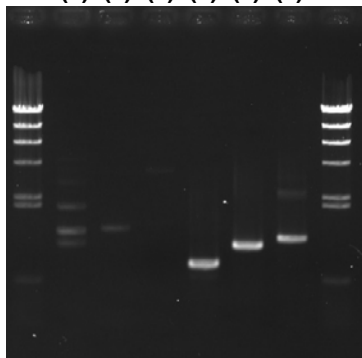
PCR primers for rRNA gene

EB-20F	5'- AGTTTGATCCTGGCTC -3'
EB-350F	5'- TACGGGAGGCAGCAG -3'
EB-1100R	5'- AGGGTTGCGCTCGTTG -3'
EB-1400R	5'- ACGGGCGGTGTGTAC -3'
EB-1530R	5'- AAGGAGGTGATCCAGCC -3'

Reference: Please visit online-manual site below.

[http://dna.brc.riken.jp/en/manualen/manual\\_genom\\_dna](http://dna.brc.riken.jp/en/manualen/manual_genom_dna)

(1) (2) (3) (4) (5) (6)



Sample Number

	EB-20F	EB-350F
EB-1100R	(1)	(4)
EB-1400R	(2)	(5)
EB-1530R	(3)	(6)

Electrophoresis : 1% agarose gel, 1x TAE buffer

Loading DNA amount : 3 uL PCR product/Lane

Size marker : Lambda / HindIII ( 200ng/Lane )

## 5. Nucleotide sequence of rRNA gene

■ Confirmed Date : **2017/2/9**(as original lot stock)