

Microbial Genomic DNA

Strain: JCM 1249^T
Organism: *Chromobacterium violaceum*

RIKEN DNA Bank catalog #

JGD 07721

Lot # : 100412

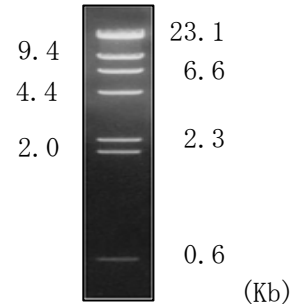
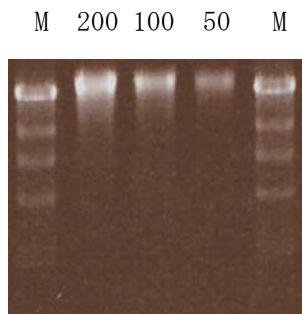
Final concentration :	100	ng/ul
Shipping amount :	100	ul

1. Electrophoresis of Genomic DNA

Date : 2010/7/21

Electrophoresis : 1% agarose gel, 1x TAE buffer
Loading DNA amount : 200, 100, and 50 ng/lane
Size marker : Lambda/HindIII (200 ng/lane)

Marker
Lambda/HindIII
(NEB#N3012S)



2. PCR Amplification

Date : 2010/6/23

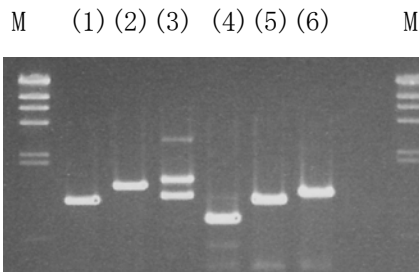
Conditions of PCR (16S ribosomal RNA genes)

Template : 100 fold diluted DNA, 1 ul
Enzyme : KOD Plus (Toyobo)
Volume : 20 ul

Reaction program: 94 degC 2 min
x30 cycle $\left(\begin{array}{l} 94 \text{ degC } 15 \text{ sec} \\ 60 \text{ degC } 30 \text{ sec} \\ 68 \text{ degC } 60 \text{ sec} \end{array} \right)$
68 degC 2 min

PCR primers

Eubacteria set	
EB-20F	5' AGTTGATCCTGGCTC 3'
EB-350F	5' TACGGGAGGCAGCAG 3'
EB-1100R	5' AGGGTTGCGCTCGTTG 3'
EB-1400R	5' ACGGGCGGTGTGTAC 3'
EB-1530R	5' AAGGAGGTGATCCAGCC 3'



Sample Number

	EB-20F	EB-350F
EB-1100R	(1)	(4)
EB-1400R	(2)	(5)
EB-1530R	(3)	(6)

Electrophoresis : 1% agarose gel, 1x TAE buffer
Loading DNA amount : 5 ul PCR product/lane
Size marker : Lambda/HindIII (200 ng/lane)