

# Microbial Genomic DNA

Strain : **JCM 20301**  
Organism : ***Pseudomonas aeruginosa***

RIKEN DNA Bank catalog #

JGD : **07094**Lot # : **07094\_B3Gc**

## 1. Shipping

Volume : **30** uL

## 2. Concentration of Genomic DNA

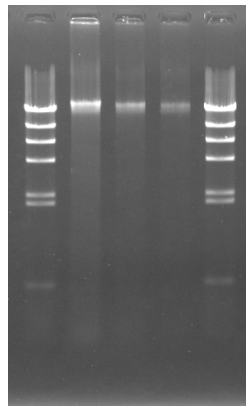
Concentration ( OD 260 ) : **225** ng/uL  
A260 / A280 : **2.03**

## 3. Electrophoresis of Genomic DNA

Electrophoresis : 1% agarose gel, 1x TAE buffer  
Loading DNA amount : **2.0, 1.0, 0.5** uL/lane  
size marker : Lambda / HindIII ( 200 ng/Lane )  
**2.0, 1.0, 0.5** ( uL )

Date : **2023/9/8**

Marker ( Lambda / HindIII, NEB#3012S )



## 4. PCR Amplification

Conditions of PCR Ribosomal RNA ( rRNA ) gene  
Template : 100 fold diluted DNA, 1 uL  
Enzyme : KOD plus ( TOYOBO )  
Volume : 20 uL

Reaction program :  
x 30 cycle

94 degC	2 min
94 degC	15 sec
60 degC	30 sec
68 degC	60 sec
68 degC	2 min

Date : **2023/9/8**

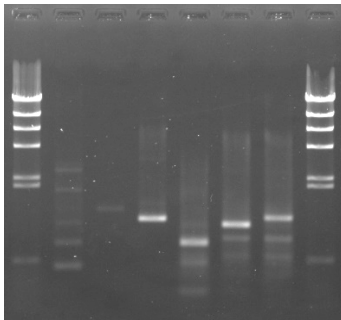
## PCR primers for rRNA gene

EB-20F	5'- AGTTTGATCCTGGCTC -3'
EB-350F	5'- TACGGGAGGCAGCAG -3'
EB-1100R	5'- AGGGTTGCGCTCGTTG -3'
EB-1400R	5'- ACGGGCGGTGTGTAC -3'
EB-1530R	5'- AAGGAGGTGATCCAGCC -3'

Reference: Please visit online-manual site below.

[http://dna.brc.riken.jp/en/manualen/manual\\_genom\\_dna](http://dna.brc.riken.jp/en/manualen/manual_genom_dna)

(1) (2) (3) (4) (5) (6)



## Sample Number

	EB-20F	EB-350F
EB-1100R	(1)	(4)
EB-1400R	(2)	(5)
EB-1530R	(3)	(6)

Electrophoresis : 1% agarose gel, 1x TAE buffer  
Loading DNA amount : 3 uL PCR product/Lane  
Size marker : Lambda / HindIII ( 200ng/Lane )

## 5. Nucleotide sequence of rRNA gene

Confirmed Date : **2023/9/12**