

RIKEN Clone ID : W01A106F08

Lot#: 8472_B2Ir

Vector : pENTR-TOPO

Gene	PTK2B	
Accession ID of Origin	BC042599.2	4111 bp
	CDS	3030 bp

● Plasmid DNA purification

Date : 22.10.03

Culture : LB (25 ug/ml Kanamycin) 5 ml → at 37 deg C over night

Date : 22.10.04

Purification : QIAGEN Miniprep kit → dH₂O 100 ul

● Digestion by restriction enzyme/Concentration calibration

Date : 22.10.04

DNA concentration (O.D.): 255 ng/ul

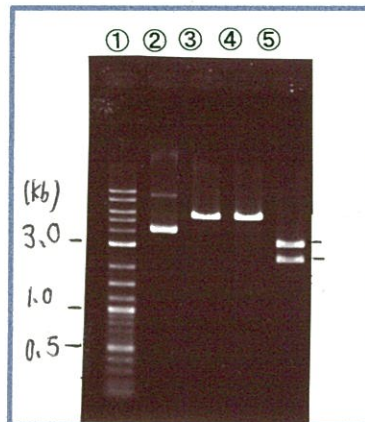
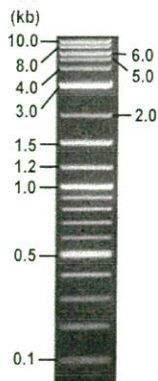
< Size of fragment expected from this clone >

DNA	0.4 ul
Enzyme (NotI + EcoRV)	0.5 + 0.5 ul
Buffer H	1 ul
dH ₂ O	<u>7.6</u> ul
Total	10 ul

NotI	5.7 kb
EcoRV	5.7 kb
NotI + EcoRV	2.5kb (Vector) 3.2 kb

Electrophoresis : 1% agarose gel, 1x TAE Buffer

Marker : 2-Log DNA Ladder (NEB#N3200L)



①:Marker
②:uncut
③:NotI
④:EcoRV
⑤:NotI+EcoRV

● Adjust plasmid DNA solution to 25 ng/ul

Date : 22.10.19

DNA (<u>255</u> ng/ul)	78.0 ul
10x TE	79.5 ul
dH ₂ O	<u>638.1</u> ul
Total	<u>795.6</u> ul

● Confirmation of the insertion sequence

Date : 22.10.19

Primer A	M13
Primer B	T7 long
Primer C	-
List of Sequencing Primers	http://dna.brc.riken.jp/en/GNPclone3en.html

● Shipping

Conc. : 25 ng/ul, Volume : 40 ul

Conc. : ng/ul, Volume : ul



APPROVED BY : <http://dna.brc.riken.jp/index.html>

S/N G:328 A:391 T:277 C: Primer B: T7 long

8472_W01A106F08_B2lr_T7long

Oct 05,2022 09:53AM, JST

KB.bcp

KB_3500_POP7_BDTv3.mob

Gray line indicates quality value

Oct 05,2022 10:21AM, JST

KB 1.4.1.8 Cap:17

5' CGCCAAGCTCTAATACGACTCACTATAGGG 3'

Pts 1450 to 13609 Pk1 Loc:1427

(QV) < 40.

Spacing:12.15 Pts/Panel1350

Plate Name: 20221005_GNP

