

**RIKEN Clone ID : W01A103K09**

Vector : pENTR-TOPO

Gene	OSBP2	
Accession ID of Origin	AK093196.1	2468 bp
	<i>CDS</i>	1650 bp

● Plasmid DNA purification

Date : 160726

Culture : LB (25 ug/ml Kanamycin) 5 ml -> at 37 deg C over night

Date : 160727

Purification : QIAGEN Miniprep kit -> dH<sub>2</sub>O 100 ul

● Digestion by restriction enzyme/Concentration calibration

Date : 160727

DNA concentration (O.D.): 152 ng/ul

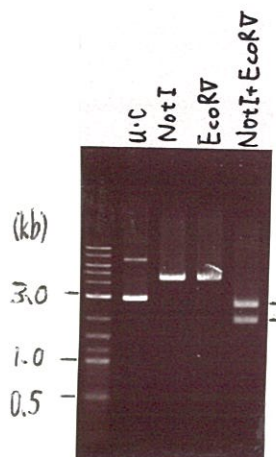
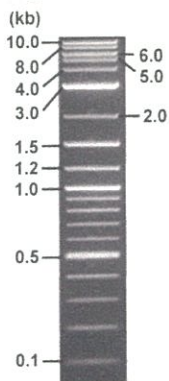
< Size of fragment expected from this clone >

DNA	0.6	ul
Enzyme (NotI + EcoRV)	0.5 + 0.5	ul
Buffer H		1 ul
dH <sub>2</sub> O	7.4	ul
Total		10 ul

NotI	4.4 kb
EcoRV	4.4 kb
NotI + EcoRV	2.5kb (Vector) 1.9 kb

Electrophoresis : 1% agarose gel, 1x TAE Buffer

Marker : 2-Log DNA Ladder (NEB#N3200L)



● Adjust plasmid DNA solution to 25 ng/ul

Date : 160729

● Confirmation of the insertion sequence

Date : 160729

DNA (152 ng/ul)	83.0	ul
10x TE	50.5	ul
dH <sub>2</sub> O	371.1	ul
Total	504.6	ul

Primer A	M13
Primer B	T7 long
Primer C	-
List of Sequencing Primers	<a href="http://dna.brc.riken.jp/en/GNPclone3en.html">http://dna.brc.riken.jp/en/GNPclone3en.html</a>

● Shipping

Conc. : 25 ng/ul, Volume : 40 ul

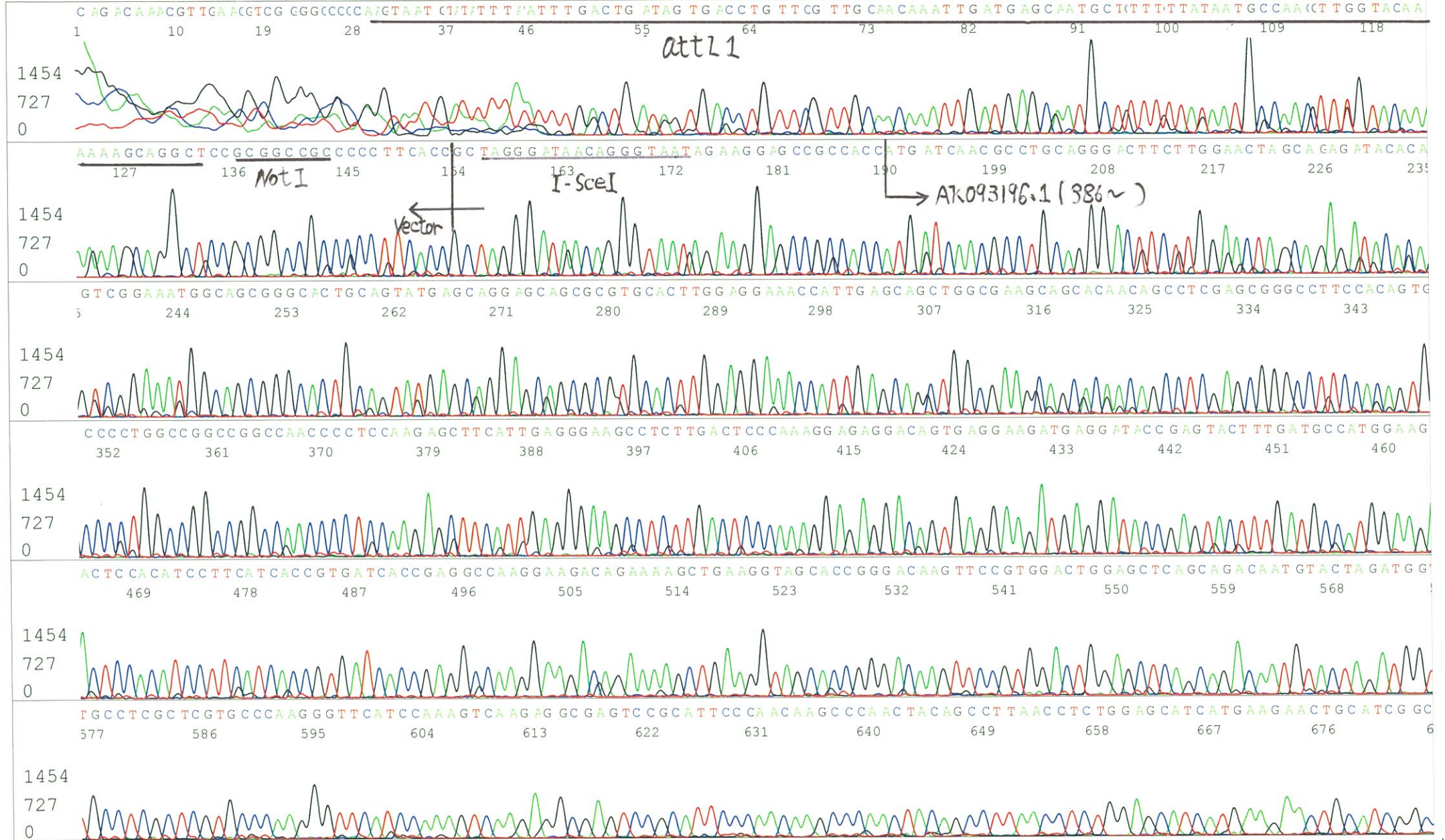
Conc. :      ng/ul, Volume :      ul



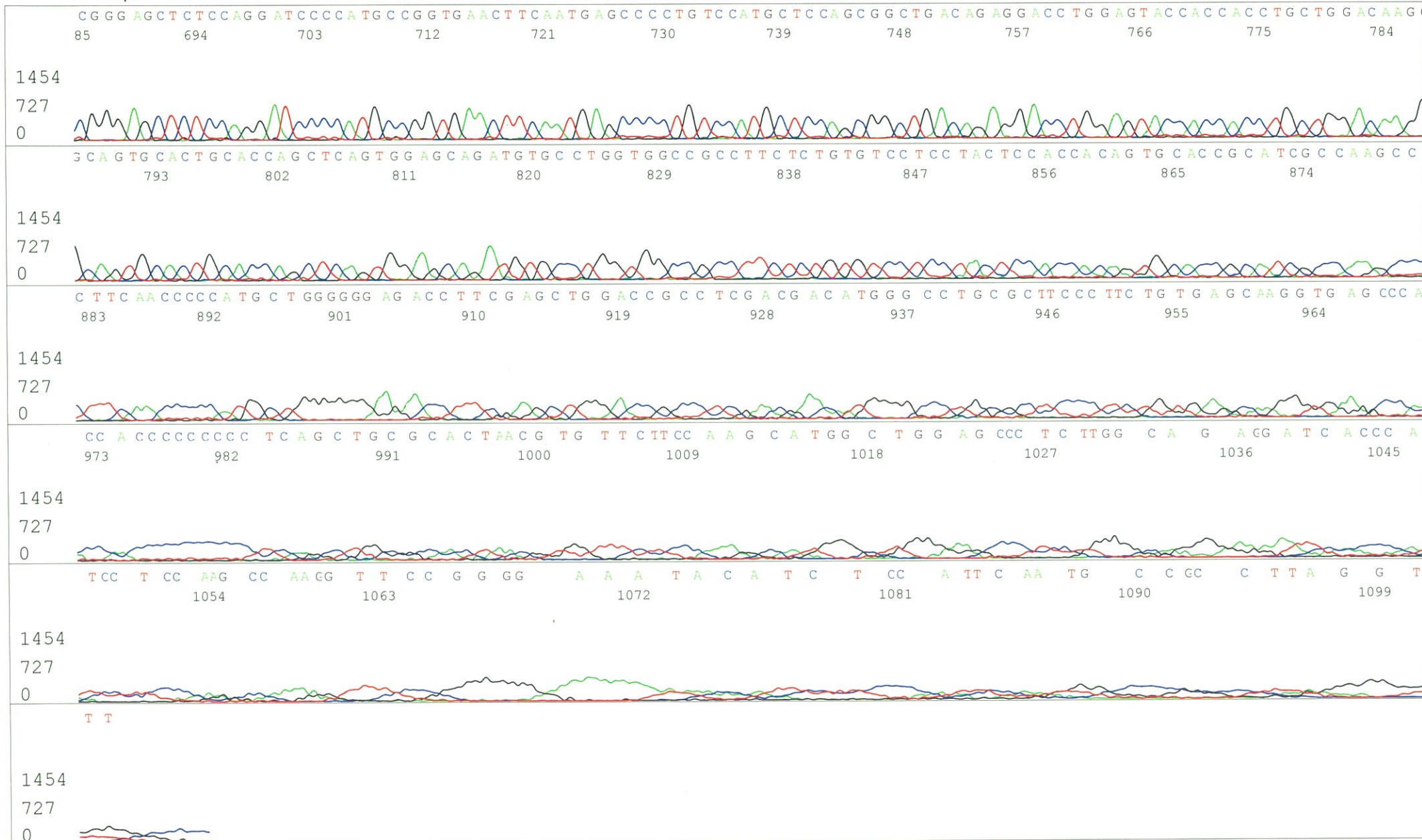
APPROVED BY : <http://dna.brc.riken.jp/index.html>

S/N G:51 A:48 T:38 C:59  
KB.bcp  
KB 1.4.1.8 Cap:2

Primer A : M13  
5' GTTTCCCAGTCACGACGTTGTA 3'



S/N G:51 A:48 T:38 C:59  
KB.bcp  
KB 1.4.1.8 Cap:2



S/N G:416 A:287 T:346 C:516

Primer B: T7 long

W01A103K09\_A6Gq\_T7long

Jul 29,2016 09:46AM, JST

KB.bcp

5' CGCCAAGCTCTAATACGACTCACTATAGGG 3'

KB\_3500\_POP7\_BDTv3.mob

Jul 29,2016 10:12AM, JST

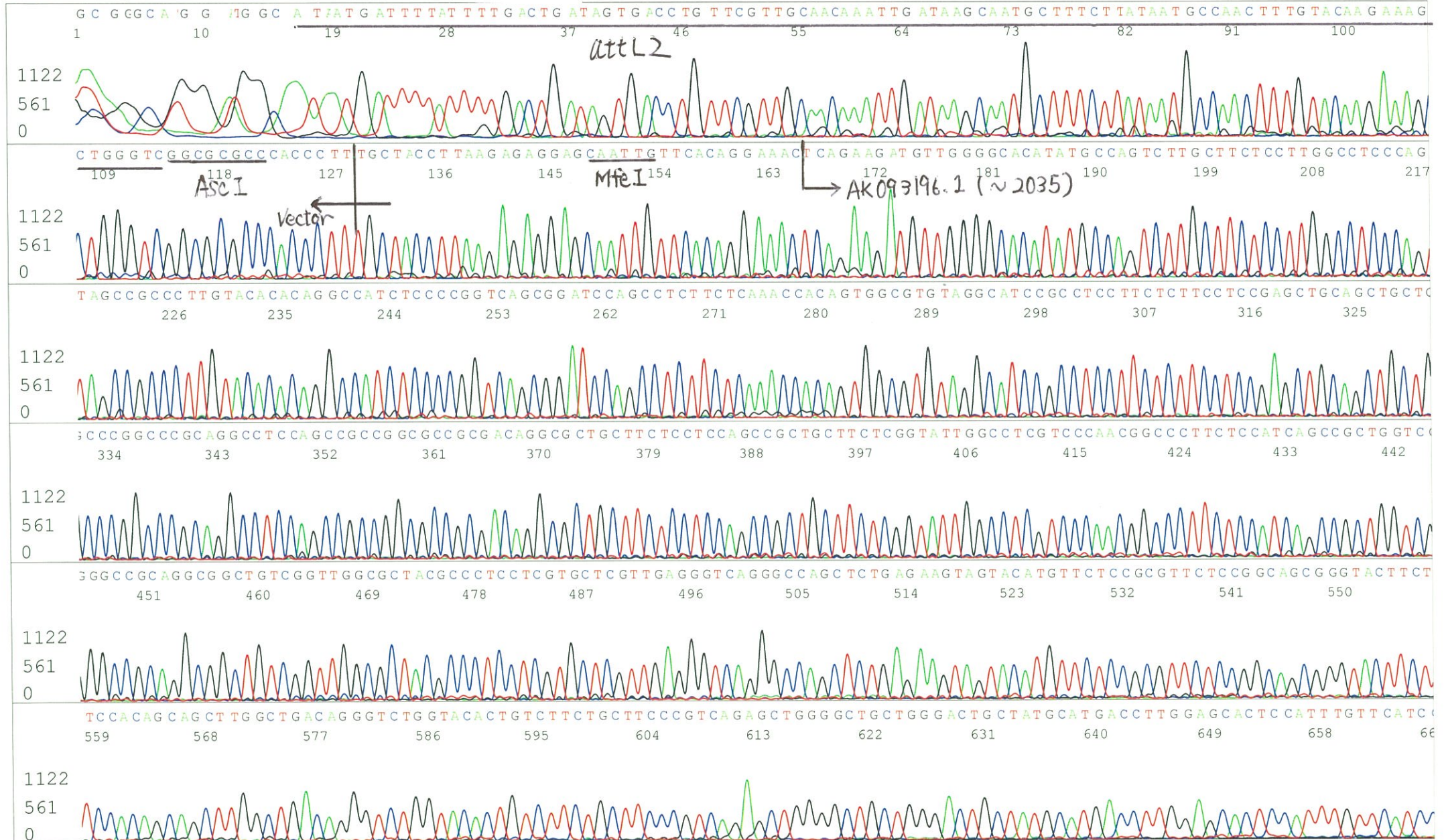
KB 1.4.1.8 Cap:5

Pts 1523 to 12440 Pk1 Loc:1500

Spacing:10.97 Pts/Panel1350

Version 6.0 HiSQV Bases: 942

Plate Name: 20160729\_mix



S/N G:416 A:287 T:346 C:516  
KB.bcp  
KB 1.4.1.8 Cap:5

