

RIKEN Clone ID : W01A085D16

Vector : pENTR-TOPO

Gene	CALR	
Accession No.	BC020493.1	1940 bp
	<i>CDS</i>	1254 bp
		63..1316

● Plasmid DNA purification

Date : 140213

Culture : LB (25 ug/ml Kanamycin) 5 ml -> at 37 deg C over night

Date : 140214

Purification : QIAGEN Miniprep kit -> dH₂O 100 ul

● Digestion by restriction enzyme/Concentration calibration

Date : 140214

DNA concentration (O.D.): 63 ng/ul

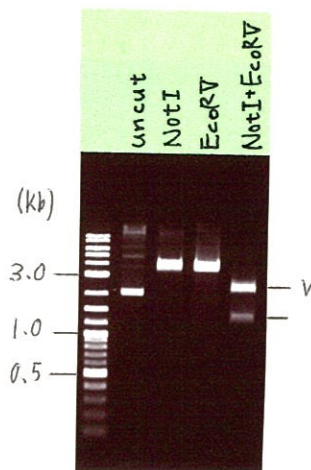
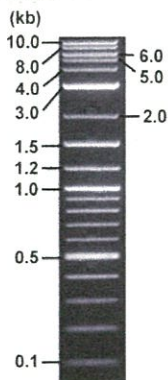
<Size of fragment expected from BC020493.1 >

DNA	0.7	ul
Enzyme (NotI + EcoRV)	0.5 + 0.5	ul
Buffer H	1	ul
dH ₂ O	7.3	ul
Total	10	ul

NotI	4712bp
EcoRV	4712 bp
NotI + EcoRV	2553bp (Vector) <u>1473</u> bp

Erectrophoresis : 1% agarose gel, 1x TAE Buffer

Marker : 2-Log DNA Ladder (NEB#N3200L)



● Confirmation of the insertion sequence

Date : 140219

Primer A	M13
Primer B	T7 long
Primer C	-
List of Sequencing Primers	http://dna.brc.riken.jp/en/GNPclone3en.html

● Adjustment of DNA concentration

Shipping amount : 40 ul

Concentration at the time of preparation of plasmid DNA : 25 ng/ul

Date : 140220

DNA (<u>63</u> ng/ul)	<u>80.0</u> ul
10x TE	<u>20.2</u> ul
dH ₂ O	<u>101.4</u> ul
Total	<u>201.6</u> ul

APPROVED BY :



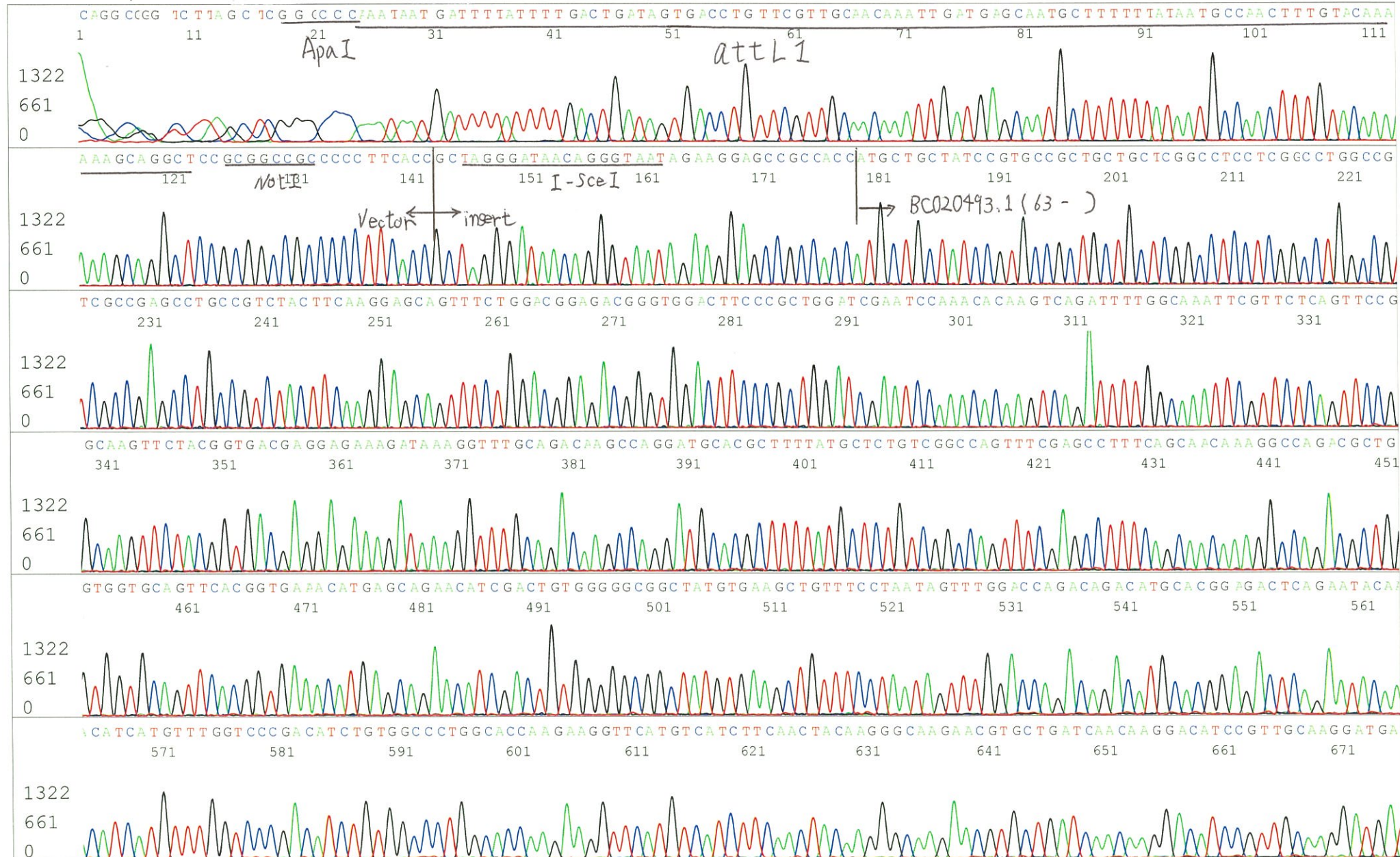
S/N G:68 A:82 T:55 C:68

Primer A : M13

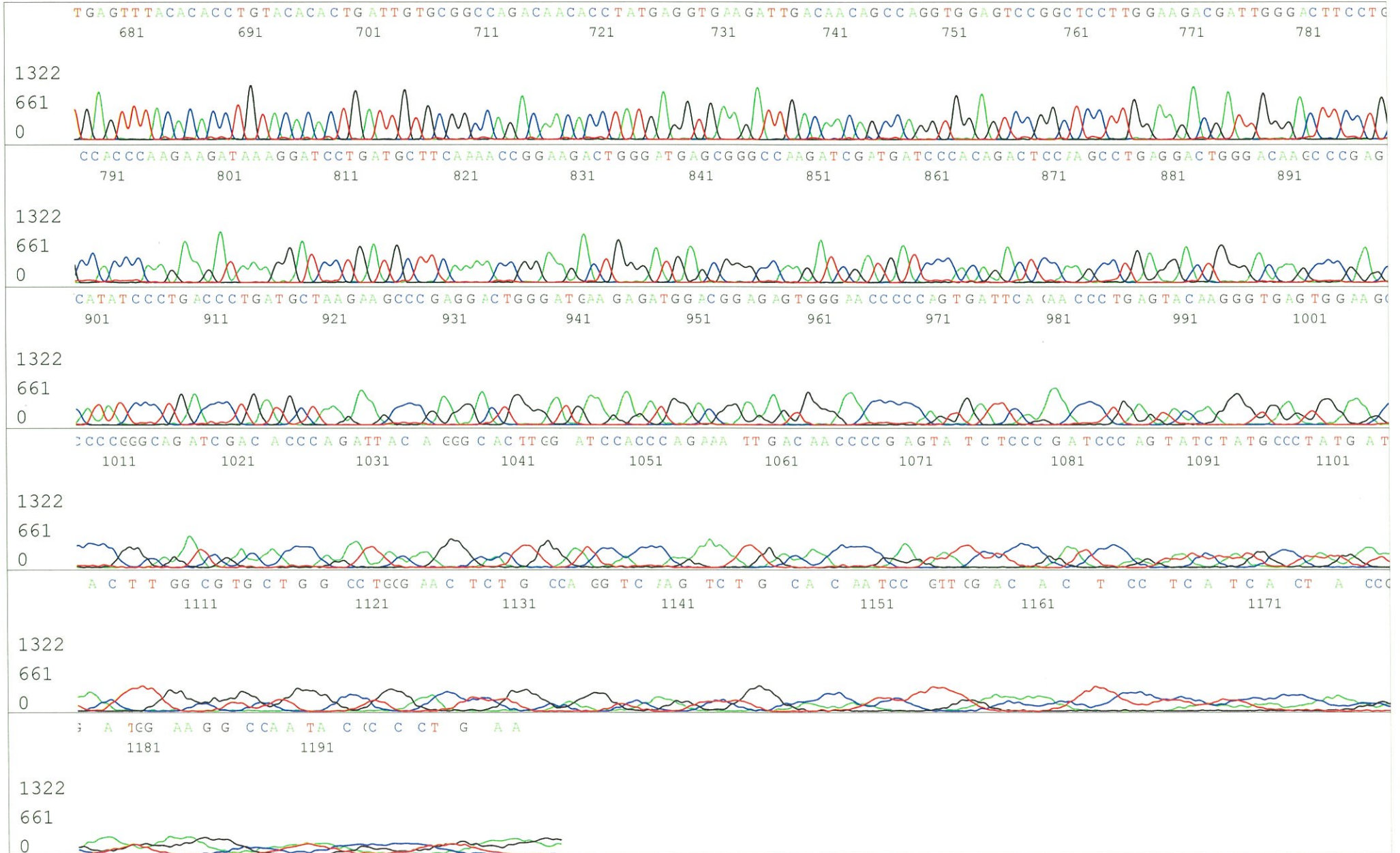
KB.bcp

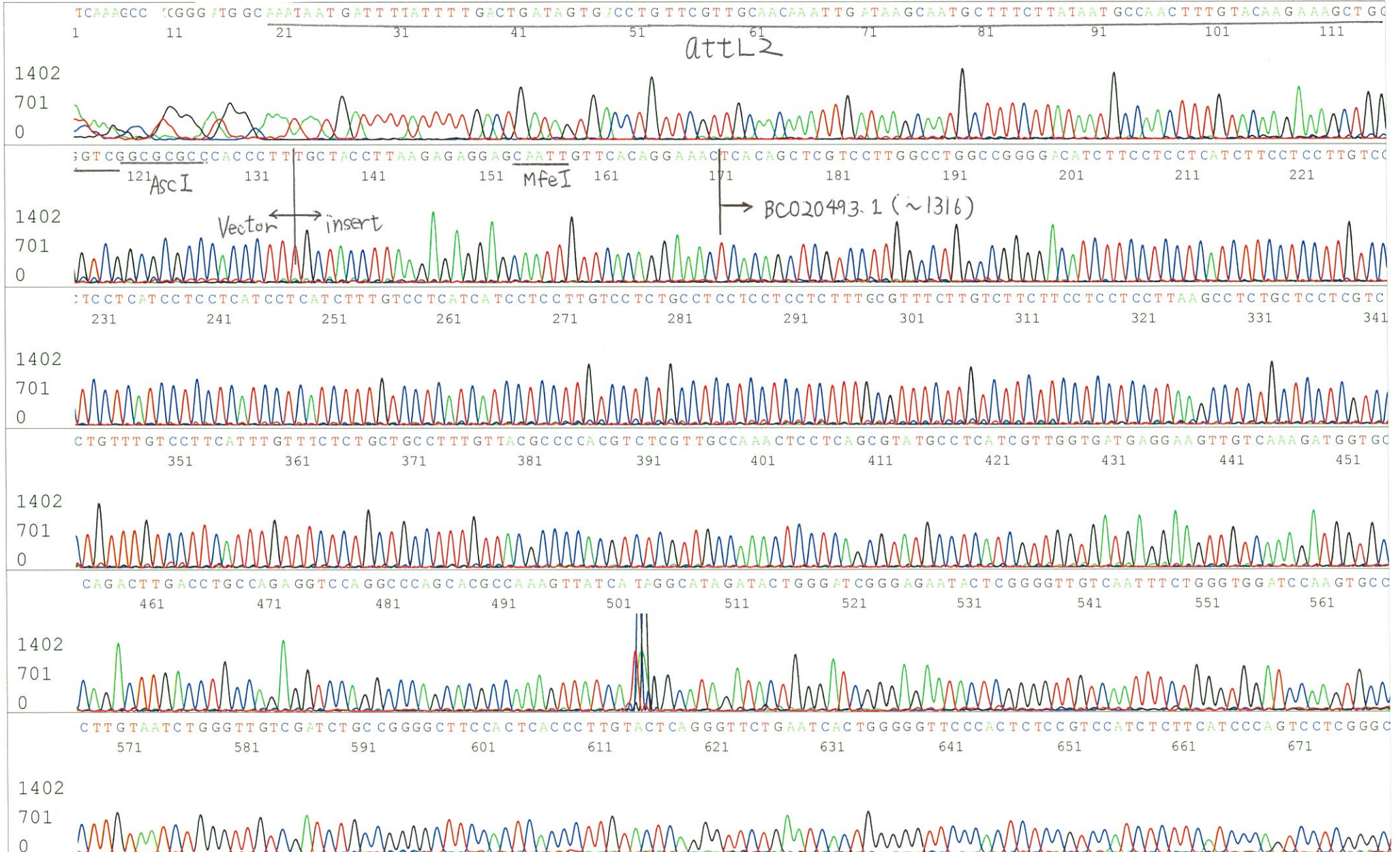
KB 1.4.1.8 Cap:19

5' GTTTTCCCAGTCACGACGTTGTA 3'



S/N G:68 A:82 T:55 C:68
KB.bcp
KB 1.4.1.8 Cap:19





S/N G:30 A:35 T:44 C:46

KB.bcp

KB 1.4.1.8 Cap:22

