

RIKEN Clone ID : W01A063J21

Vector : pENTR/D-TOPO

Gene	ALPL	
Accession No.	BC021289.2	2544 bp
	<i>CDS</i>	1575 bp
		189..1763

● Plasmid DNA purification

Date : 120620

Culture : LB (25 ug/ml Kanamycin) 5 ml -> 37°C O/N

Date : 120621

Purification : QIAGEN Miniprep kit -> dH₂O 100 ul

● Digestion by restriction enzyme/Concentration calibration

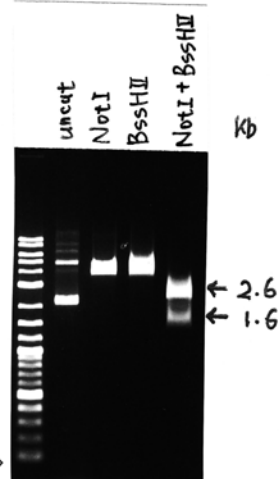
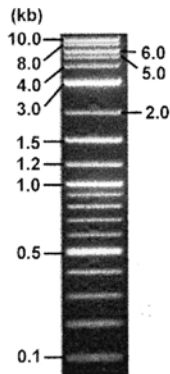
Date : 120621

DNA concentration (O.D.): 81 ng/ul

DNA	0.5	ul
Enzyme (NotI + BssHII)	0.5 + 0.5	ul
Buffer H	1	ul
dH ₂ O	7.5	ul
Total	10	ul

Electrophoresis : 1% agarose gel, 1x TAE Buffer

Marker : 2-Log DNA Ladder (NEB#N3200L)



<Expected digestion pattern from BC021289.2 CDS>

...2553, 1674 bp

● Adjust plasmid DNA solution to 25 ng/ul ~preparation for shipping~

Date : 120626

Shipped : 25 ng/ul, 40 ul

DNA (<u>81</u> ng/ul)	86.0	ul
10x TE	27.9	ul
dH ₂ O	164.7	ul
Total	278.6	ul

