

RIKEN Clone ID : W01A062C23

Vector : pENTR-TOPO

Gene	MYOD1	
Accession No.	BC064493.1	1699 bp
	<i>CDS</i>	963 bp
		63..1025

● Plasmid DNA purification

Date : 150108

Culture : LB (25 ug/ml Kanamycin) 5 ml -> at 37 deg C over night

Date : 150109

Purification : QIAGEN Miniprep kit -> dH₂O 100 ul

● Digestion by restriction enzyme/Concentration calibration

Date : 150109

DNA concentration (O.D.): 111 ng/ul

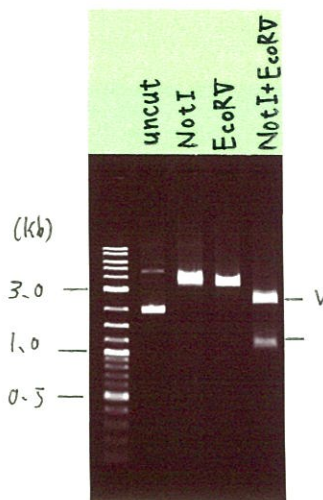
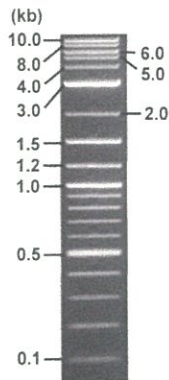
<Size of fragment expected from BC064493.1 >

DNA	0.4	ul
Enzyme (NotI + EcoRV)	0.5 + 0.5	ul
Buffer H	1	ul
dH ₂ O	7.6	ul
Total	10	ul

NotI	3735	bp
EcoRV	3735	bp
NotI + EcoRV	2553bp (Vector)	1182 bp

Electrophoresis : 1% agarose gel, 1x TAE Buffer

Marker : 2-Log DNA Ladder (NEB#N3200L)



● Adjust plasmid DNA solution to 25 ng/ul

Date : 150115

DNA (<u>111</u> ng/ul)	85.0	ul
10x TE	37.7	ul
dH ₂ O	254.7	ul
Total	377.4	ul

● Confirmation of the insertion sequence

Date : 150115

Primer A	M13
Primer B	T7 long
Primer C	-
List of Sequencing Primers	http://dna.brc.riken.jp/en/GNPclone3en.html

● Shipping

Conc. : 25 ng/ul, Volume : 40 ul

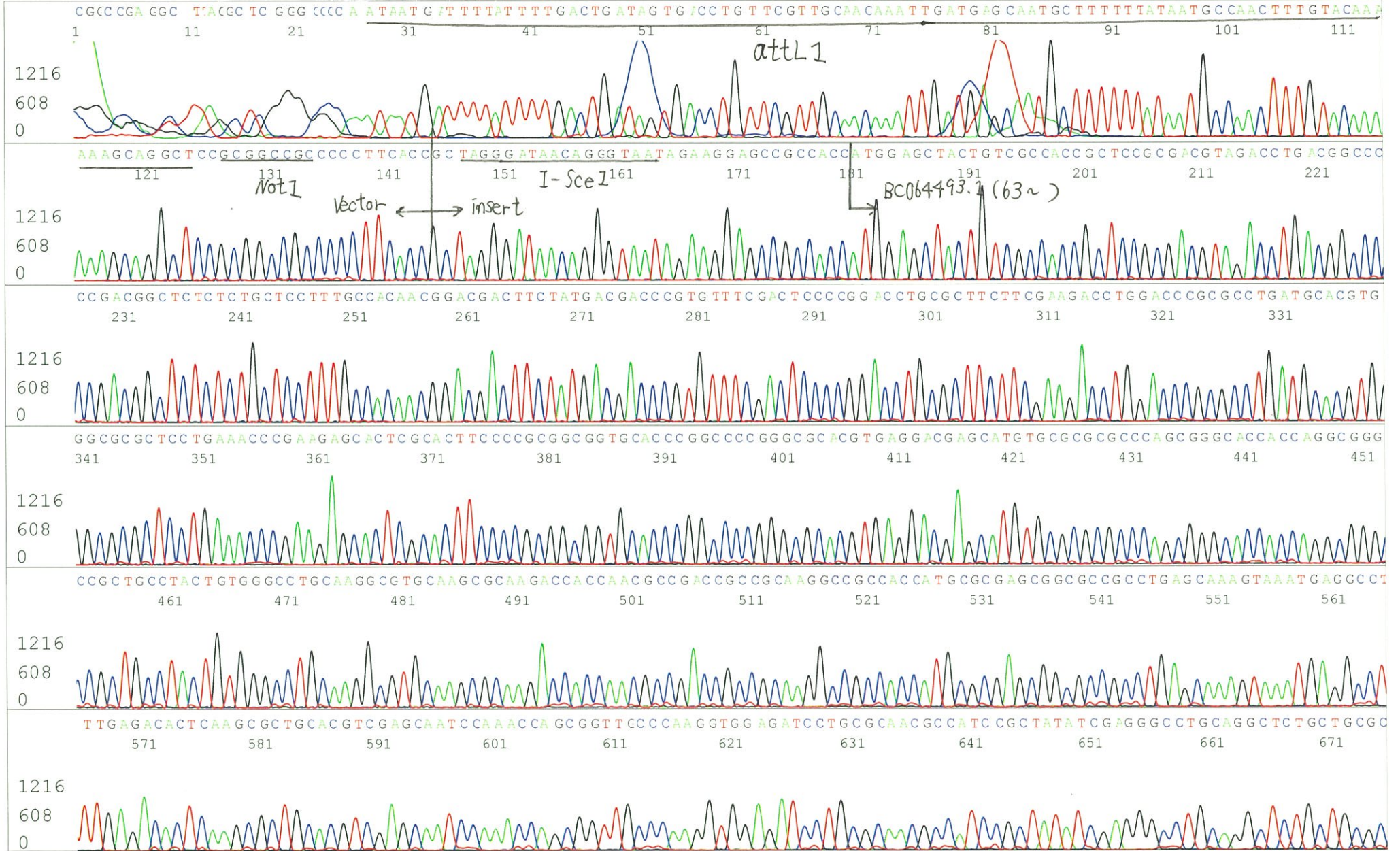
~~Conc. : 25 ng/ul, Volume : 40 ul~~



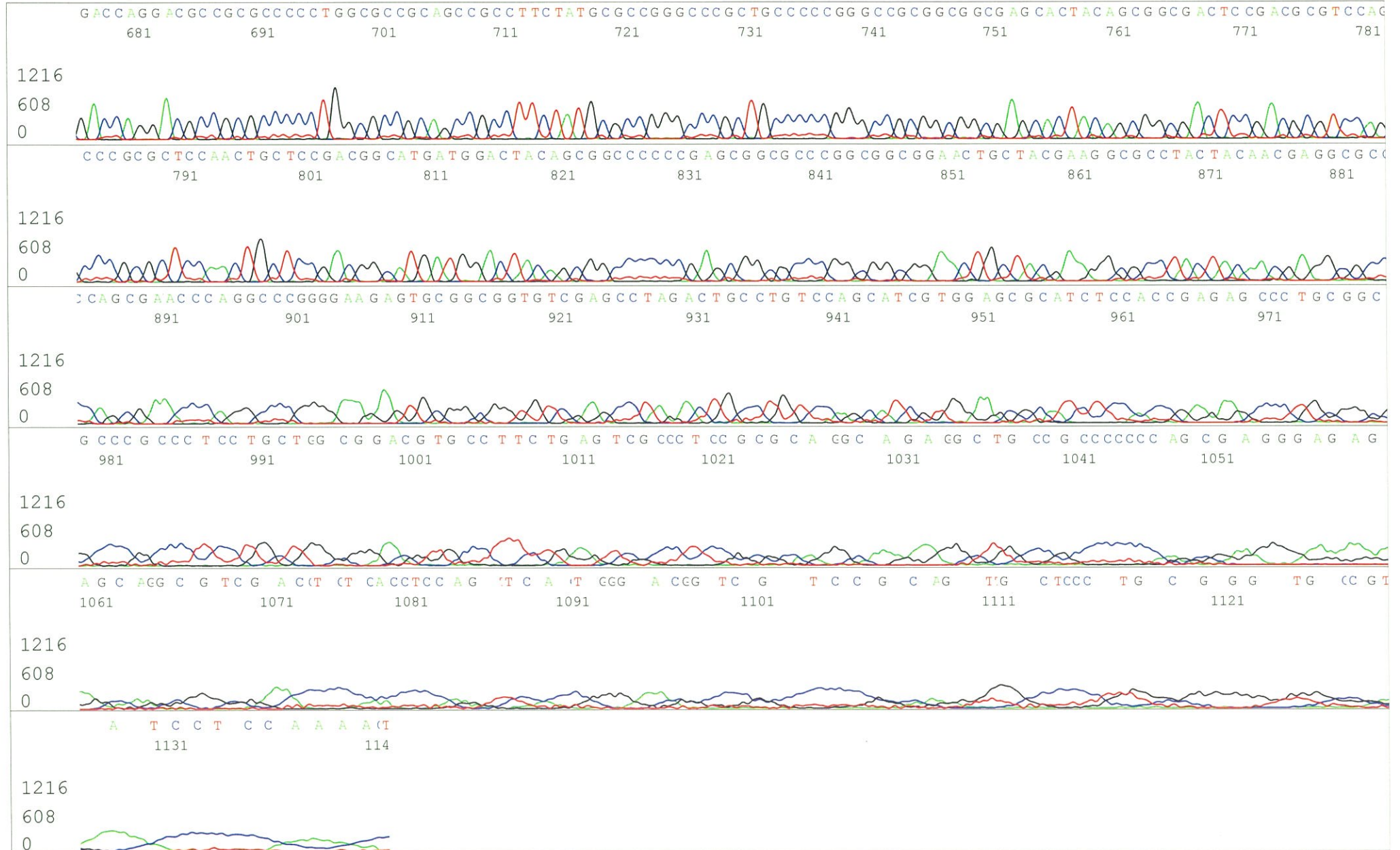
APPROVED BY : <http://dna.brc.riken.jp/index.html>

S/N G:51 A:45 T:32 C:59
KB.bcp
KB 1.4.1.8 Cap:8

Primer A : M13
5' GTTTCCAGTCACGACGTTGTA 3'



S/N G:51 A:45 T:32 C:59
KB.bcp
KB 1.4.1.8 Cap:8



S/N G:53 A:30 T:29 C:46
KB.bcp
KB 1.4.1.8 Cap:11

Primer B : T7 long

5' CGCCAAGCTCTAATACGACTCACTATAGGG 3'

