

**RIKEN Clone ID : W01A060A12**

Vector : pENTR-TOPO

Gene	AXL	
Accession ID of Origin	BC032229.1	3275 bp
	CDS	2685 bp

● Plasmid DNA purification

Date : 180802

Culture : LB (25 ug/ml Kanamycin) 5 ml -> at 37 deg C over night

Date : 180803

Purification : QIAGEN Miniprep kit -> dH<sub>2</sub>O 100 ul

● Digestion by restriction enzyme/Concentration calibration

Date : 180803

DNA concentration (O.D.): 170 ng/ul

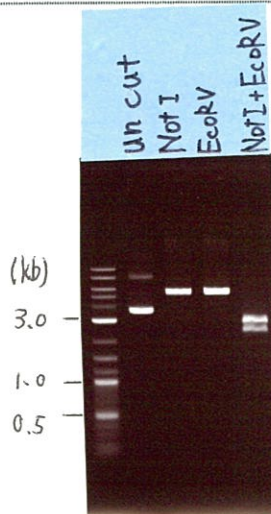
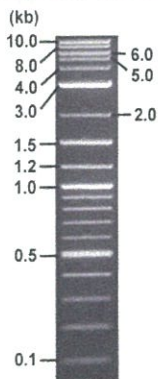
< Size of fragment expected from this clone >

DNA	<u>0.6</u> ul
Enzyme (NotI + EcoRV )	0.5 + 0.5 ul
Buffer H	1 ul
dH <sub>2</sub> O	<u>7.4</u> ul
Total	10 ul

NotI	5.4 kb
EcoRV	5.4 kb
NotI + EcoRV	2.5kb (Vector) 2.9 kb

Electrophoresis : 1% agarose gel, 1x TAE Buffer

Marker : 2-Log DNA Ladder (NEB#N3200L)



● Adjust plasmid DNA solution to 25 ng/ul

Date : 180809

DNA ( <u>170</u> ng/ul)	<u>87.0</u> ul
10x TE	<u>59.1</u> ul
dH <sub>2</sub> O	<u>445.5</u> ul
Total	<u>591.6</u> ul

● Confirmation of the insertion sequence

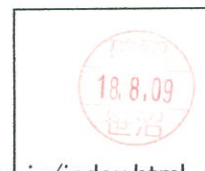
Date : 180807

Primer A	M13
Primer B	T7 long
Primer C	-
List of Sequencing Primers	<a href="http://dna.brc.riken.jp/en/GNPclone3en.html">http://dna.brc.riken.jp/en/GNPclone3en.html</a>

● Shipping

Conc. : 25 ng/ul, Volume : 40 ul

Conc. :      ng/ul, Volume :      ul



APPROVED BY : <http://dna.brc.riken.jp/index.html>

S/N G:85 A:77 T:68 C:134  
KB.bcp  
KB 1.4.1.8 Cap:1

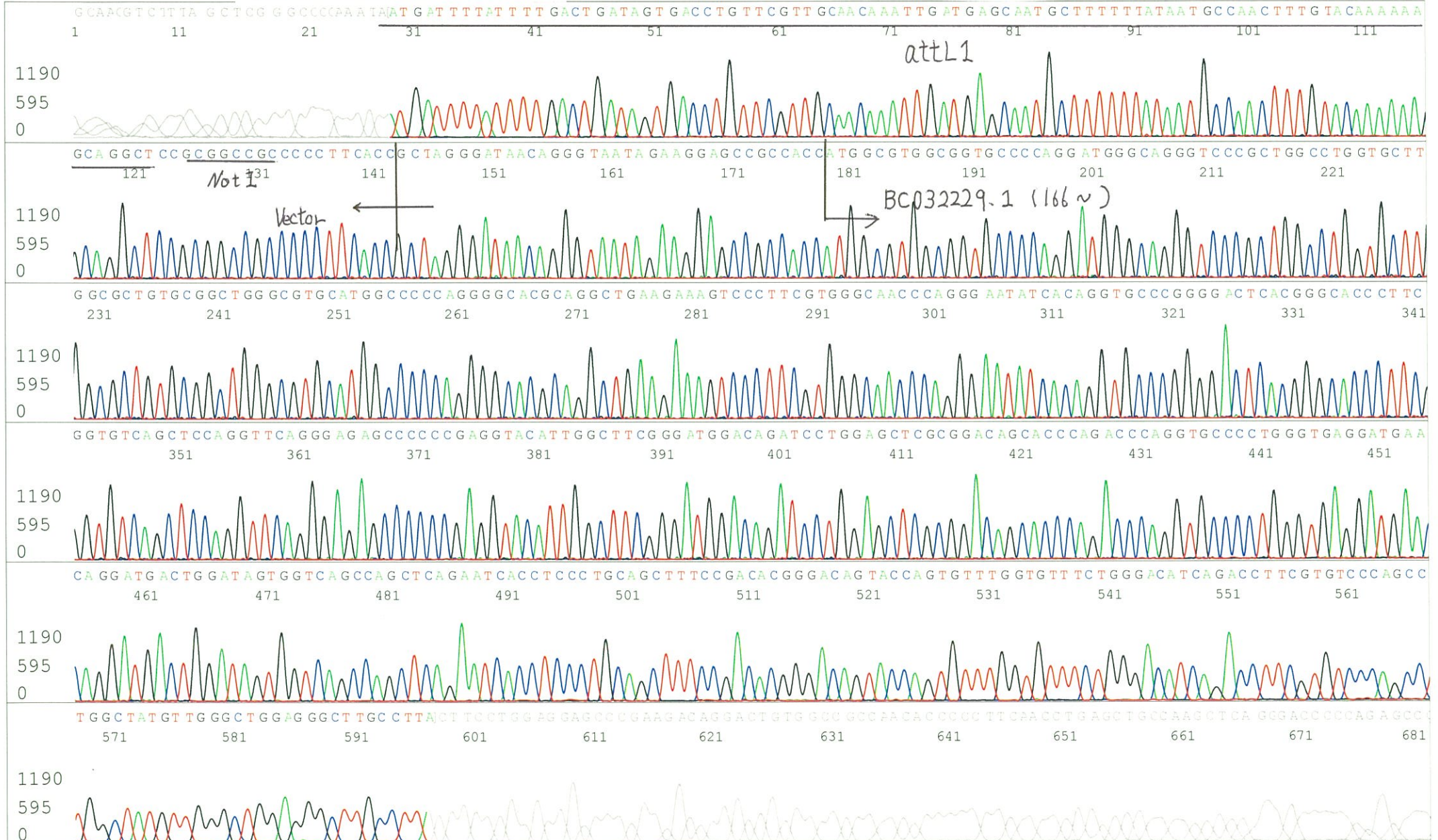
Primer A : M13

5' GTTTCCAGTCACGACGTTGTA 3'

W01A060A12\_A8H1\_M13\_A01\_01\_ABI08  
W01A060A12\_A8H1\_M13  
KB\_3500\_POP7\_BDTv3.mob  
Pts 1684 to 8704 Pk1 Loc:1652  
Version 6.0 HiSQV Bases: 711

Gray line indicates quality value  
(QV) < 40.

Inst Model/Name 3500/3500 Instrument  
Aug 07,2018 03:55PM, JST  
Aug 07,2018 04:10PM, JST  
Spacing:10.78 Pts/Panel1350  
Plate Name: 20180808\_GNP





S/N G:24 A:21 T:21 C:34  
KB.bcp  
KB 1.4.1.8 Cap:2

Primer B : T7 long

5' CGCCAAGCTCTAATACGACTCACTATAGGG 3'

Gray line indicates quality value  
(QV) < 40.

