

**RIKEN clone ID: W01A058004**

Vector : pENTR/D-TOPO

Gene	LGALS9		
Accession No.	AK126017.1	3011 bp	1..3011
	<i>CDS</i>	972 bp	1469..2440

●Plasmid DNA purification

Date : 10/10/12

Culture : LB (25 ug/ml Kanamycin) 3 ml →37°C O/N

Date : 10/10/13

Purification : QIAGEN Miniprep kit→dH<sub>2</sub>O 100 ul

●Digestion by restriction enzyme / Concentration calibration

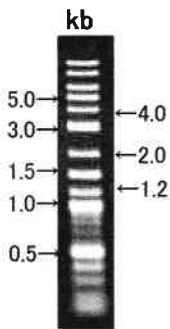
Date : 10/10/13

DNA concentration (O.D.): 81.1 ng/ul

DNA	1 ul
Restriction enzyme (NotI+BssH II)	0.5+0.5 ul
Buffer H	1 ul
dH <sub>2</sub> O	7 ul
<b>Total</b>	<b>10 ul</b>

Erectrophoresis: 1% agarose gel, 1 × TAE Buffer

Marker: 2-Log DNA Ladder (NEB#N3200L)



<Expected digestion pattern from AK126017.1 CDS>

2553, 1072 bp

●Adjust plasmid DNA solution to 25 ng/ul ~preparation for shipping~

Date : 10/10/14

Shipped : 25 ng/ul, 40 ul

Final concentration: 25 ng/ul

DNA ( <u>81.1</u> ng/ul)	<u>83</u> ul
10 × TE	<u>26.9</u> ul
dH <sub>2</sub> O	<u>159.3</u> ul
<b>Total</b>	<b>269.2</b> ul



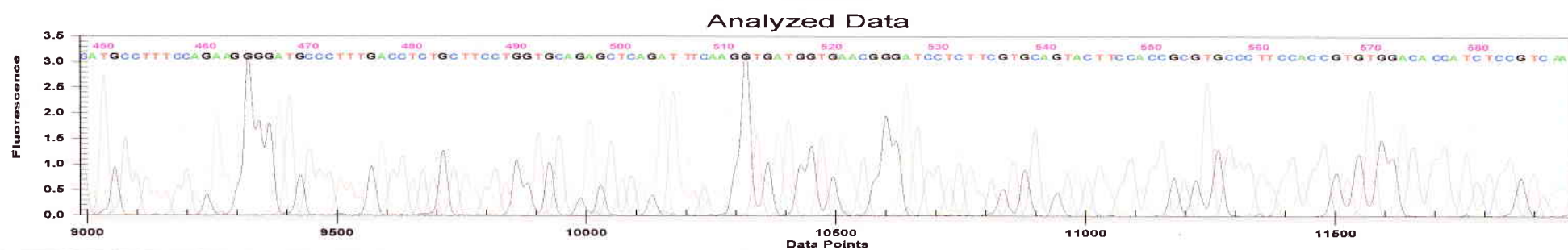
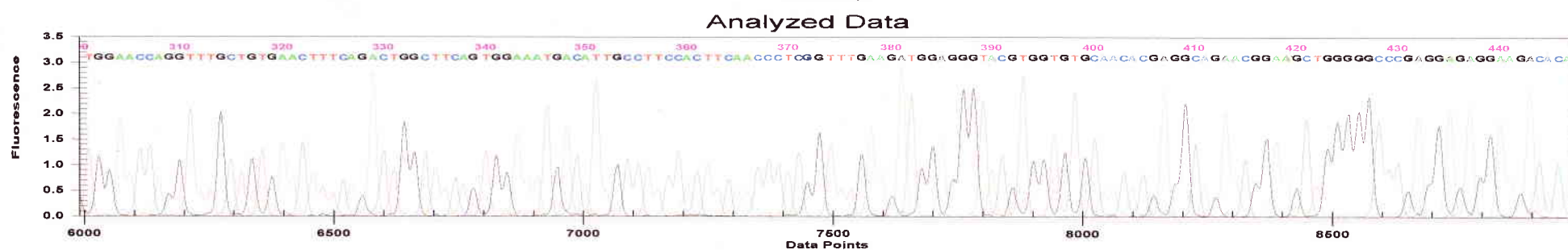
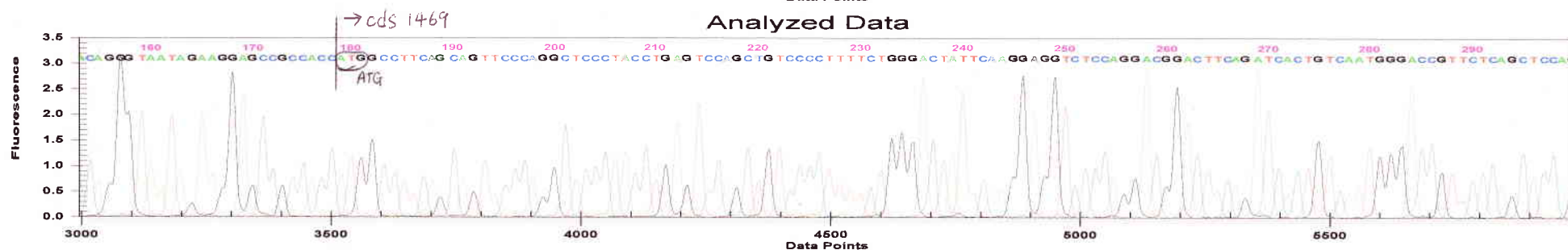
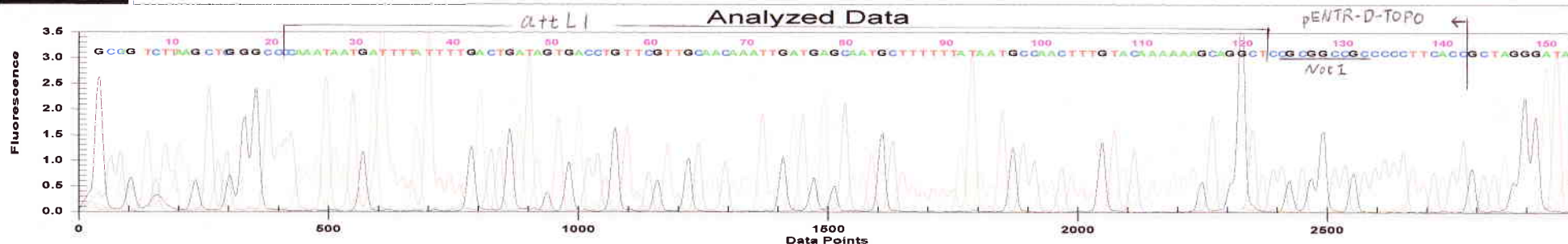
Project : GNP

Sample : W01A058O04\_M13.A09\_10101410K5

Result : W01A058O04\_M13.A09\_10101410K5

System : System 1

Operator : 1.101014.furu  
Instrument : System 1 (Ver. 9.0.25)

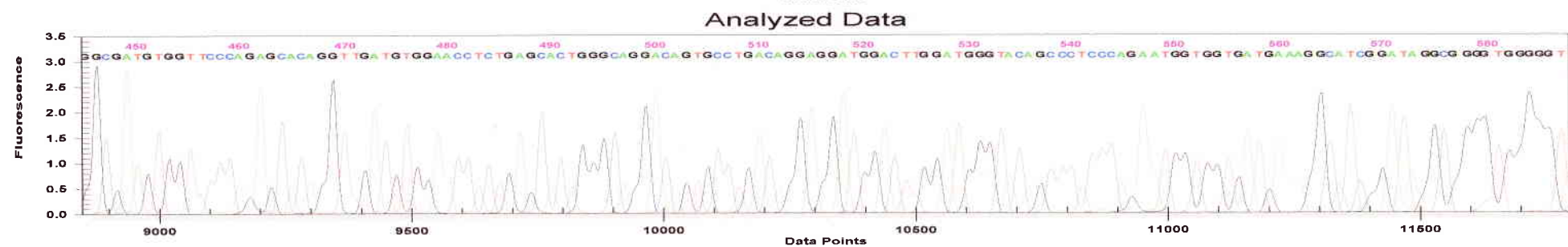
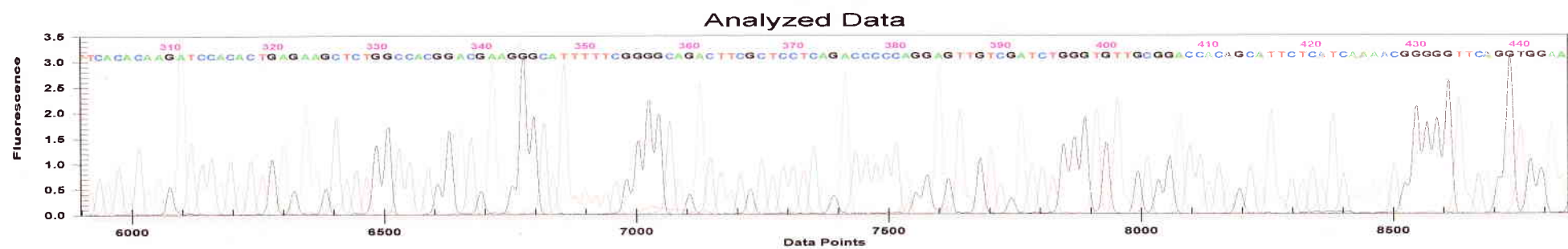
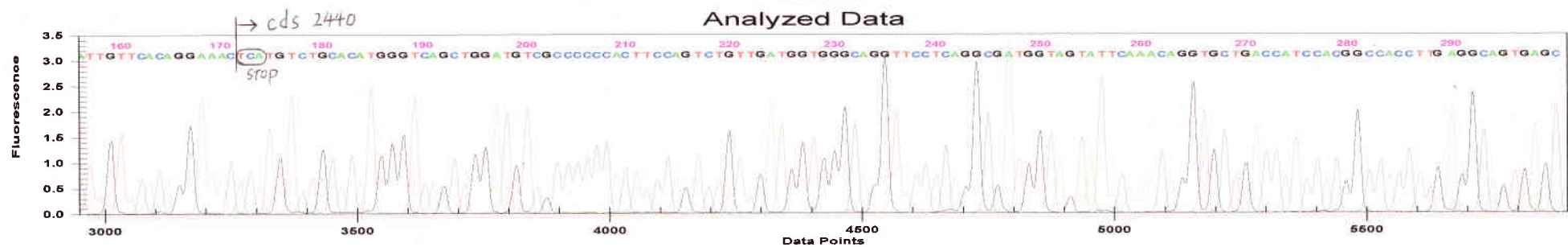
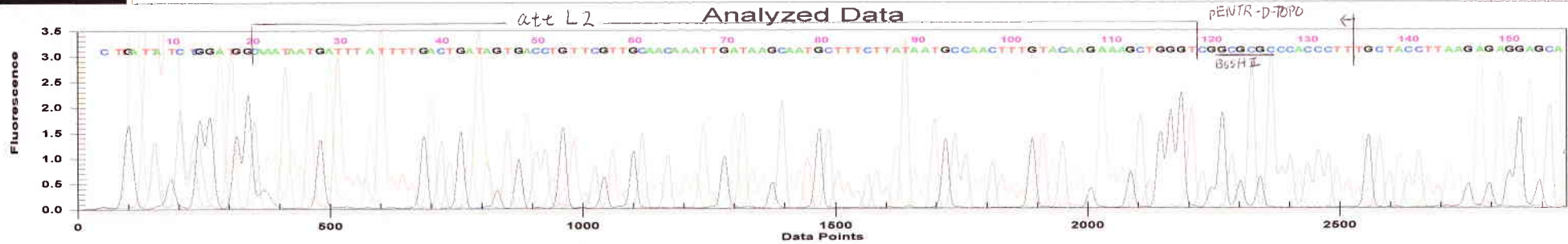




Project : GNP  
Sample : W01A058O04\_T7.B09\_10101410K5  
Result : W01A058O04\_T7.B09\_10101410K5

System : System 1

Operator : 1.101014.furu  
Instrument : System 1 (Ver. 9.0.25)



[ GENETYX : Nucleotide Sequence Homology Data ]

Date : 2010.10.14

1st Nucleotide Sequence

File Name : AK126017.1.gnu
Sequence Size : 972

2nd Nucleotide Sequence

File Name : W01A058004\_M13.A09\_10101410K5.fasta
Sequence Size : 603

Unit Size to Compare = 6
Pick up Location No. = 1

[ 426 / 426 bp] INT/OPT.Score : < 1704/ 1704 >

1469' ATG
121" TCCGCGCCG CCCCTTCAC CGTAGGGAT AACAGGGTAA TAGAAGGAGC GCACCACATG
1472' GCCTTCAGCA GTTCCAGGC TCCCTACCTG AGTCCAGCTG TCCCTTTTC TGGGACTATT
181" GCCTTCAGCA GTTCCAGGC TCCCTACCTG AGTCCAGCTG TCCCTTTTC TGGGACTATT
1532' CAAGGAGGTC TCCAGGACGG ACTTCAGATC ACTGTCAATG GGACCGTTCT CAGCTCCAGT
241" CAAGGAGGTC TCCAGGACGG ACTTCAGATC ACTGTCAATG GGACCGTTCT CAGCTCCAGT
1592' GGAACCAGGT TTGCTGTGAA CTTCAGACT GGCTTCAGTG GAAATGACAT TGCCTCCAC
301" GGAACCAGGT TTGCTGTGAA CTTCAGACT GGCTTCAGTG GAAATGACAT TGCCTCCAC
1652' TTCAACCCTC GGTTTGAAGA TGGAGGGTAC GTGGTGTGCA ACACGAGGCA GAACGGAAGC
361" TTCAACCCTC GGTTTGAAGA TGGAGGGTAC GTGGTGTGCA ACACGAGGCA GAACGGAAGC
1712' TGGGGGCCCG AGGAGAGGAA GACACACATG CCTTTCAGA AGGGGATGCC CTTTGACCTC
421" TGGGGGCCCG AGGAGAGGAA GACACACATG CCTTTCAGA AGGGGATGCC CTTTGACCTC
1772' TGCTTCTCGG TGCAGAGCTC AGATTTCAAG GTGATGGTGA ACGGGATCCT CTTCGTGCAG
481" TGCTTCTCGG TGCAGAGCTC AGATTTCAAG GTGATGGTGA ACGGGATCCT CTTCGTGCAG
1832' TACTTCCACC GCGTGCCCTT CCACCGTGTG GACACCATCT CCGTCAATGG CTCTGTGCAG
541" TACTTCCACC GCGTGCCCTT CCACCGTGTG GACACCATCT CCGTCAATGG CTCTGTGCAG
1892' CTGTCCTACA TCAGCTTCCA GCCTCCCGGC GTGTGGCCTG CCAACCCGGC TCCCATTACC
601" CTG

1st Nucleotide Sequence

File Name : AK126017.1.gnu
Sequence Size : 972

2nd Nucleotide Sequence

File Name : W01A058004\_T7.B09\_10101410K5.fasta (Complementary)
Sequence Size : 688

Unit Size to Compare = 6
Pick up Location No. = 1

[ 514 / 517 bp] INT/OPT.Score : < 2004/ 2040 >

1889' CAGCTGTCCT ACATCAGCTT CCAGCCTCCC GCGGTGTGGC CTGCCAACCC GGCTCCCATT
1" GTGTGGC CTGCC-ACCC GGCTTCCATT
1949' ACCCAGACAG TCATCCACAC AGTGCAGAGC GCCCCTGGAC AGATGTTCCT TACTCCC GCC
27" ACCCAGACAG TCATCCACAC AGTGCAGAGC GCCCCTGGAC AGATGTTCCT TACTCCC GCC
2009' ATCCCACCTA TGAATGATCC CCACCCCGCC TATCCGATGC CTTTCATCAC CACCATTCTG
87" ATCCCACCTA TGAATGATCC CCACCCCGCC TATCCGATGC CTTTCATCAC CACCATTCTG
2069' GGAGGGCTGT ACCCATCCAA GTCCATCCTC CTGTCAGGCA CTGTCCCTGCC CAGTGTCTAG
147" GGAGGGCTGT ACCCATCCAA GTCCATCCTC CTGTCAGGCA CTGTCCCTGCC CAGTGTCTAG
2129' AGGTTCCACA TCAACCTGTG CTCTGGGAAC CACATCGCCT TCCACCTGAA CCCCCTTTT
207" AGGTTCCACA TCAACCTGTG CTCTGGGAAC CACATCGCCT TCCACCTGAA CCCCCTTTT
2189' GATGAGAATG CTGTGGTCCG CAACACCCAG ATCGACAAC CCTGGGGGTC TGAGGAGCGA
267" GATGAGAATG CTGTGGTCCG CAACACCCAG ATCGACAAC CCTGGGGGTC TGAGGAGCGA
2249' AGTCTGCCCC GAAAAATGCC CTTCGTCGGT GGCCAGAGCT TCTCAGTGTG GATCTTGTGT
327" AGTCTGCCCC GAAAAATGCC CTTCGTCGGT GGCCAGAGCT TCTCAGTGTG GATCTTGTGT
2309' GAAGCTCACT GCCTCAAGGT GGCCGTGGAT GGTGAGCACC TGTTTGAATA CTACCATCGC
387" GAAGCTCACT GCCTCAAGGT GGCCGTGGAT GGTGAGCACC TGTTTGAATA CTACCATCGC
2369' CTGAGGAACC TGCCACCCAT CAACAGACTG GAAGTGGGGG GCGACATCCA GCTGACCCAT
447" CTGAGGAACC TGCCACCCAT CAACAGACTG GAAGTGGGGG GCGACATCCA GCTGACCCAT
2429' GTGCAGACAT AG
507" GTGCAGACAT GAGTTTCTG TGAACAATTG CTCCTCTCTT AAGGTAGCAA AGGGTGGGCG