

**RIKEN Clone ID : W01A052H03**

Vector : pENTR-TOPO

Gene	IL2	
Accession ID of Origin	BC066255.1	573 bp
	CDS	462 bp

● Plasmid DNA purification

Date : 20221003

Culture : LB (25 ug/ml Kanamycin) 5 ml -> at 37 deg C over night

Date : 20221004

Purification : QIAGEN Miniprep kit -> dH<sub>2</sub>O 100 ul

● Digestion by restriction enzyme/Concentration calibration

Date : 20221004

DNA concentration (O.D.): 131 ng/ul

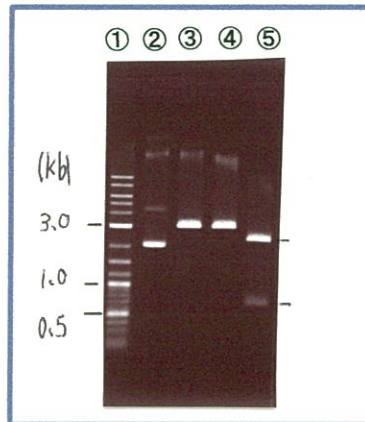
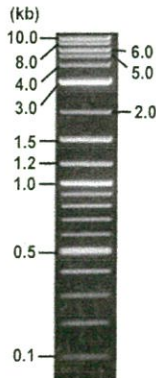
< Size of fragment expected from this clone >

DNA	<u>0.8</u> ul
Enzyme (NotI + EcoRV)	0.5 + 0.5 ul
Buffer H	1 ul
dH <sub>2</sub> O	<u>7.2</u> ul
Total	10 ul

NotI	3.2 kb
EcoRV	3.2 kb
NotI + EcoRV	2.5kb (Vector)      0.7 kb

Electrophoresis : 1% agarose gel, 1x TAE Buffer

Marker : 2-Log DNA Ladder (NEB#N3200L)



- ①:Marker
- ②:uncut
- ③:NotI
- ④:EcoRV
- ⑤:NotI+EcoRV

● Adjust plasmid DNA solution to 25 ng/ul

Date : 22.10.18

● Confirmation of the insertion sequence

Date : 20221011

DNA ( <u>131</u> ng/ul)	<u>78.0</u> ul
10x TE	<u>40.8</u> ul
dH <sub>2</sub> O	<u>289.9</u> ul
Total	<u>408.7</u> ul

Primer A	M13
Primer B	T7 long
Primer C	-
List of Sequencing Primers	<a href="http://dna.brc.riken.jp/en/GNPclone3en.html">http://dna.brc.riken.jp/en/GNPclone3en.html</a>

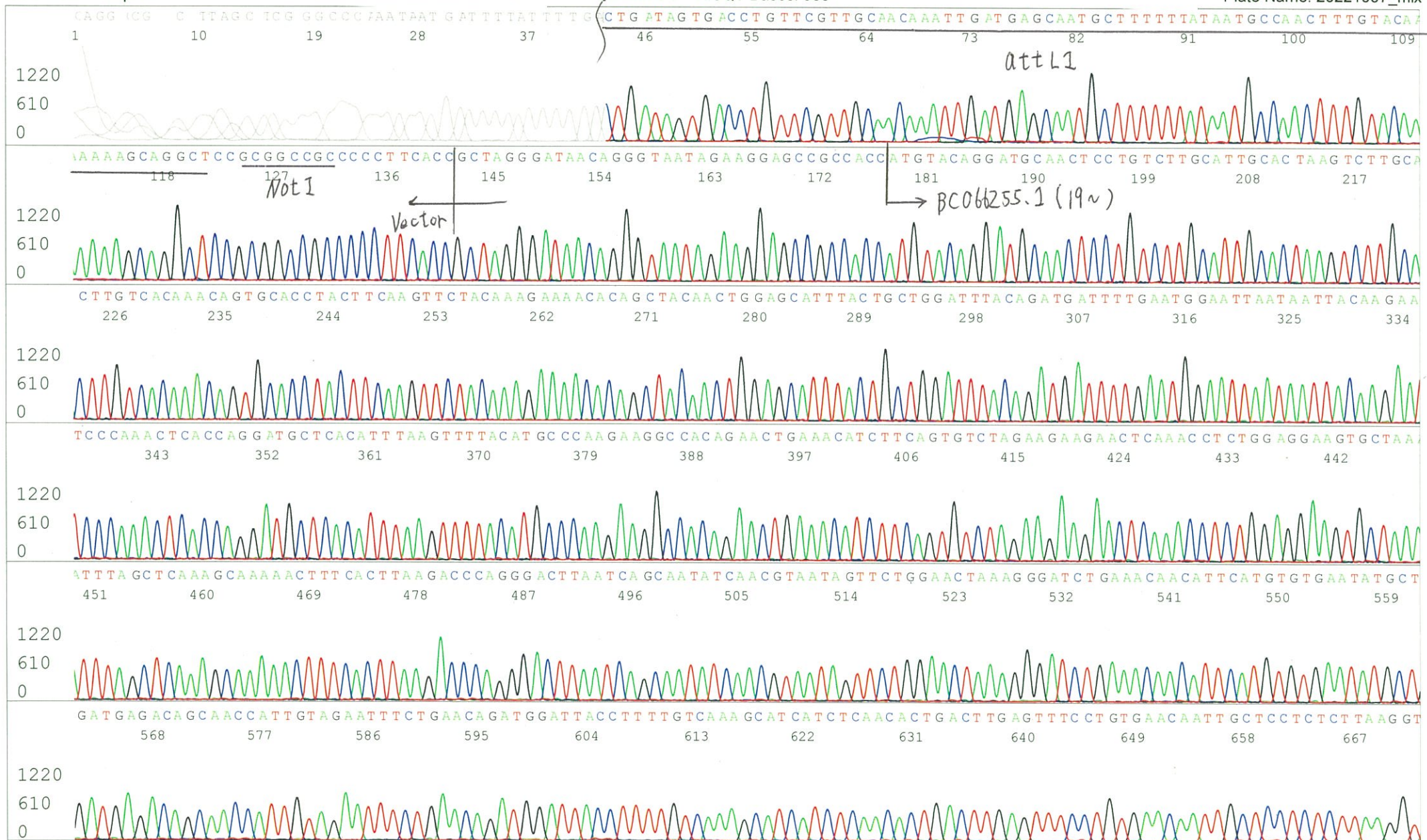
● Shipping

Conc. : 25 ng/μl, Volume : 40 μl

Conc. :      ng/μl, Volume :      μl



APPROVED BY : <http://dna.brc.riken.jp/index.html>



S/N G:174 A:228 T:178 C:166 Primer B : T7 long

8472\_W01A052H03\_B2lr\_T7long

Oct 07,2022 10:10AM, JST

KB.bcp

KB\_3500\_POP7\_BDTv3.mob

Gray line indicates quality value

Oct 07,2022 10:38AM, JST

KB 1.4.1.8 Cap:12

5' CGCCAAGCTCTAATACGACTCACTATAGGG 3'

Pts 1452 to 13543 Pk1 Loc:1429

(QV) < 40.

Spacing:12.06 Pts/Panel1350

Version 6.0 HiSQV Bases: 930

Plate Name: 20221007\_mix

