

**RIKEN Clone ID : W01A049D21**

Vector : pENTR-TOPO

Gene	CD2	
Accession ID of Origin	BC033583.1	1579 bp
	CDS	1056 bp

● Plasmid DNA purification

Date : 2022 1003

Culture : LB (25 ug/ml Kanamycin) 5 ml -> at 37 deg C over night

Date : 2022 1004

Purification : QIAGEN Miniprep kit -> dH<sub>2</sub>O 100 ul

● Digestion by restriction enzyme/Concentration calibration

Date : 2022 1004

DNA concentration (O.D.): 134.6 ng/ul

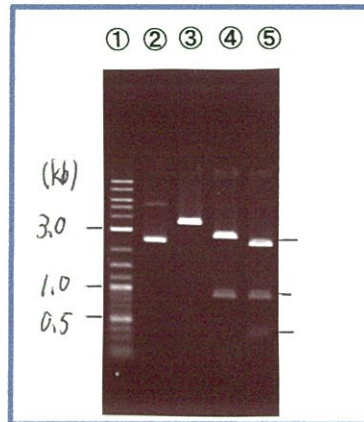
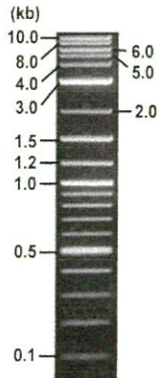
< Size of fragment expected from this clone >

DNA	<u>0.8 ul</u>
Enzyme (NotI + EcoRV)	<u>0.5 + 0.5 ul</u>
Buffer H	<u>1 ul</u>
dH <sub>2</sub> O	<u>7.2 ul</u>
Total	<u>10 ul</u>

NotI	3.8 kb
EcoRV	2.9, 0.9 kb
NotI + EcoRV	2.5kb (Vector)      0.9, 0.4 kb

Electrophoresis : 1% agarose gel, 1x TAE Buffer

Marker : 2-Log DNA Ladder (NEB#N3200L)



①:Marker  
②:uncut  
③:NotI  
④:EcoRV  
⑤:NotI+EcoRV

● Adjust plasmid DNA solution to 25 ng/ul

Date : 22.10.18

DNA ( <u>134 ng/ul</u> )	<u>80.0 ul</u>
10x TE	<u>42.8 ul</u>
dH <sub>2</sub> O	<u>306.0 ul</u>
Total	<u>428.8 ul</u>

● Confirmation of the insertion sequence

Date : 2022/10/11

Primer A	M13
Primer B	T7 long
Primer C	-
List of Sequencing Primers	<a href="http://dna.brc.riken.jp/en/GNPclone3en.html">http://dna.brc.riken.jp/en/GNPclone3en.html</a>

● Shipping

Conc. : 25 ng/ul, Volume : 40 ul

Conc. :     ng/ul, Volume :     ul



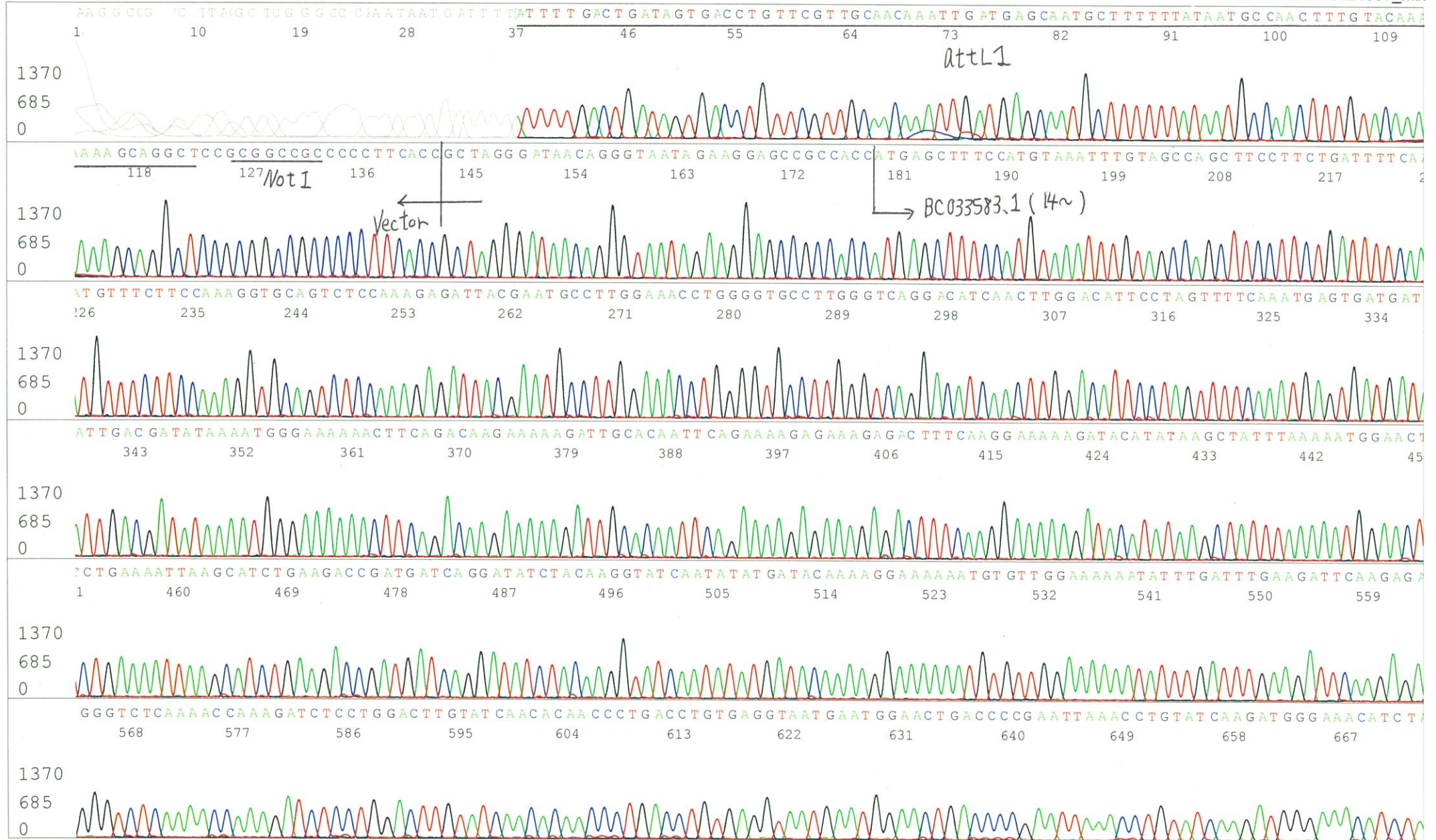
APPROVED BY : <http://dna.brc.riken.jp/index.html>

S/N G:172 A:336 T:174 C:205  
KB.bcp  
KB 1.4.1.8 Cap:8

Primer A : M13

5' GTTTTCCCAGTCACGACGTTGTA 3'

Gray line indicates quality value  
(QV) < 40.



S/N G:256 A:339 T:240 C:286 Primer B: T7 long

8472\_W01A049D21\_B2lr\_T7long

Oct 07,2022 10:10AM, JST

KB.bcp

KB\_3500\_POP7\_BDTV3.mob

Gray line indicates quality value

Oct 07,2022 10:38AM, JST

KB 1.4.1.8 Cap:9

5' CGCCAAGCTCTAATACGACTCACTATAGGG 3'

Pts 1454 to 13607 Pk1 Loc:1431

(QV) < 40.

Spacing:12.22 Pts/Panel1350

Plate Name: 20221007\_mix

