

**RIKEN Clone ID : W01A049B11**

Vector : pENTR/D-TOPO

Gene	KLF3		
Accession No.	BC030662.1	2873 bp	1..2873
	<i>CDS</i>	1038 bp	308..1345

● Plasmid DNA purification

Date : 130117

Culture : LB (25 ug/ml Kanamycin) 5 ml -> at 37 deg C over night

Date : 130123

Purification : QIAGEN Miniprep kit -> dH<sub>2</sub>O 100 ul

● Digestion by restriction enzyme/Concentration calibration

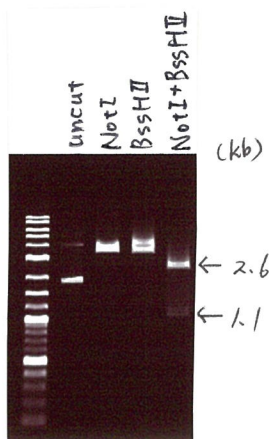
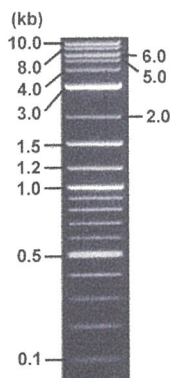
Date : 130123

DNA concentration (O.D.): 91 ng/ul

DNA	0.3	ul
Enzyme (NotI + BssHII)	0.5 + 0.5	ul
Buffer H	1	ul
dH <sub>2</sub> O	7.7	ul
Total	10	ul

Erectrophoresis : 1% agarose gel, 1x TAE Buffer

Marker : 2-Log DNA Ladder (NEB#N3200L)



<Expected size of fragment from BC030662.1 CDS>

.....2553, 1138 bp.....

● Confirmation of the insertion sequence

Date : 130125

Primer A	M13
Primer B	T7 long
Primer C	-
List of Sequencing Primers	<a href="http://dna.brc.riken.jp/en/GNPclone3en.html">http://dna.brc.riken.jp/en/GNPclone3en.html</a>

● Adjustment of DNA concentration

Shipping amount : 40 ul

Concentration at the time of preparation of plasmid DNA : 25 ng

Date : 130129

DNA ( <u>91</u> ng/ul)	85.0	ul
10x TE	30.9	ul
dH <sub>2</sub> O	193.5	ul
Total	309.4	ul



APPROVED BY :

<http://dna.brc.riken.jp/index.html>

