

**RIKEN Clone ID : W01A048C12**

Vector : pENTR-TOPO

Gene	IL5	
Accession ID of Origin	BC066282.1	459 bp
	CDS	405 bp

● Plasmid DNA purification

Date : 221003

Culture : LB (25 ug/ml Kanamycin) 5 ml -> at 37 deg C over night

Date : 221004

Purification : QIAGEN Miniprep kit -> dH<sub>2</sub>O 100 ul

● Digestion by restriction enzyme/Concentration calibration

Date : 221004

DNA concentration (O.D.): 122 ng/ul

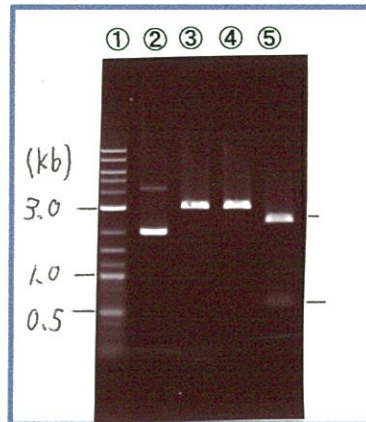
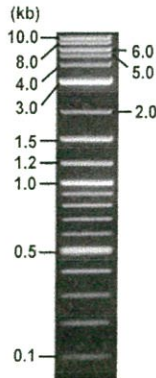
< Size of fragment expected from this clone >

DNA	<u>0.8</u> ul
Enzyme (NotI + EcoRV)	0.5 + 0.5 ul
Buffer H	1 ul
dH <sub>2</sub> O	<u>7.2</u> ul
Total	10 ul

NotI	3.1 kb
EcoRV	3.1 kb
NotI + EcoRV	2.5kb (Vector)                      0.6 kb

Electrophoresis : 1% agarose gel, 1x TAE Buffer

Marker : 2-Log DNA Ladder (NEB#N3200L)



①:Marker  
②:uncut  
③:NotI  
④:EcoRV  
⑤:NotI+EcoRV

● Adjust plasmid DNA solution to 25 ng/ul

Date : 22.10.18

DNA ( <u>122</u> ng/ul)	<u>82.0</u> ul
10x TE	<u>40.0</u> ul
dH <sub>2</sub> O	<u>278.1</u> ul
Total	<u>400.1</u> ul

● Confirmation of the insertion sequence

Date : 22/011

Primer A	M13
Primer B	T7 long
Primer C	-
List of Sequencing Primers	<a href="http://dna.brc.riken.jp/en/GNPclone3en.html">http://dna.brc.riken.jp/en/GNPclone3en.html</a>

● Shipping

Conc. : 25 ng/μl, Volume : 40 μl

Conc. :      ng/μl, Volume :      μl



S/N G:219 A:330 T:207 C:259

8472\_W01A048C12\_B2ir\_M13(-40)

Oct 06,2022 12:03PM, JST

KB.bcp

Primer A : M13

KB\_3500\_POP7\_BDTv3.mob

Oct 06,2022 12:31PM, JST

KB 1.4.1.8 Cap:12

5' GTTTCCCAGTCACGACGTTGTA 3'

Pts 1470 to 13590 Pk1 Loc:1447

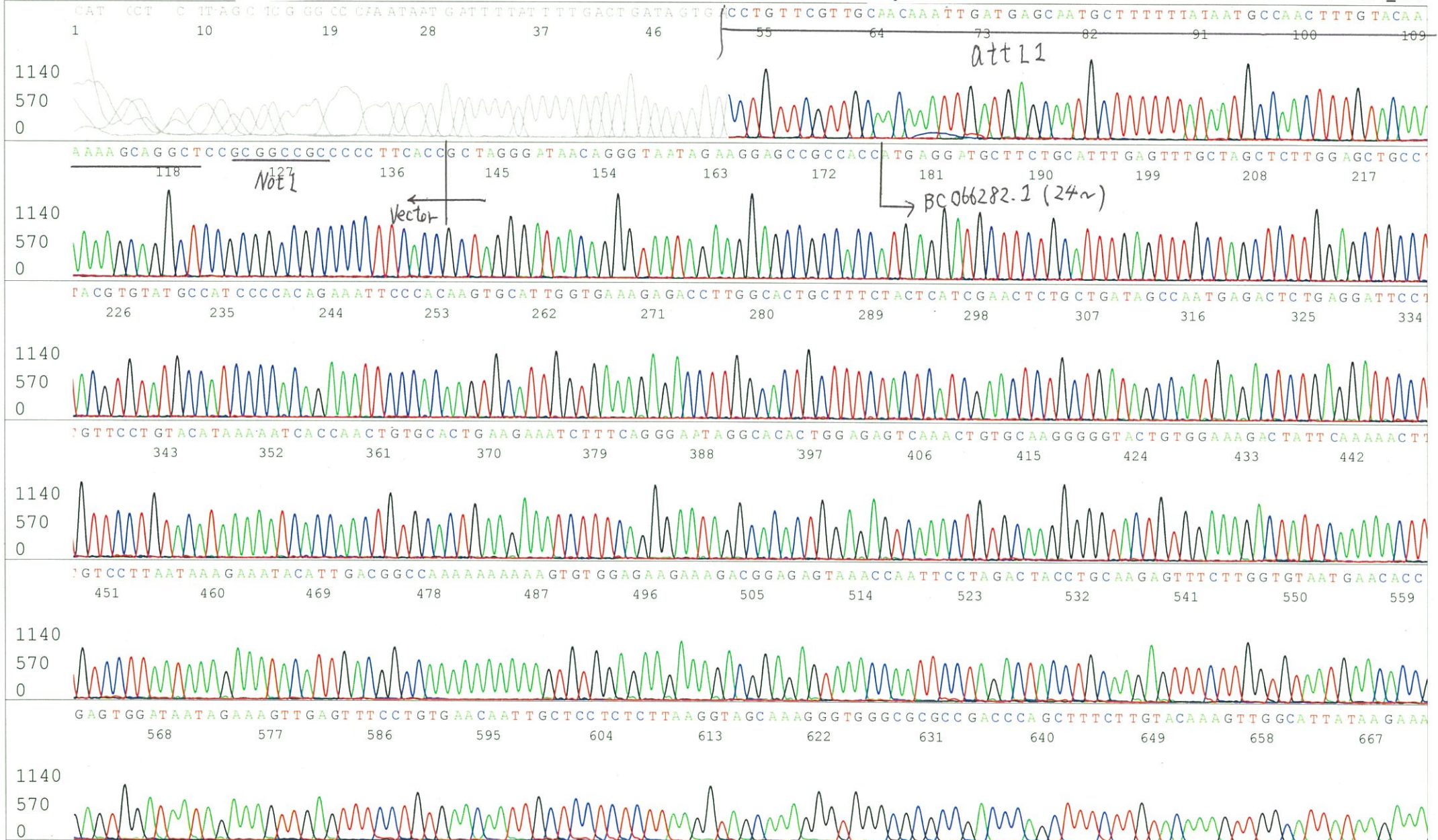
Gray line indicates quality value

Spacing:12.08 Pts/Panel1350

Version 6.0 HiSQV Bases: 929

(QV) < 40.

Plate Name: 20221006\_GNP



S/N G:144 A:174 T:141 C:15E Primer B : T7 long  
KB.bcp  
KB 1.4.1.8 Cap:19 5' CGCCAAGCTCTAATACGACTCACTATAGGG 3'

Gray line indicates quality value  
(QV) < 40.

