

RIKEN Clone ID : W01A046A23

Vector : pENTR-TOPO

Gene	SOX9	
Accession ID of Origin	BC007951.2	2214 bp
	CDS	1530 bp

● Plasmid DNA purification

Date : 180529

Culture : LB (25 ug/ml Kanamycin) 5 ml -> at 37 deg C over night

Date : 180530

Purification : QIAGEN Miniprep kit -> dH₂O 100 ul

● Digestion by restriction enzyme/Concentration calibration

Date : 180530

DNA concentration (O.D.): 117 ng/ul

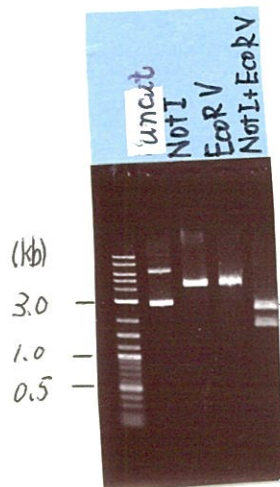
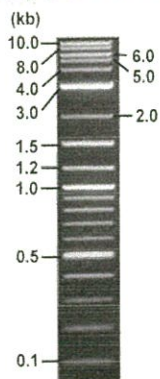
< Size of fragment expected from this clone >

DNA	<u>0.8</u> ul
Enzyme (NotI + EcoRV)	0.5 + 0.5 ul
Buffer H	1 ul
dH ₂ O	<u>7.2</u> ul
Total	10 ul

NotI	4.2 kb
EcoRV	4.2 kb
NotI + EcoRV	2.5kb (Vector) 1.7 kb

Electrophoresis : 1% agarose gel, 1x TAE Buffer

Marker : 2-Log DNA Ladder (NEB#N3200L)



● Adjust plasmid DNA solution to 25 ng/ul

Date : _____

DNA (<u>117</u> ng/ul)	<u>80.0</u> ul
10x TE	<u>37.4</u> ul
dH ₂ O	<u>257.0</u> ul
Total	<u>374.4</u> ul

● Confirmation of the insertion sequence

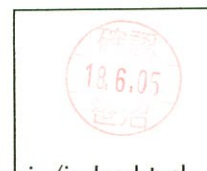
Date : 180604

Primer A	M13
Primer B	T7 long
Primer C	-
List of Sequencing Primers	http://dna.brc.riken.jp/en/GNPclone3en.html

● Shipping

Conc. : 25 ng/ul, Volume : 40 ul

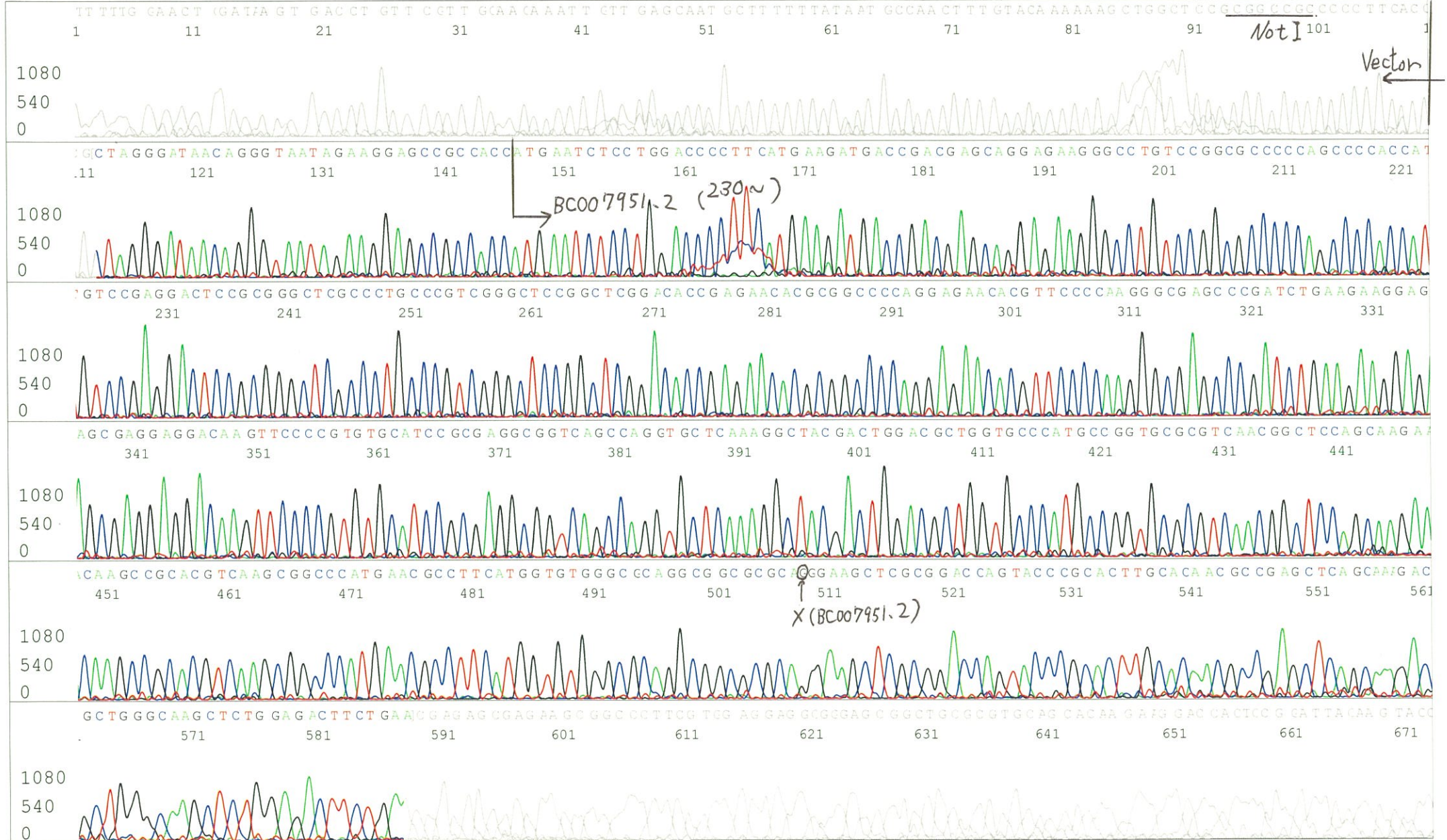
Conc. : ng/ul, Volume : ul



S/N G:9 A:10 T:7 C:13
KB.bcp
KB 1.4.1.8 Cap:1

Primer A : M13
5' GTTTTCCCAGTCACGACGTTGTGA 3'

Gray line indicates quality value
(QV) < 40.



S/N G:13 A:10 T:8 C:10
KB.bcp
KB 1.4.1.8 Cap:2

Primer B : T7 long

5' CGCCAAGCTCTAATACGACTCACTATAGGG 3'

Gray line indicates quality value
(QV) < 40.

