

RIKEN Clone ID : W01A042K10

Vector : pENTR-TOPO

| | | |
|------------------------|------------|---------|
| Gene | TEK | |
| Accession ID of Origin | BC035514.1 | 4500 bp |
| | <i>CDS</i> | 3375 bp |

● Plasmid DNA purification

Date : 15 12 24

Culture : LB (25 ug/ml Kanamycin) 5 ml -> at 37 deg C over night

Date : 15 12 25

Purification : QIAGEN Miniprep kit -> dH₂O 100 ul

● Digestion by restriction enzyme/Concentration calibration

Date : 15 12 25

DNA concentration (O.D.): 183 ng/ul

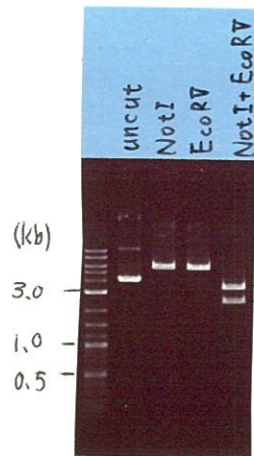
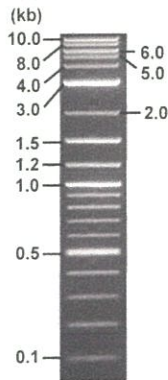
< Size of fragment expected from this clone >

| | | |
|------------------------|-----------|----|
| DNA | 0.5 | ul |
| Enzyme (NotI + EcoRV) | 0.5 + 0.5 | ul |
| Buffer H | 1 | ul |
| dH ₂ O | 7.5 | ul |
| Total | 10 | ul |

| | | |
|--------------|----------------|--------|
| NotI | 6.1 | kb |
| EcoRV | 6.1 | kb |
| NotI + EcoRV | 2.5kb (Vector) | 3.6 kb |

Erectrophoresis : 1% agarose gel, 1x TAE Buffer

Marker : 2-Log DNA Ladder (NEB#N3200L)



● Adjust plasmid DNA solution to 25 ng/ul

Date : 160106

| | | |
|-------------------|-------|----|
| DNA (183 ng/ul) | 83.0 | ul |
| 10x TE | 60.8 | ul |
| dH ₂ O | 463.8 | ul |
| Total | 607.6 | ul |

● Confirmation of the insertion sequence

Date : 160106

| | |
|----------------------------|---|
| Primer A | M13 |
| Primer B | T7 long |
| Primer C | - |
| List of Sequencing Primers | http://dna.brc.riken.jp/en/GNPclone3en.html |

● Shipping

Conc. : 25 ng/ul, Volume : 40 ul

~~Conc. : ng/ul, Volume : ul~~



APPROVED BY : <http://dna.brc.riken.jp/index.html>

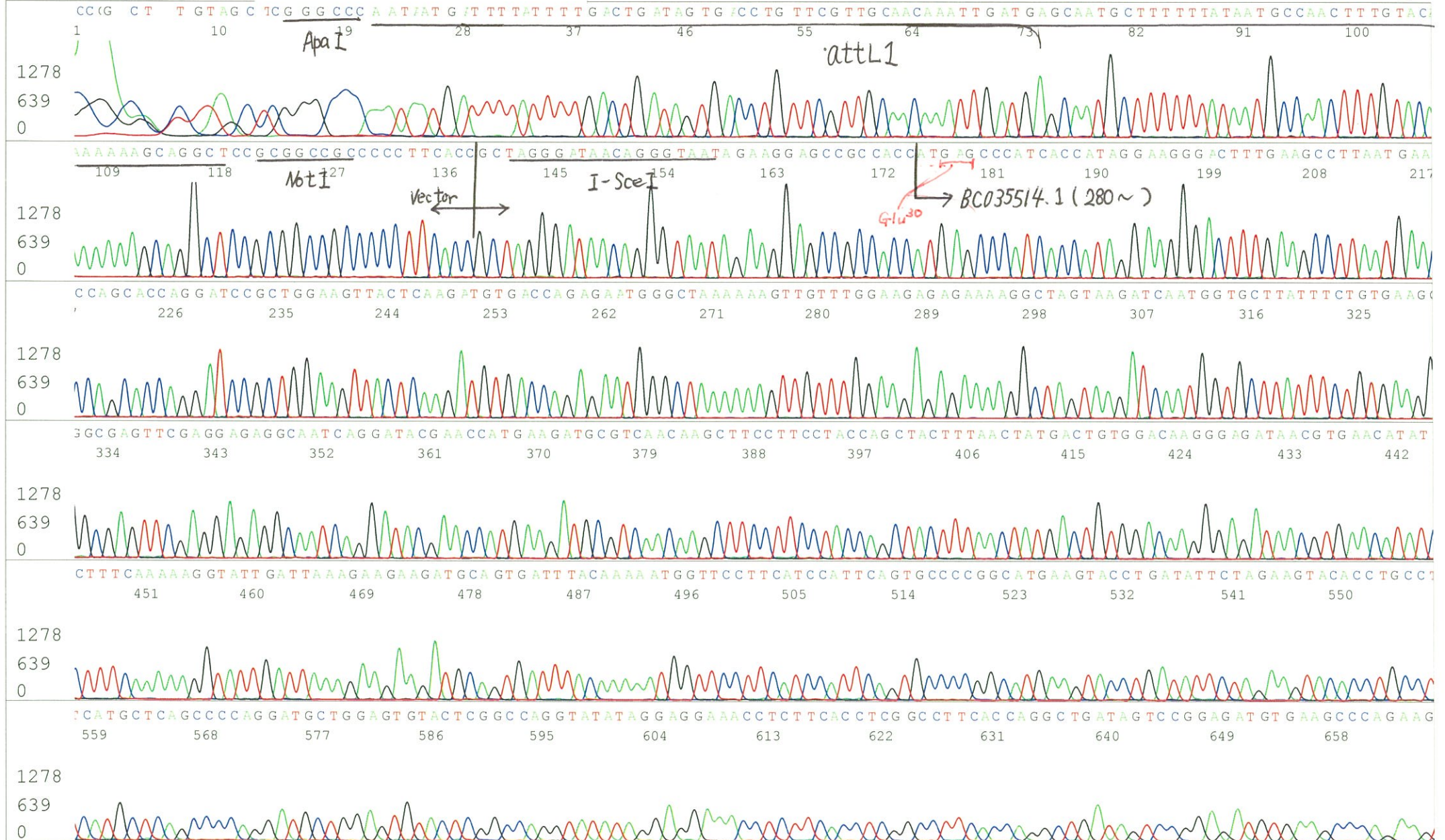
S/N G:405 A:389 T:409 C:353
KB.bcp
KB 1.4.1.8 Cap:7

Primer A : M13

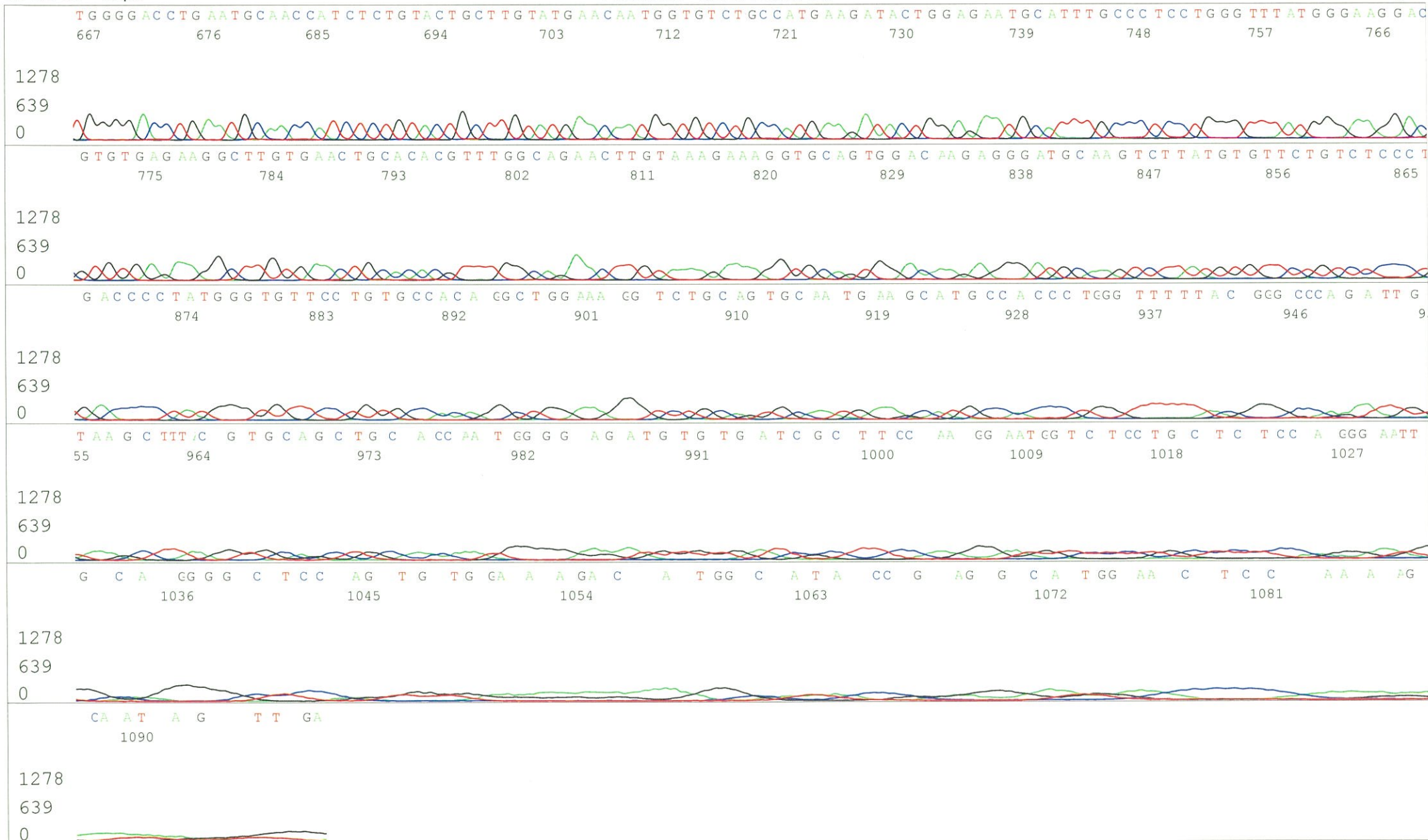
5' GTTTTCCCAGTCACGACGTTGTA 3'

W01A042K10_A5Li_M13(-40)_C01_07
W01A042K10_A5Li_M13(-40)
KB_3500_POP7_BDTv3.mob
Pts 1534 to 12499 Pk1 Loc:1511
Version 6.0 HiSQV Bases: 923

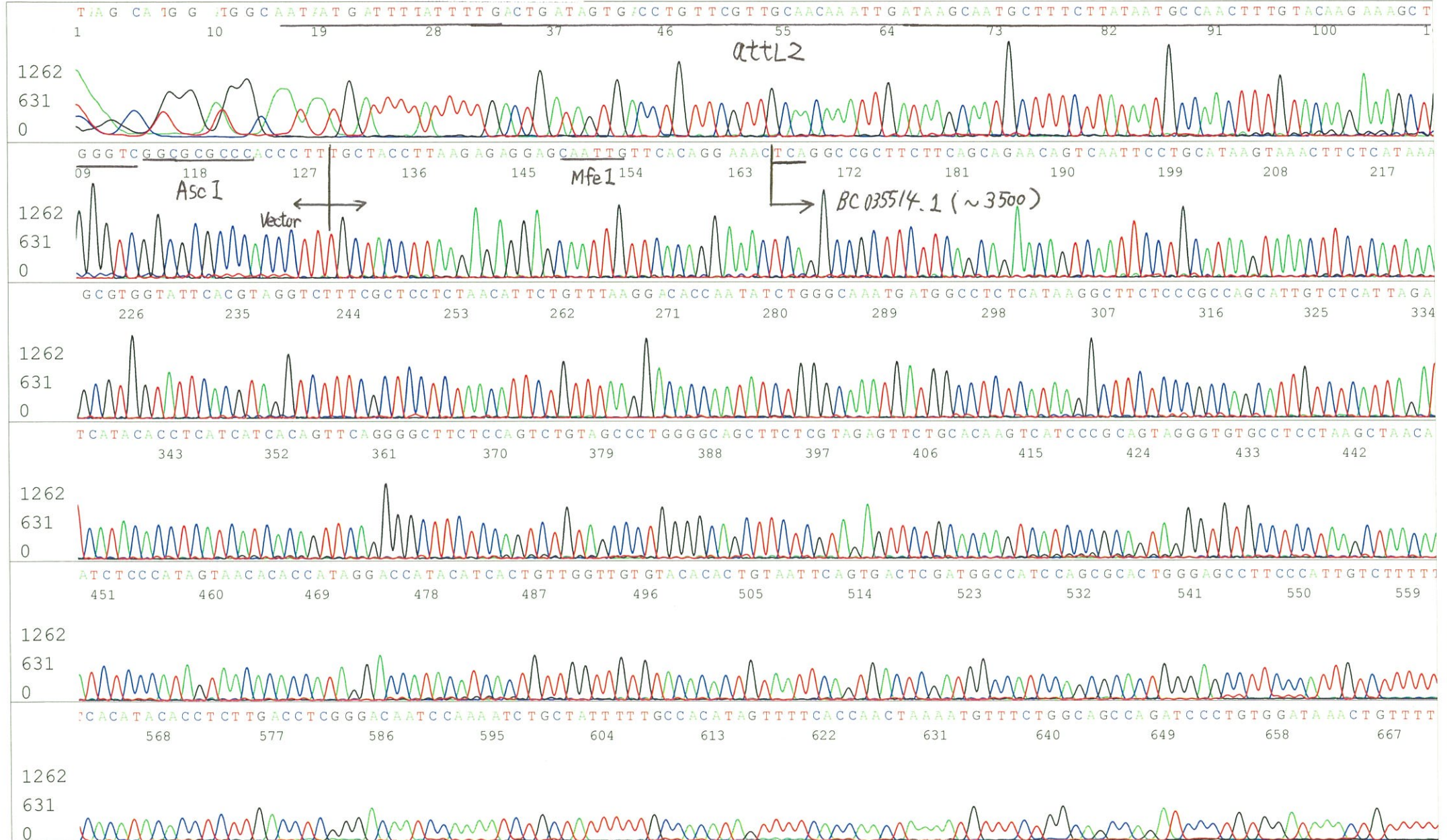
Inst Model/Name 3500/3500 Instrument
Jan 06,2016 02:06PM, JST
Jan 06,2016 02:32PM, JST
Spacing:10.99 Pts/Panel1350
Plate Name: 20160106_mix



S/N G:405 A:389 T:409 C:353
KB.bcp
KB 1.4.1.8 Cap:7



S/N G:410 A:350 T:539 C:458 Primer B : T7 long
KB.bcp
KB 1.4.1.8 Cap:10 5' CGCCAAGCTCTAATACGACTCACTATAGGG 3'



S/N G:410 A:350 T:539 C:458
KB.bcp
KB 1.4.1.8 Cap:10

