

**RIKEN Clone ID : W01A039J13**

Vector : pENTR-TOPO

Gene	PHACTR3	
Accession ID of Origin	AK091632.1	2372 bp
	CDS	1680 bp

● Plasmid DNA purification

Date : 180109

Culture : LB (25 ug/ml Kanamycin) 5 ml -> at 37 deg C over night

Date : 180110

Purification : QIAGEN Miniprep kit -> dH<sub>2</sub>O 100 ul

● Digestion by restriction enzyme/Concentration calibration

Date : 180110

DNA concentration (O.D.): 65 ng/ul

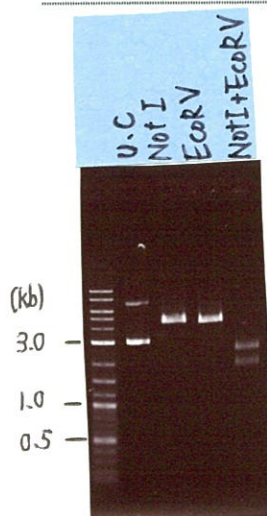
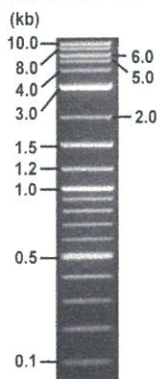
< Size of fragment expected from this clone >

DNA	1.5 ul
Enzyme (NotI + EcoRV )	0.5 + 0.5 ul
Buffer H	1 ul
dH <sub>2</sub> O	6.5 ul
Total	10 ul

NotI	4.4 kb
EcoRV	4.4 kb
NotI + EcoRV	2.5kb (Vector) 1.9 kb

Electrophoresis : 1% agarose gel, 1x TAE Buffer

Marker : 2-Log DNA Ladder (NEB#N3200L)



● Adjust plasmid DNA solution to 25 ng/ul

Date : 180116

● Confirmation of the insertion sequence

Date : 180116

DNA ( <u>65</u> ng/ul)	95.0 ul
10x TE	24.7 ul
dH <sub>2</sub> O	127.3 ul
Total	247.0 ul

Primer A	M13
Primer B	T7 long
Primer C	-
List of Sequencing Primers	<a href="http://dna.brc.riken.jp/en/GNPclone3en.html">http://dna.brc.riken.jp/en/GNPclone3en.html</a>

● Shipping

Conc. : 25 ng/ul, Volume : 40 ul

Conc. : ng/ul, Volume : ul

S/N G:254 A:312 T:204 C:454  
KB.bcp  
KB 1.4.1.8 Cap:19

Primer A: M13

W01A039J13\_A8A4\_M13  
KB\_3500\_POP7\_BDTv3.mob  
Pts 1716 to 8571 Pk1 Loc:1684  
Version 6.0 HiSQV Bases: 714

Gray line indicates quality value  
(QV) < 40.

Jan 12,2018 02:05PM, JST  
Jan 12,2018 02:32PM, JST  
Spacing:10.28 Pts/Panel1350  
Plate Name: 20180112-GNP

5' GTTTCCCAGTCACGACGTTGTA 3'

