

**RIKEN Clone ID : W01A037L23**

Vector : pENTR-TOPO

Gene	PSKH1	
Accession ID of Origin	BC062616.1	3506 bp
	<i>GDS</i>	1275 bp

● Plasmid DNA purification

Date : 161031

Culture : LB (25 ug/ml Kanamycin) 5 ml → at 37 deg C over night

Date : 161101

Purification : QIAGEN Miniprep kit → dH<sub>2</sub>O 100 ul

● Digestion by restriction enzyme/Concentration calibration

Date : 161101

DNA concentration (O.D.): 189 ng/ul

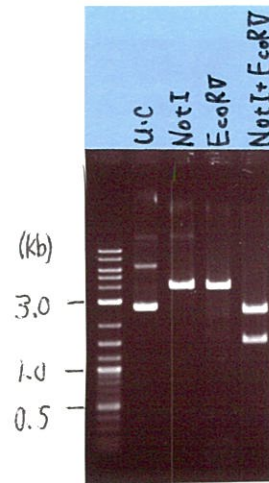
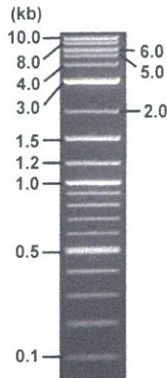
< Size of fragment expected from this clone >

DNA	0.5	ul
Enzyme (NotI + EcoRV )	0.5 + 0.5	ul
Buffer H	1	ul
dH <sub>2</sub> O	7.5	ul
Total	10	ul

NotI	4.0	kb
EcoRV	4.0	kb
NotI + EcoRV	2.5kb (Vector)	1.5 kb

Electrophoresis : 1% agarose gel, 1x TAE Buffer

Marker : 2-Log DNA Ladder (NEB#N3200L)



● Adjust plasmid DNA solution to 25 ng/ul

Date : 161104

● Confirmation of the insertion sequence

Date : 161102

DNA ( <u>189</u> ng/ul)	85.0	ul
10x TE	67.3	ul
dH <sub>2</sub> O	493.3	ul
Total	642.6	ul

Primer A	M13
Primer B	T7 long
Primer C	-
List of Sequencing Primers	<a href="http://dna.brc.riken.jp/en/GNPclone3en.html">http://dna.brc.riken.jp/en/GNPclone3en.html</a>

● Shipping

Conc. : 25 ng/μl, Volume : 40 μl

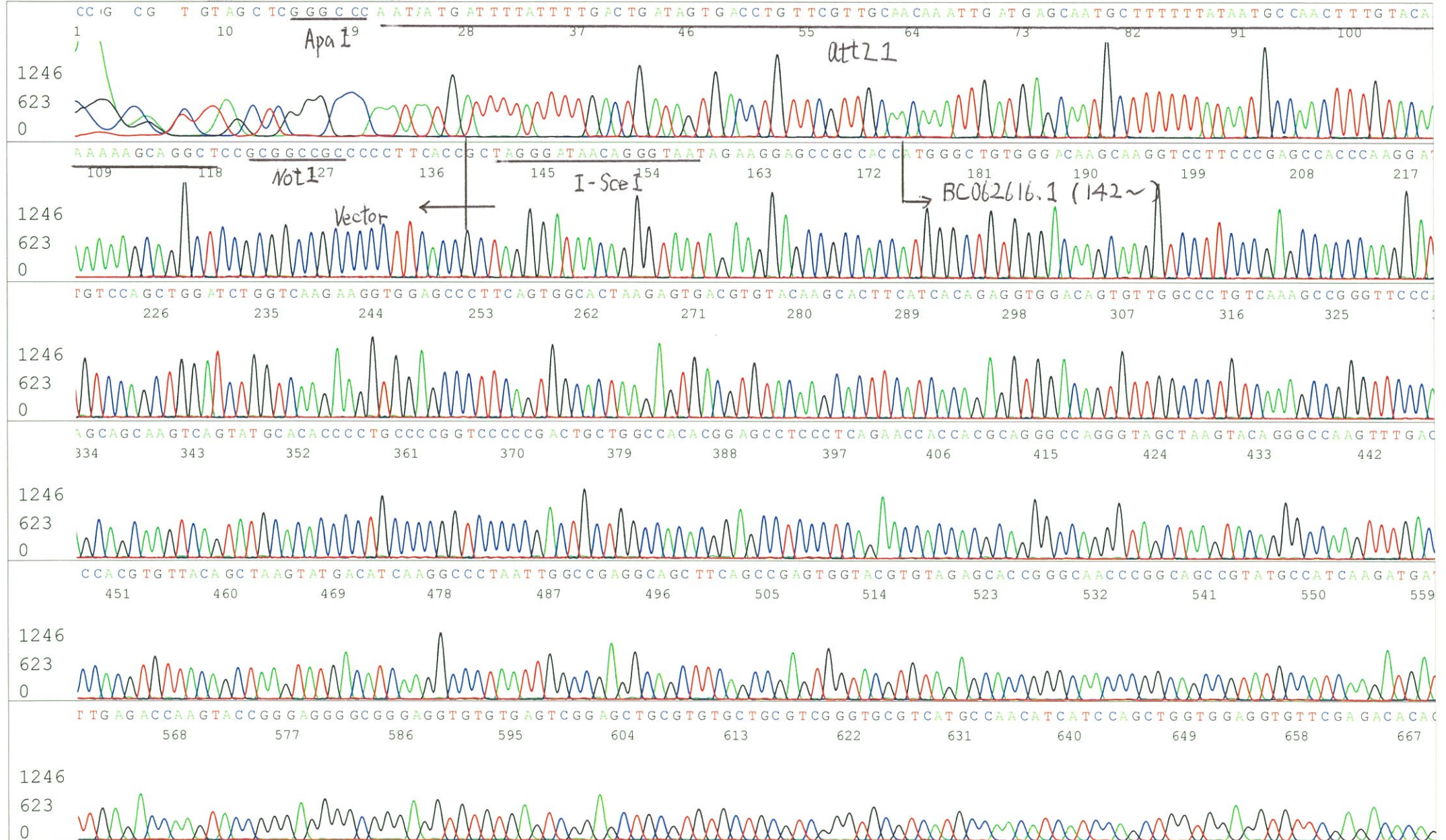
Conc. :      ng/μl, Volume :      μl



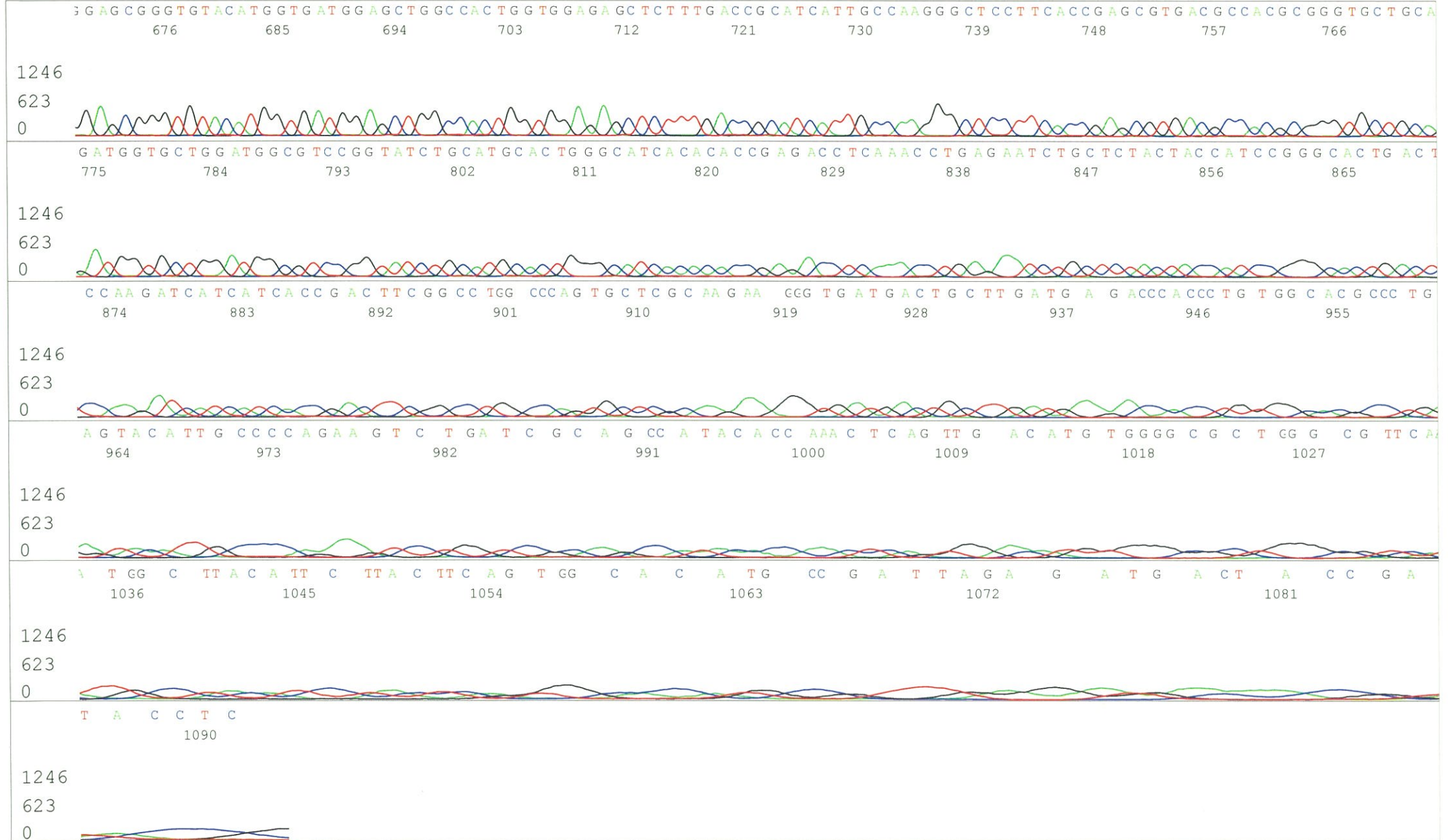
APPROVED BY : <http://dna.brc.riken.jp/index.html>

S/N G:737 A:590 T:596 C:7  
KB.bcp  
KB 1.4.1.8 Cap:19

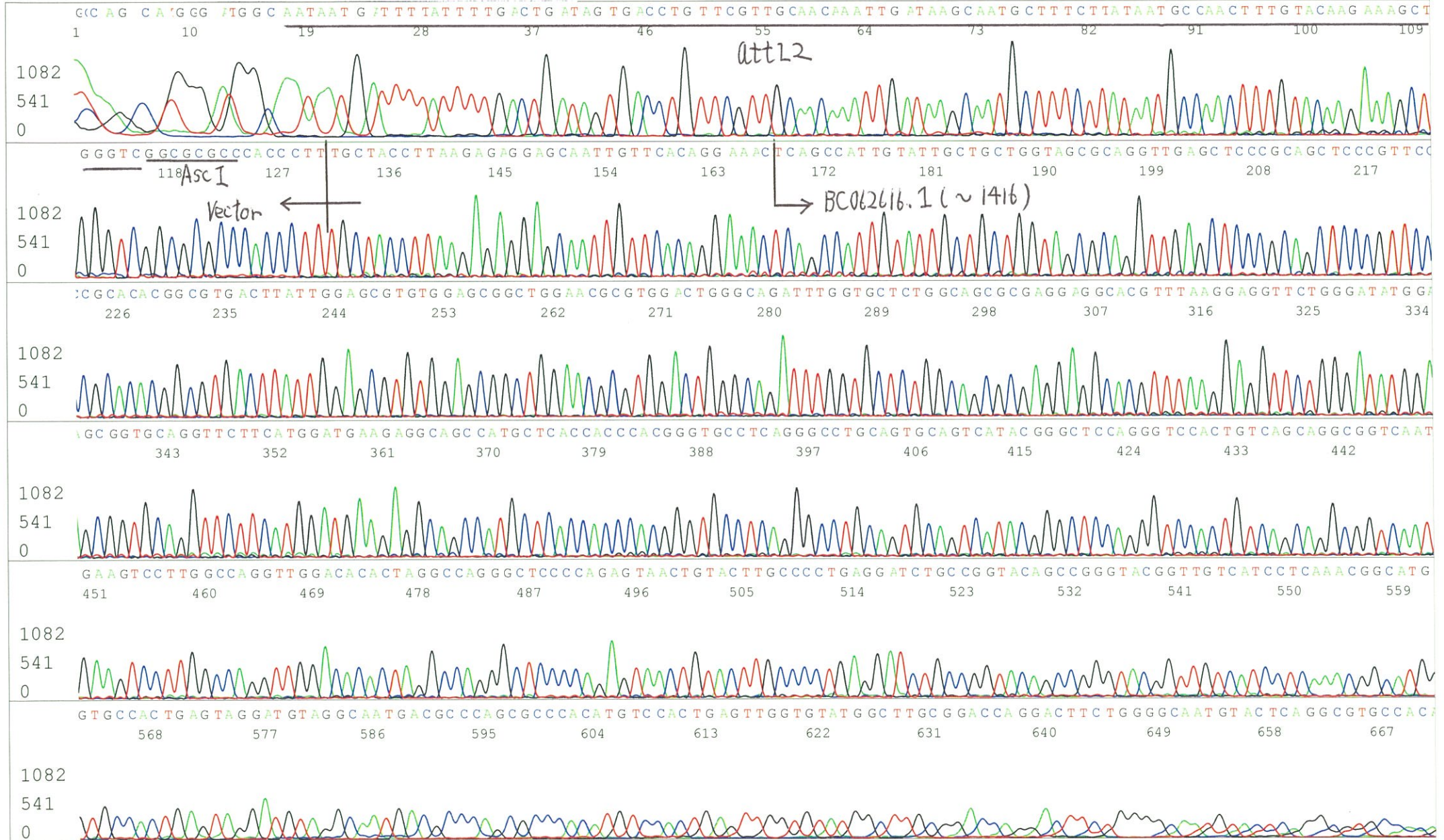
Primer A : M13  
5' GTTTTCCCAGTCACGACGTTGTA 3'



S/N G:737 A:590 T:596 C:790  
KB.bcp  
KB 1.4.1.8 Cap:19



S/N G:327 A:269 T:319 C:350 Primer B : T7 long  
KB.bcp  
KB 1.4.1.8 Cap:22 5' CGCCAAGCTCTAATACGACTCACTATAGGG 3'



S/N G:327 A:269 T:319 C:350  
KB.bcp  
KB 1.4.1.8 Cap:22

