

RIKEN Clone ID : W01A033N09

Vector : pENTR-TOPO

Gene	CD3D	
Accession ID of Origin	BC070321.1	771 bp
	CDS	516 bp

● Plasmid DNA purification

Date : 221004

Culture : LB (25 ug/ml Kanamycin) 5 ml -> at 37 deg C over night

Date : 221004

Purification : QIAGEN Miniprep kit -> dH₂O 100 ul

● Digestion by restriction enzyme/Concentration calibration

Date : 221004

DNA concentration (O.D.): 118 ng/ul

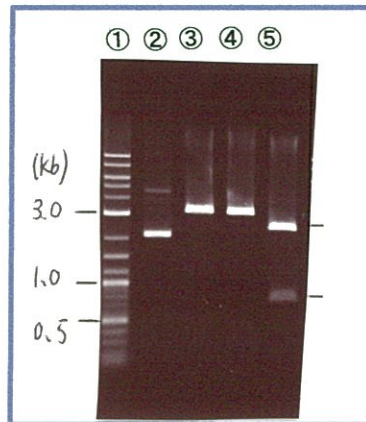
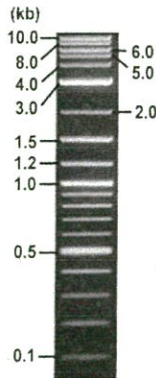
< Size of fragment expected from this clone >

DNA	<u>0.85</u> ul
Enzyme (NotI + EcoRV)	0.5 + 0.5 ul
Buffer H	1 ul
dH ₂ O	<u>2.15</u> ul
Total	10 ul

NotI	3.2 kb
EcoRV	3.2 kb
NotI + EcoRV	2.5kb (Vector) 0.7 kb

Electrophoresis : 1% agarose gel, 1x TAE Buffer

Marker : 2-Log DNA Ladder (NEB#N3200L)



①:Marker
②:uncut
③:NotI
④:EcoRV
⑤:NotI+EcoRV

● Adjust plasmid DNA solution to 25 ng/ul

Date : 22.10.18

DNA (<u>118</u> ng/ul)	<u>82.0</u> ul
10x TE	<u>38.7</u> ul
dH ₂ O	<u>266.3</u> ul
Total	<u>387.0</u> ul

● Confirmation of the insertion sequence

Date : 22/011

Primer A	M13
Primer B	T7 long
Primer C	-
List of Sequencing Primers	http://dna.brc.riken.jp/en/GNPclone3en.html

● Shipping

Conc. : 25 ng/μl, Volume : 40 μl

Conc. : ng/μl, Volume : μl



S/N G:211 A:271 T:178 C:244 Primer B : T7 long

8472_W01A033N09_B2ir_T7long

Oct 06,2022 12:03PM, JST

KB.bcp

KB_3500_POP7_BDTv3.mob

Gray line indicates quality value

Oct 06,2022 12:31PM, JST

KB 1.4.1.8 Cap:15

5' CGCCAAGCTCTAATACGACTCACTATAGGG 3'

Pts 1458 to 13608 Pk1 Loc:1435

(QV) < 40.

Spacing:12.14 Pts/Panel1350

Plate Name: 20221006_GNP

