

RIKEN Clone ID : W01A033A12

Vector : pENTR-TOPO

Gene	RPS27A	
Accession ID of Origin	BC001392.2	544 bp
	CDS	471 bp

● Plasmid DNA purification

Date : 221003

Culture : LB (25 ug/ml Kanamycin) 5 ml -> at 37 deg C over night

Date : 221004

Purification : QIAGEN Miniprep kit -> dH₂O 100 ul

● Digestion by restriction enzyme/Concentration calibration

Date : 221004

DNA concentration (O.D.): 110 ng/ul

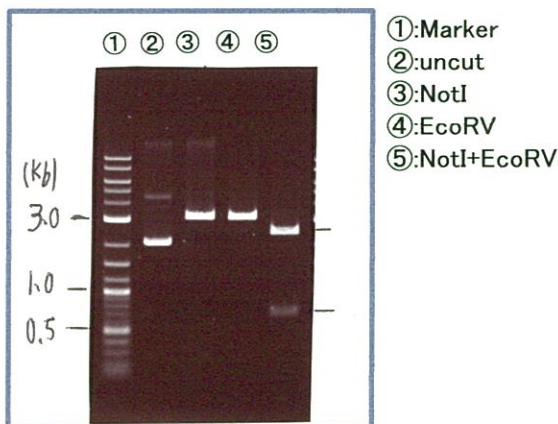
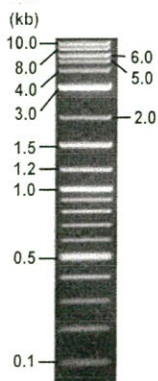
< Size of fragment expected from this clone >

DNA	<u>0.9</u> ul
Enzyme (NotI + EcoRV)	0.5 + 0.5 ul
Buffer H	1 ul
dH ₂ O	<u>2.1</u> ul
Total	10 ul

NotI	3.2 kb
EcoRV	3.2 kb
NotI + EcoRV	2.5kb (Vector) 0.7 kb

Erectrophoresis : 1% agarose gel, 1x TAE Buffer

Marker : 2-Log DNA Ladder (NEB#N3200L)



● Adjust plasmid DNA solution to 25 ng/ul

Date : 22.10.18

DNA (<u>110</u> ng/ul)	<u>80.0</u> ul
10x TE	<u>35.2</u> ul
dH ₂ O	<u>236.8</u> ul
Total	<u>352.0</u> ul

● Confirmation of the insertion sequence

Date : 221007

Primer A	M13
Primer B	T7 long
Primer C	-
List of Sequencing Primers	http://dna.brc.riken.jp/en/GNPclone3en.html

● Shipping

Conc. : 25 ng/ul, Volume : 40 ul

Conc. : ng/ul, Volume : ul



S/N G:176 A:300 T:167 C:243
KB.bcp
KB 1.4.1.8 Cap:16

Primer A : M13

5' GTTTTCCCAGTCACGACGTTGTA 3'

8472_W01A033A12_B2ir_M13(-40)_F01_16_ABI24
8472_W01A033A12_B2ir_M13(-40)
KB_3500_POP7_BDTv3.mob
Pts 1442 to 13642 Pk1 Loc:1419
Version 6.0 HiSQV Bases: 944 (QV) < 40.

Inst Model/Name 3500/3500 Instrument
Oct 06,2022 12:03PM, JST
Oct 06,2022 12:31PM, JST
Spacing:12.22 Pts/Panel1350
Plate Name: 20221006_GNP

Gray line indicates quality value

(QV) < 40.

