

RIKEN Clone ID : W01A018E15

Vector : pENTR-TOPO

Gene	SLC16A11	
Accession ID of Origin	AK074674.1	1803 bp
	CDS	1416 bp

● Plasmid DNA purification

Date : 2022-01-31

Culture : LB (25 ug/ml Kanamycin) 5 ml -> at 37 deg C over night

Date : 2022-02-01

Purification : QIAGEN Miniprep kit -> dH₂O 100 ul

● Digestion by restriction enzyme/Concentration calibration

Date : 2022-02-01

DNA concentration (O.D.): 146 ng/ul

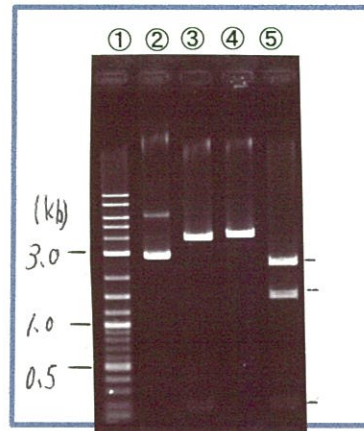
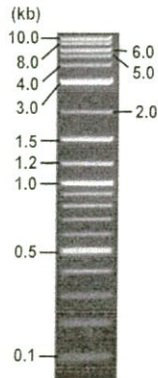
< Size of fragment expected from this clone >

DNA	0.7 ul
Enzyme (NotI + EcoRV)	0.5 + 0.5 ul
Buffer H	1 ul
dH ₂ O	7.3 ul
Total	10 ul

NotI	4.0, 0.2 kb
EcoRV	4.2 kb
NotI + EcoRV	2.5kb (Vector) 1.5, 0.2 kb

Electrophoresis : 1% agarose gel, 1x TAE Buffer

Marker : 2-Log DNA Ladder (NEB#N3200L)



- ①:Marker
- ②:uncut
- ③:NotI
- ④:EcoRV
- ⑤:NotI+EcoRV

● Adjust plasmid DNA solution to 25 ng/ul

Date : _____

DNA (<u>146</u> ng/ul)	<u>82.0</u> ul
10x TE	<u>47.8</u> ul
dH ₂ O	<u>349.0</u> ul
Total	<u>478.8</u> ul

● Confirmation of the insertion sequence

Date : 2022.02.03

Primer A	M13
Primer B	T7 long
Primer C	-
List of Sequencing Primers	http://dna.brc.riken.jp/en/GNPclone3en.html

● Shipping

Conc. : 25 ng/μl, Volume : 40 μl

Conc. : ng/μl, Volume : μl

APPROVED BY : <http://dna.brc.riken.jp/index.html>



S/N G:73 A:70 T:40 C:71
KB.bcp
KB 1.4.1.8 Cap:3

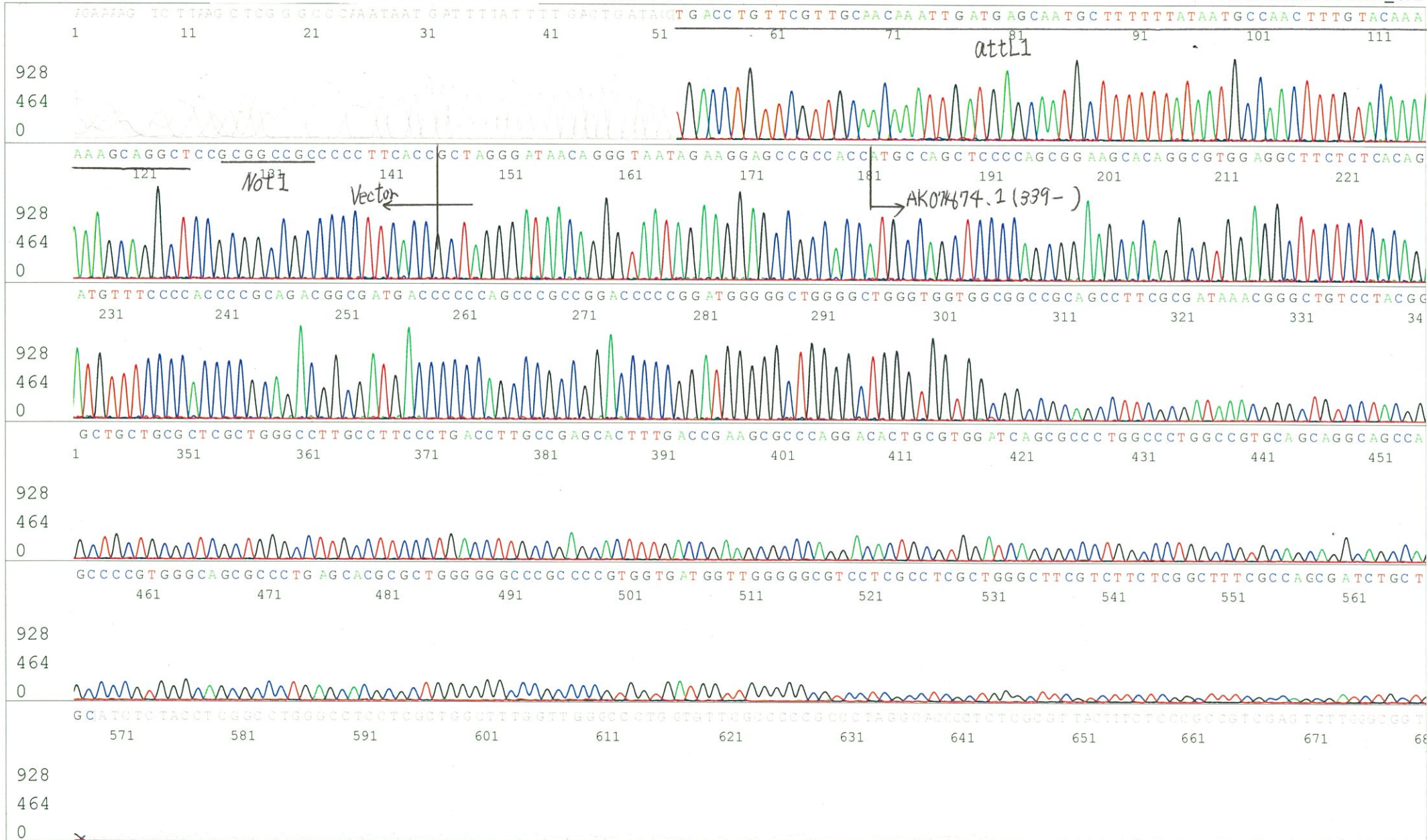
Primer A : M13

5' GTTTTCCCAGTCACGACGTTGTA 3'

8472_W01A018E15_B2As_M13(-40)_A03_03_ABI24
8472_W01A018E15_B2As_M13(-40)
KB_3500_POP7_BDTv3.mob
Pts 1769 to 8707 Pk1 Loc:1737
Version 6.0 HiSQV Bases: 659

Gray line indicates quality value
(QV) < 40.

Inst Model/Name 3500/3500 Instrument
Feb 02,2022 09:56AM, JST
Feb 02,2022 10:11AM, JST
Spacing:11.15 Pts/Panel1350
Plate Name: 20220202_GNP



S/N G:268 A:320 T:138 C:2 Primer B : T7 long
KB.bcp
KB 1.4.1.8 Cap:6 5' CGCCAAGCTCTAATACGACTCACTATAGGG 3'

Gray line indicates quality value
(QV) < 40.

