

**RIKEN Clone ID : W01A018D03**

Vector : pENTR-TOPO

Gene	TMPRSS2	
Accession ID of Origin	BC051839.1	3195 bp
	CDS	1479 bp

● Plasmid DNA purification

Date : 181001

Culture : LB (25 ug/ml Kanamycin) 5 ml -> at 37 deg C over night

Date : 181002

Purification : QIAGEN Miniprep kit -> dH<sub>2</sub>O 100 ul

● Digestion by restriction enzyme/Concentration calibration

Date : 181002

DNA concentration (O.D.): 103 ng/ul

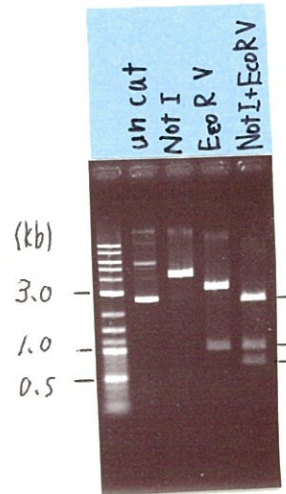
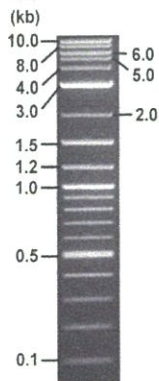
< Size of fragment expected from this clone >

DNA	/	ul
Enzyme (NotI + EcoRV)	0.5 + 0.5	ul
Buffer H	1	ul
dH <sub>2</sub> O	7	ul
Total	10	ul

NotI	4.2	kb	
EcoRV	3.2, 1.0	kb	
NotI + EcoRV	2.5kb (Vector)	1.0, 0.7	kb

Electrophoresis : 1% agarose gel, 1x TAE Buffer

Marker : 2-Log DNA Ladder (NEB#N3200L)



● Adjust plasmid DNA solution to 25 ng/ul

Date : 181005

DNA ( <u>103</u> ng/ul)	86.0	ul
10x TE	35.4	ul
dH <sub>2</sub> O	232.9	ul
Total	354.3	ul

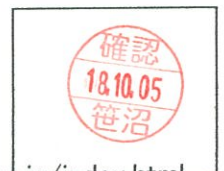
● Confirmation of the insertion sequence

Date : 181003

Primer A	M13
Primer B	T7 long
Primer C	-
List of Sequencing Primers	<a href="http://dna.brc.riken.jp/en/GNPclone3en.html">http://dna.brc.riken.jp/en/GNPclone3en.html</a>

● Shipping

Conc. : 25 ng/ul, Volume : 40 ul  
 Conc. :      ng/ul, Volume :      ul



APPROVED BY : <http://dna.brc.riken.jp/index.html>

S/N G:27 A:31 T:30 C:52

Primer A : M13

W01A018D03\_A8ls\_M13

Oct 03,2018 10:17AM, JST

KB.bcp

KB\_3500\_POP7\_BDTv3.mob

Gray line indicates quality value

Oct 03,2018 10:47AM, JST

KB 1.4.1.8 Cap:5

5' GTTTTCCCAGTCACGACGTTGTA 3'

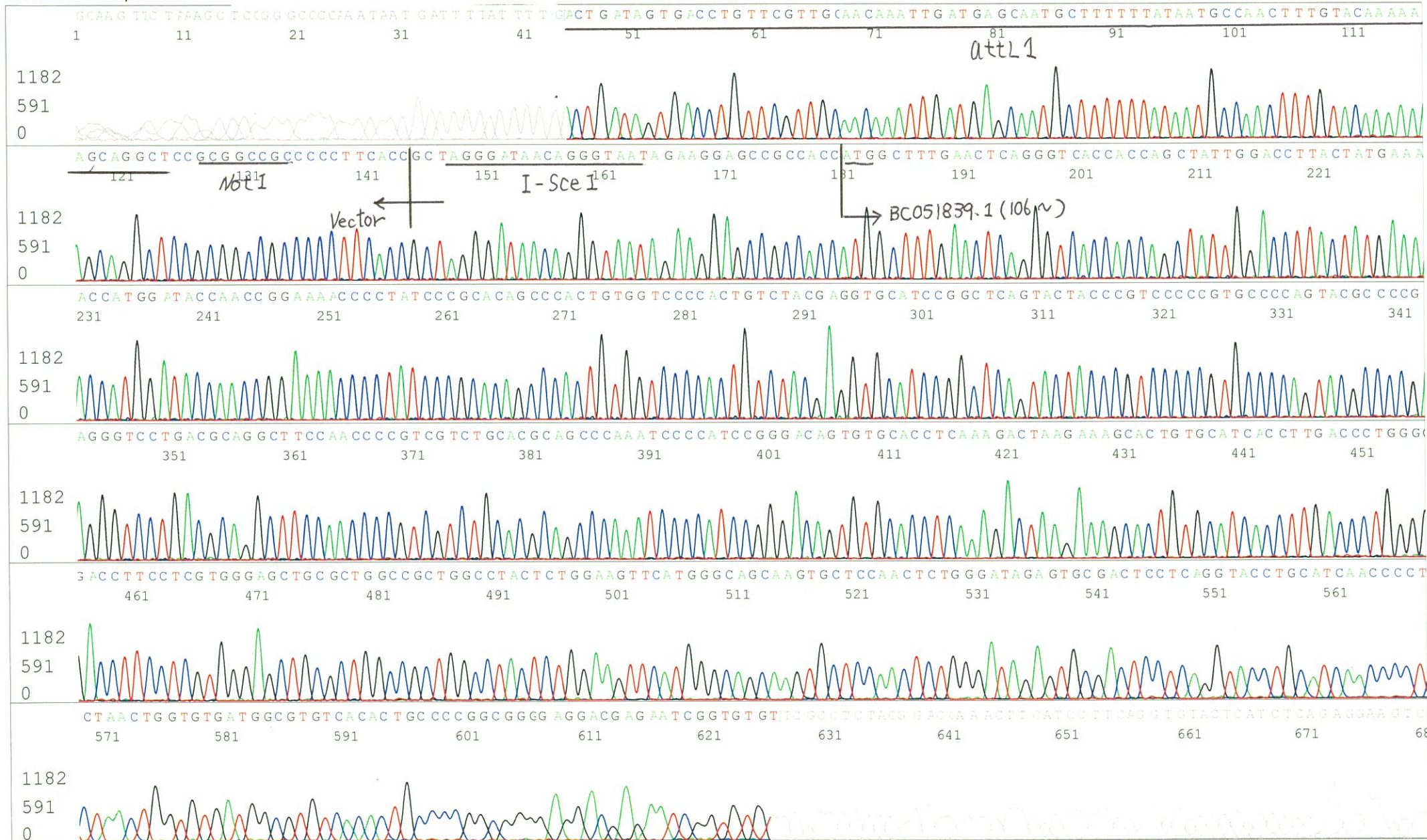
Pts 1727 to 8703 Pk1 Loc:1695

(QV) < 40.

Spacing:11.12 Pts/Panel1350

Version 6.0 HiSQV Bases: 702

Plate Name: 20181003\_GNP



S/N G:17 A:20 T:24 C:30  
KB.bcp  
KB 1.4.1.8 Cap:6

Primer B : T7 long

5' CGCCAAGCTCTAATACGACTCACTATAGGG 3'

Gray line indicates quality value  
(QV) < 40.

