

RIKEN Clone ID : W01A013C22

Vector : pENTR-TOPO

Gene	FLJ25006	
Accession ID of Origin	AK057735.1	1433 bp
	<i>CDS</i>	825 bp

● Plasmid DNA purification

Date : 161031

Culture : LB (25 ug/ml Kanamycin) 5 ml -> at 37 deg C over night

Date : 161101

Purification : QIAGEN Miniprep kit -> dH₂O 100 ul

● Digestion by restriction enzyme/Concentration calibration

Date : 161101

DNA concentration (O.D.): 147 ng/ul

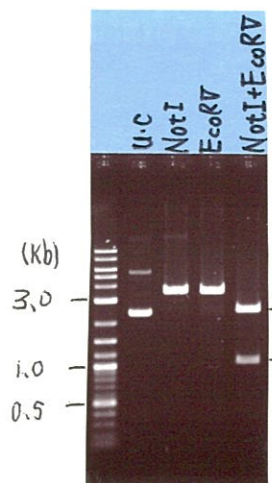
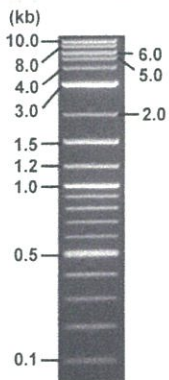
< Size of fragment expected from this clone >

DNA	0.6	ul
Enzyme (NotI + EcoRV)	0.5 + 0.5	ul
Buffer H	1	ul
dH ₂ O	7.4	ul
Total	10	ul

NotI	3.5	kb
EcoRV	3.5	kb
NotI + EcoRV	2.5kb (Vector)	1.0 kb

Electrophoresis : 1% agarose gel, 1x TAE Buffer

Marker : 2-Log DNA Ladder (NEB#N3200L)



● Adjust plasmid DNA solution to 25 ng/ul

Date : 161104

● Confirmation of the insertion sequence

Date : 161102

DNA (<u>147</u> ng/ul)	85.0	ul
10x TE	50.0	ul
dH ₂ O	364.8	ul
Total	499.8	ul

Primer A	M13
Primer B	T7 long
Primer C	-
List of Sequencing Primers	http://dna.brc.riken.jp/en/GNPclone3en.html

● Shipping

Conc. : 25 ng/ul, Volume : 40 ul

Conc. : ng/ul, Volume : ul

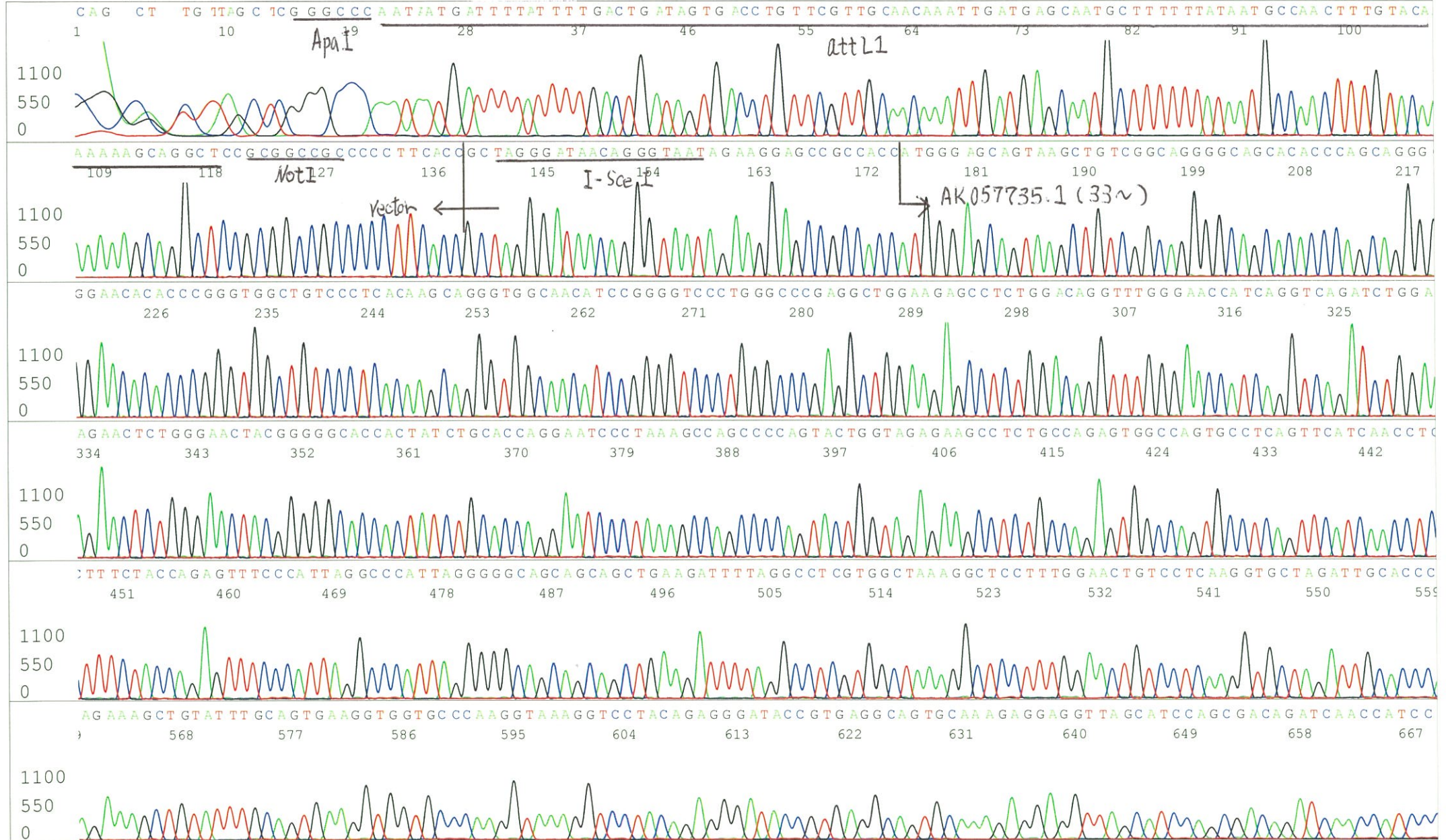


APPROVED BY : <http://dna.brc.riken.jp/index.html>

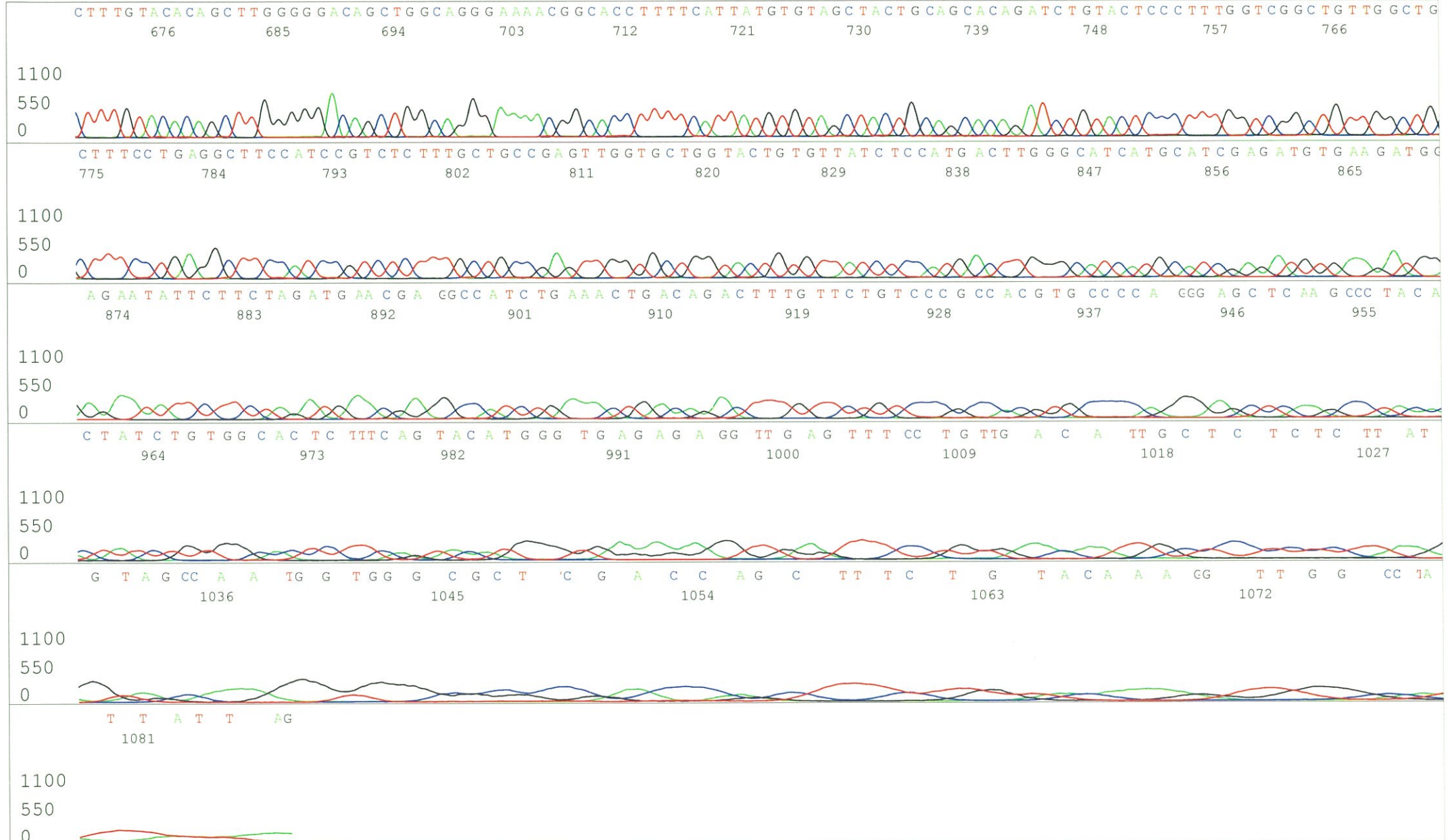
S/N G:790 A:634 T:571 C:715
KB.bcp
KB 1.4.1.8 Cap:13

Primer A : M13

5' GTTTTCCAGTCACGACGTTGTA 3'

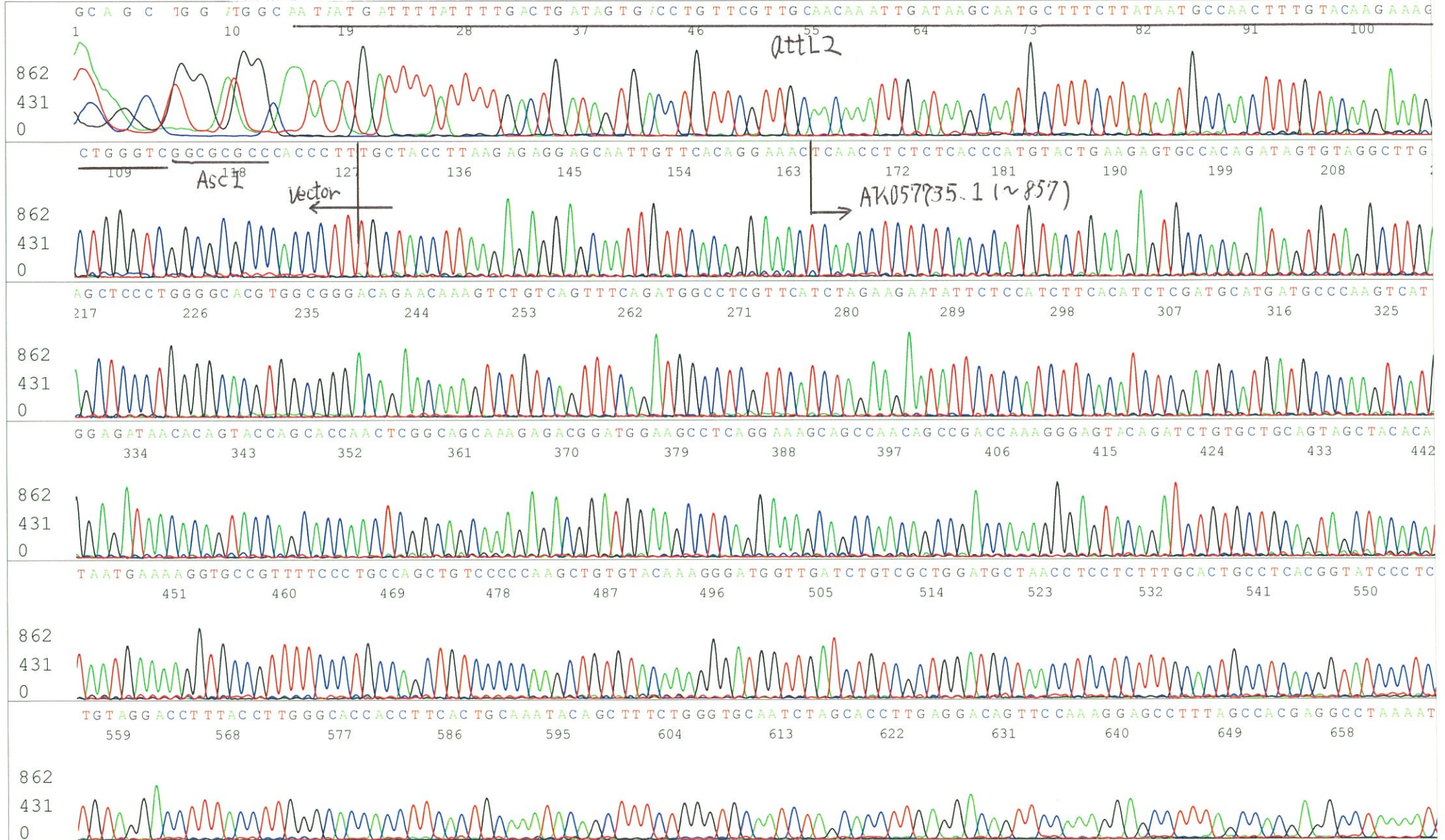


S/N G:790 A:634 T:571 C:715
KB.bcp
KB 1.4.1.8 Cap:13



S/N G:426 A:404 T:399 C:44
KB.bcp
KB 1.4.1.8 Cap:16

Primer B: T7 long
5' CGCCAAGCTCTAATACGACTCACTATAGGG 3'



S/N G:426 A:404 T:399 C:447
KB.bcp
KB 1.4.1.8 Cap:16

