

RIKEN Clone ID : W01A006I15

Vector : pENTR/D-TOPO

Gene	NRF1		
Accession No.	BC016925.1	2514 bp	1..2514
	<i>CDS</i>	1704 bp	79..1647

● Plasmid DNA purification

Date : 130225
Date : 130226

Culture : LB (25 ug/ml Kanamycin) 5 ml → at 37 deg C over night
Purification : QIAGEN Miniprep kit → dH₂O 100 ul

● Digestion by restriction enzyme/Concentration calibration

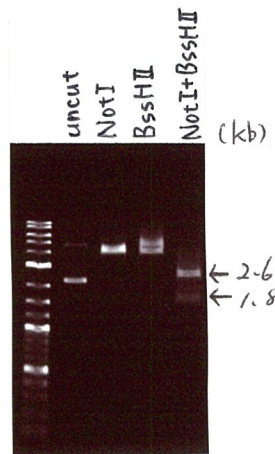
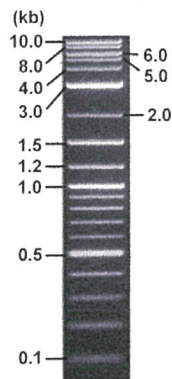
Date : 130314

DNA concentration (O.D.): 227 ng/ul

DNA	0.1 ul
Enzyme (NotI + BssHII)	0.5 + 0.5 ul
Buffer H	1 ul
dH ₂ O	7.9 ul
Total	10 ul

Erectrophoresis : 1% agarose gel, 1x TAE Buffer

Marker : 2-Log DNA Ladder (NEB#N3200L)



<Expected size of fragment from BC016925.1 CDS>

2553, 1804 bp

● Confirmation of the insertion sequence

Date : 130227

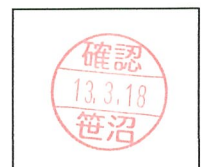
Primer A	M13
Primer B	T7 long
Primer C	-
List of Sequencing Primers	http://dna.brc.riken.jp/en/GNPclone3en.html

● Adjustment of DNA concentration

Shipping amount : 40 ul
Concentration at the time of preparation of plasmid DNA : 25 ng

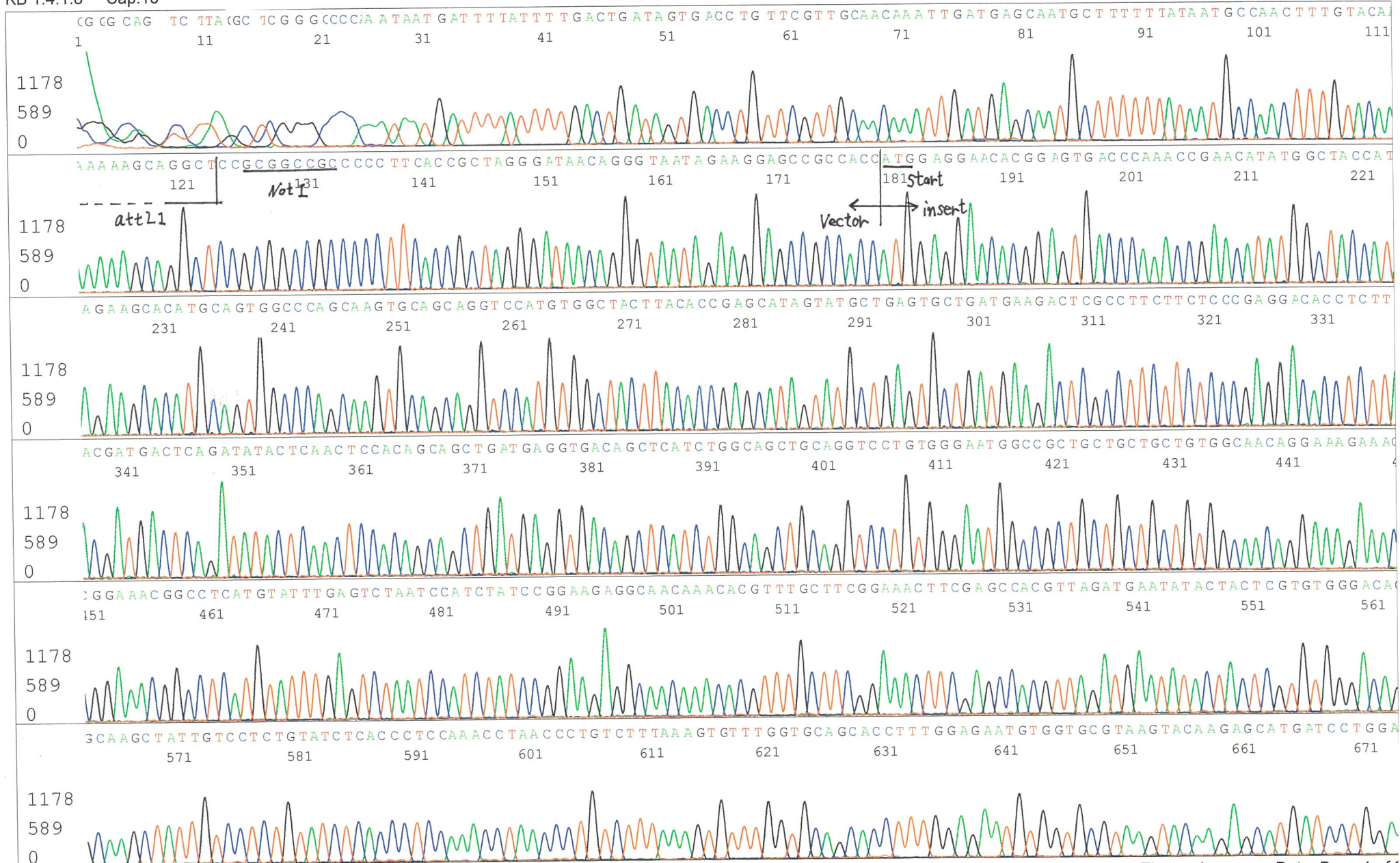
Date : 130315

DNA (<u>227</u> ng/ul)	89	ul
10x TE	80.8	ul
dH ₂ O	638.3	ul
Total	808.1	ul



APPROVED BY :

<http://dna.brc.riken.jp/index.html>



S/N G:40 A:21 T:28 C:29
KB.bcp
KB 1.4.1.8 Cap:11
Primer B : T7 long
5' CGCCAAGCTCTAATACGACTCACTATAGGG 3'

