

RIKEN Clone ID : W01A004004

Vector : pENTR-TOPO

Gene	PSMC5	
Accession ID of Origin	BC001932.1	1326 bp
	CDS	1221 bp

● Plasmid DNA purification

Date : 22.10.03

Culture : LB (25 ug/ml Kanamycin) 5 ml → at 37 deg C over night

Date : 22.10.04

Purification : QIAGEN Miniprep kit → dH₂O 100 ul

● Digestion by restriction enzyme/Concentration calibration

Date : 22.10.04

DNA concentration (O.D.): 155.6 ng/ul

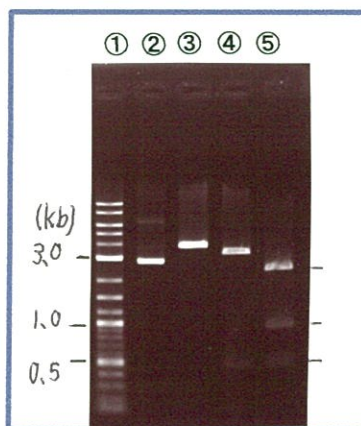
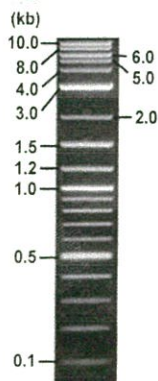
< Size of fragment expected from this clone >

DNA	<u>0.7</u> ul
Enzyme (NotI + EcoRV)	0.5 + 0.5 ul
Buffer H	1 ul
dH ₂ O	<u>7.2</u> ul
Total	10 ul

NotI	4.0 kb
EcoRV	3.5, 0.5 kb
NotI + EcoRV	2.5kb (Vector) 1.0, 0.5 kb

Electrophoresis : 1% agarose gel, 1x TAE Buffer

Marker : 2-Log DNA Ladder (NEB#N3200L)



- ①:Marker
- ②:uncut
- ③:NotI
- ④:EcoRV
- ⑤:NotI+EcoRV

● Adjust plasmid DNA solution to 25 ng/ul

Date : 22.10.18

● Confirmation of the insertion sequence

Date : 22.10.07

DNA (<u>155</u> ng/ul)	<u>84.0</u> ul
10x TE	<u>52.0</u> ul
dH ₂ O	<u>384.8</u> ul
Total	<u>520.8</u> ul

Primer A	M13
Primer B	T7 long
Primer C	-
List of Sequencing Primers	http://dna.brc.riken.jp/en/GNPclone3en.html

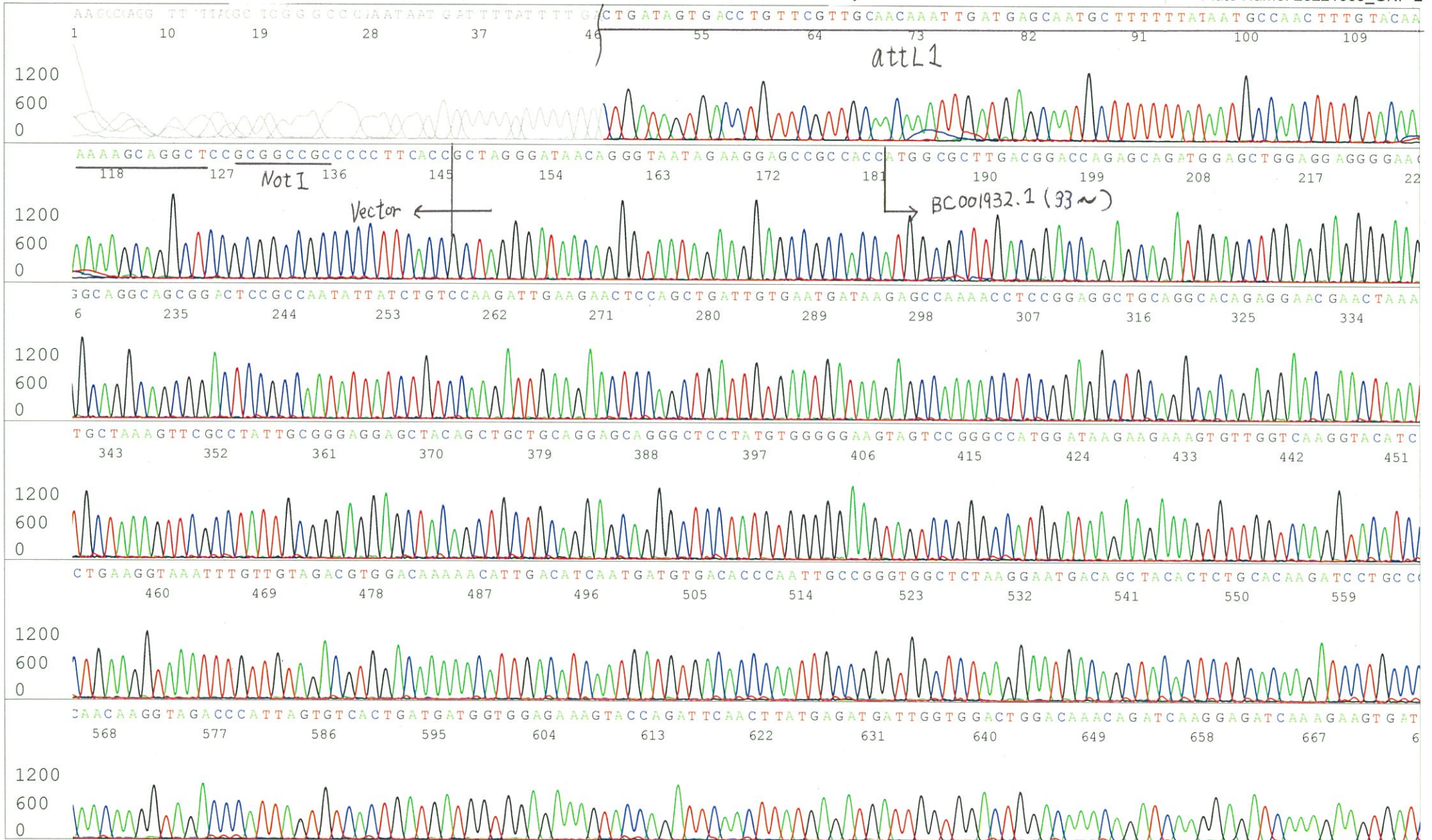
● Shipping

Conc. : 25 ng/ul, Volume : 40 ul

Conc. : ng/ul, Volume : ul



APPROVED BY : <http://dna.brc.riken.jp/index.html>



S/N G:31 A:44 T:30 C:45
KB.bcp
KB 1.4.1.8 Cap:4

Primer B : T7 long
5' CGCCAAGCTCTAATACGACTCACTATAGGG 3'

Gray line indicates quality value
(QV) < 40.

