

RIKEN Clone ID : M01C097A10

Vector : pDONR221

Gene	SLC16A3	
Accession ID of Origin	AK127319.1	4210 bp
	CDS	1398 bp

● Plasmid DNA purification

Date : 2022.01.31

Culture : LB (25 ug/ml Kanamycin) 5 ml -> at 37 deg C over night

Date : 2022.02.01

Purification : QIAGEN Miniprep kit -> dH₂O 100 ul

● Digestion by restriction enzyme/Concentration calibration

Date : 2022.02.01

DNA concentration (O.D.): 153 ng/ul

< Size of fragment expected from this clone >

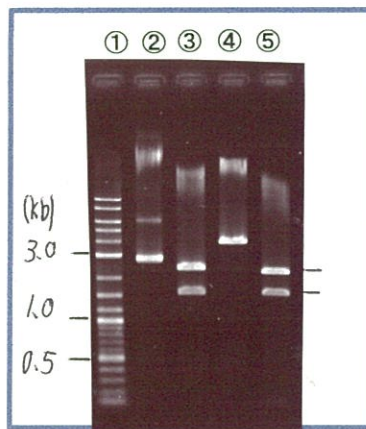
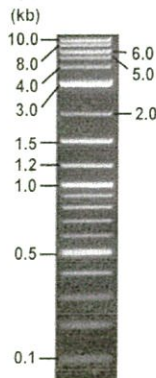
DNA	0.7 ul
Enzyme (HincII + EcoRV)	0.5 + 0.5 ul
Buffer H	1 ul
dH ₂ O	7.3 ul
Total	10 ul

HincII	3.9 kb 2.2, 1.7 kb
EcoRV	3.9 kb
HincII + EcoRV	2.2kb (Vector) 1.7 kb

* Additional HincII site.
just at 3' vector insert junction.

Electrophoresis : 1% agarose gel, 1x TAE Buffer

Marker : 2-Log DNA Ladder (NEB#N3200L)



①:Marker
②:uncut
③:HincII
④:EcoRV
⑤:HincII + EcoRV

● Adjust plasmid DNA solution to 25 ng/ul

Date : _____

DNA (<u>153</u> ng/ul)	<u>80.0</u> ul
10x TE	<u>48.9</u> ul
dH ₂ O	<u>360.7</u> ul
Total	<u>489.6</u> ul

● Confirmation of the insertion sequence

Date : 2022.02.03

Primer A	M13
Primer B	T7 long
Primer C	-
List of Sequencing Primers	http://dna.brc.riken.jp/en/GNPclone3en.html

● Shipping

Conc. : 25 ng/ul, Volume : 40 ul

Conc. : _____ ng/ul, Volume : _____ ul



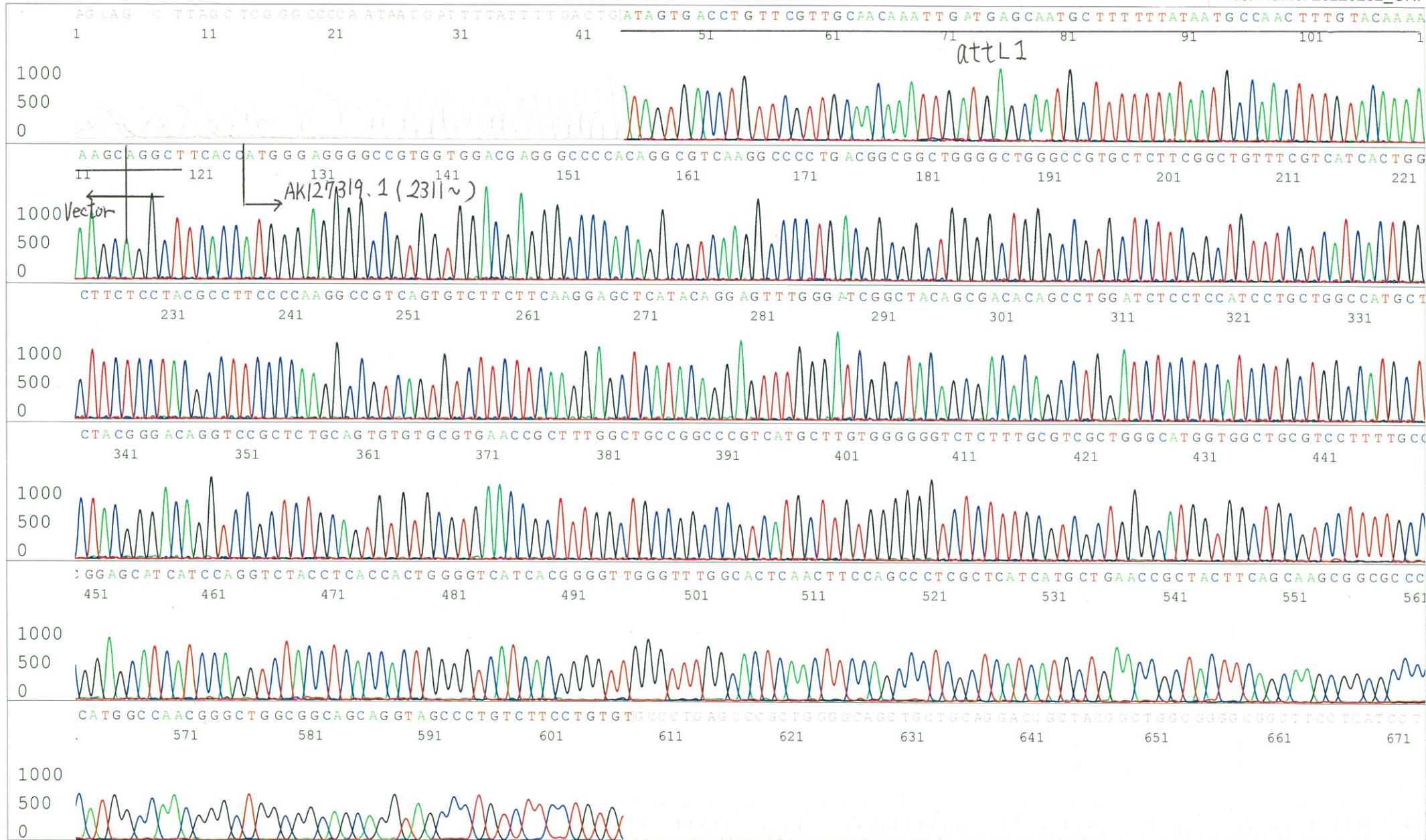
APPROVED BY : <http://dna.brc.riken.jp/index.html>

S/N G:248 A:198 T:203 C:28
KB.bcp
KB 1.4.1.8 Cap:17

Primer A : M13

5' GTTTTCCCAGTCACGACGTTGTA 3'

Gray line indicates quality value
(QV) < 40.



S/N G:73 A:83 T:50 C:86
KB.bcp
KB 1.4.1.8 Cap:20

Primer B : T7 long

5' CGCCAAGCTCTAATACGACTCACTATAGGG 3'

Gray line indicates quality value
(QV) < 40.

