

RIKEN Clone ID : M01C096B02

Vector : pDONR221

Gene	FLJ16165	
Accession ID of Origin	AK131245.1	2311 bp
	<i>CDS</i>	1317 bp

● Plasmid DNA purification

Date : 190514

Culture : LB (25 ug/ml Kanamycin) 5 ml -> at 37 deg C over night

Date : 190513

Purification : QIAGEN Miniprep kit -> dH₂O 100 ul

● Digestion by restriction enzyme/Concentration calibration

Date : 190514

DNA concentration (O.D.): 204 ng/ul

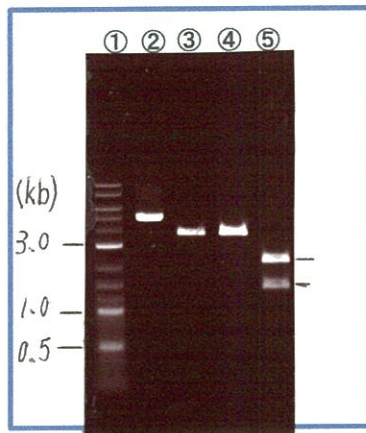
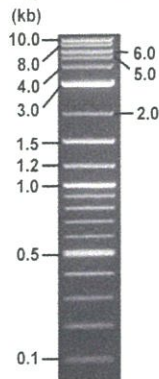
< Size of fragment expected from this clone >

DNA	<u>0.5</u> ul
Enzyme (HincII + EcoRV)	0.5 + 0.5 ul
Buffer H	1 ul
dH ₂ O	<u>7.5</u> ul
Total	10 ul

HincII	3.8 kb
EcoRV	3.8 kb
HincII + EcoRV	2.2kb (Vector) 1.6 kb

Electrophoresis : 1% agarose gel, 1x TAE Buffer

Marker : 2-Log DNA Ladder (NEB#N3200L)



- ①:Marker
- ②:uncut
- ③:HincII
- ④:EcoRV
- ⑤:HincII + EcoRV

● Adjust plasmid DNA solution to 25 ng/ul

Date : _____

DNA (<u>204</u> ng/ul)	<u>86.0</u> ul
10x TE	<u>70.1</u> ul
dH ₂ O	<u>545.6</u> ul
Total	<u>701.7</u> ul

● Confirmation of the insertion sequence

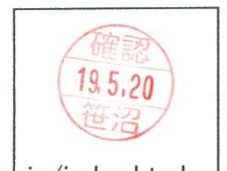
Date : 190515

Primer A	M13
Primer B	T7 long
Primer C	-
List of Sequencing Primers	http://dna.brc.riken.jp/en/GNPclone3en.html

● Shipping

Conc. : 25 ng/ul, Volume : 40 ul

Conc. : ng/ul, Volume : ul



S/N G:202 A:179 T:180 C:287

Primer A : M13

8472_M01C096B02_A9E9_2_M13(-40)

KB_3500_POP7_BDTv3.mob

Gray line indicates quality value

May 15,2019 10:03AM, JST

KB.bcp

Pts 1762 to 8706 Pk1 Loc:1730

May 15,2019 10:17AM, JST

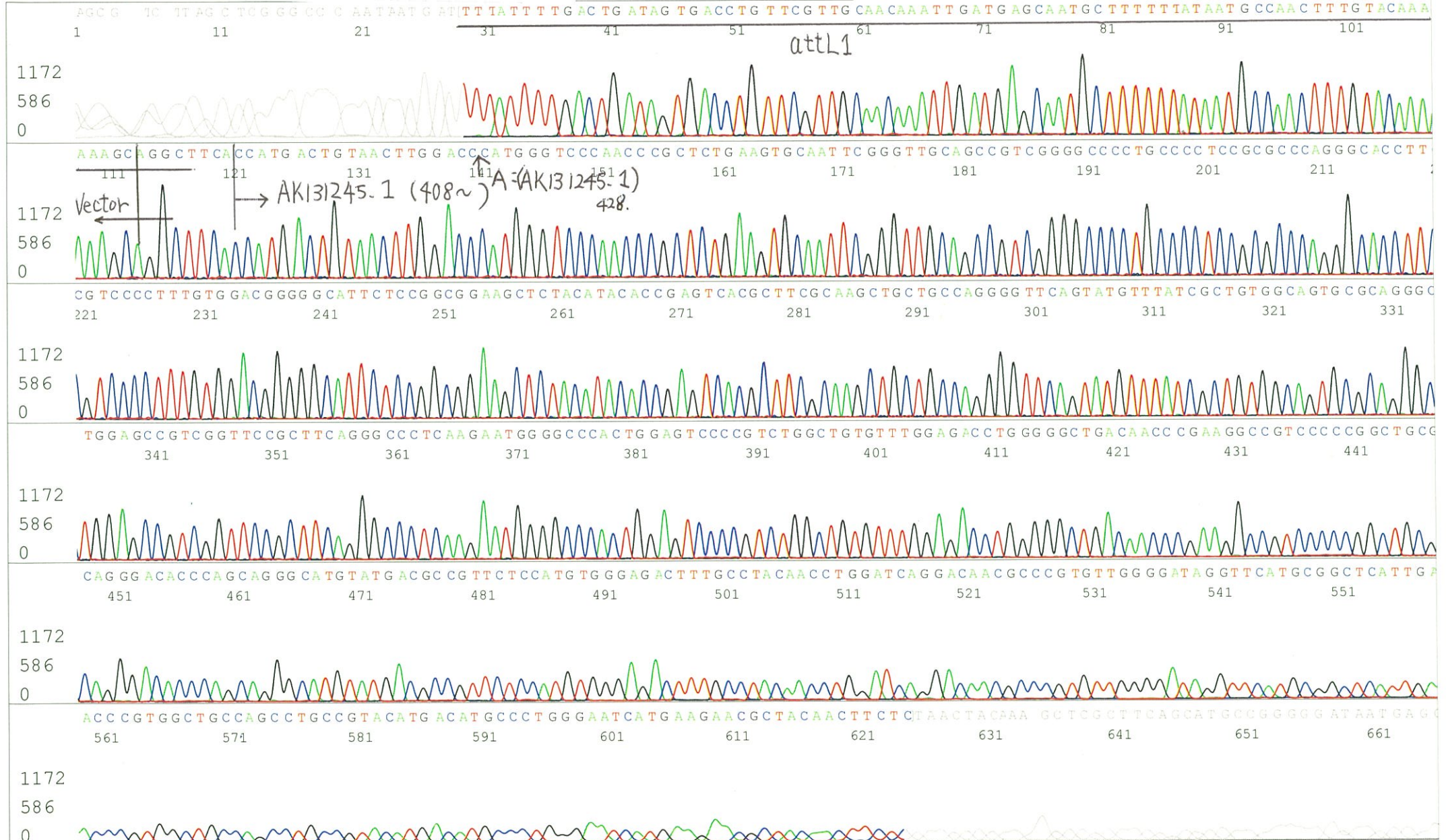
KB 1.4.1.8 Cap:8

5' GTTTTCCAGTCACGACGTTGTA 3'

Version 6.0 HiSQV Bases: 698 (QV) < 40.

Spacing:10.43 Pts/Panel1350

Plate Name: 20190515_GNP



S/N G:63 A:74 T:49 C:80

Primer B : T7 long

8472_M01C093B02_A9E9_2_T7 long

KB_3500_POP7_BDTv3.mob

Gray line indicates quality value

May 16,2019 10:27AM, JST

KB.bcp

Pts 1864 to 8705 Pk1 Loc:1832

May 16,2019 10:51AM, JST

KB 1.4.1.8 Cap:1

5' CGCCAAGCTCTAATACGACTCACTATAGGG 3'

Version 6.0 HiSQV Bases: 698

(QV) < 40.

Spacing:10.7 Pts/Panel1350

Plate Name: 20190516_GNP

