

**RIKEN Clone ID : M01C032B16**

Vector : pDONR221

Gene	ABCG1	
Accession ID of Origin	BC029158.1	2996 bp
	<i>CDS</i>	2001 bp

● Plasmid DNA purification

Date : 170116

Culture : LB (25 ug/ml Kanamycin) 5 ml -> at 37 deg C over night

Date : 170117

Purification : QIAGEN Miniprep kit -> dH<sub>2</sub>O 100 ul

● Digestion by restriction enzyme/Concentration calibration

Date : 170117

DNA concentration (O.D.): 190 ng/ul

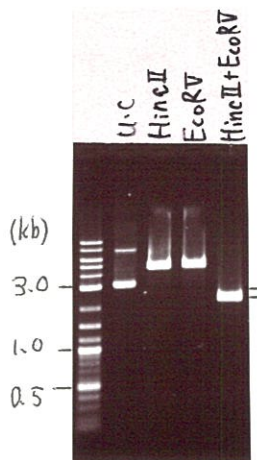
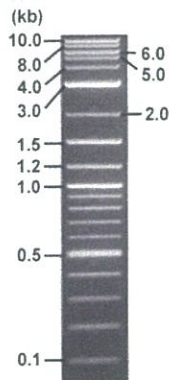
< Size of fragment expected from this clone >

DNA	0.5	ul
Enzyme (HincII + EcoRV)	0.5 + 0.5	ul
Buffer H	1	ul
dH <sub>2</sub> O	7.5	ul
Total	10	ul

HincII	4.5	kb
EcoRV	4.5	kb
HincII + EcoRV	2.2kb (Vector)	2.3 kb

Electrophoresis : 1% agarose gel, 1x TAE Buffer

Marker : 2-Log DNA Ladder (NEB#N3200L)



● Adjust plasmid DNA solution to 25 ng/ul

Date : 170119

● Confirmation of the insertion sequence

Date : 170118

DNA ( <u>190</u> ng/ul)	85.0	ul
10x TE	64.6	ul
dH <sub>2</sub> O	496.4	ul
Total	646.0	ul

Primer A	M13
Primer B	T7 long
Primer C	-
List of Sequencing Primers	<a href="http://dna.brc.riken.jp/en/GNPclone3en.html">http://dna.brc.riken.jp/en/GNPclone3en.html</a>

● Shipping

- Conc. : 25 ng/ul, Volume : 40 ul
- Conc. : ng/ul, Volume : ul

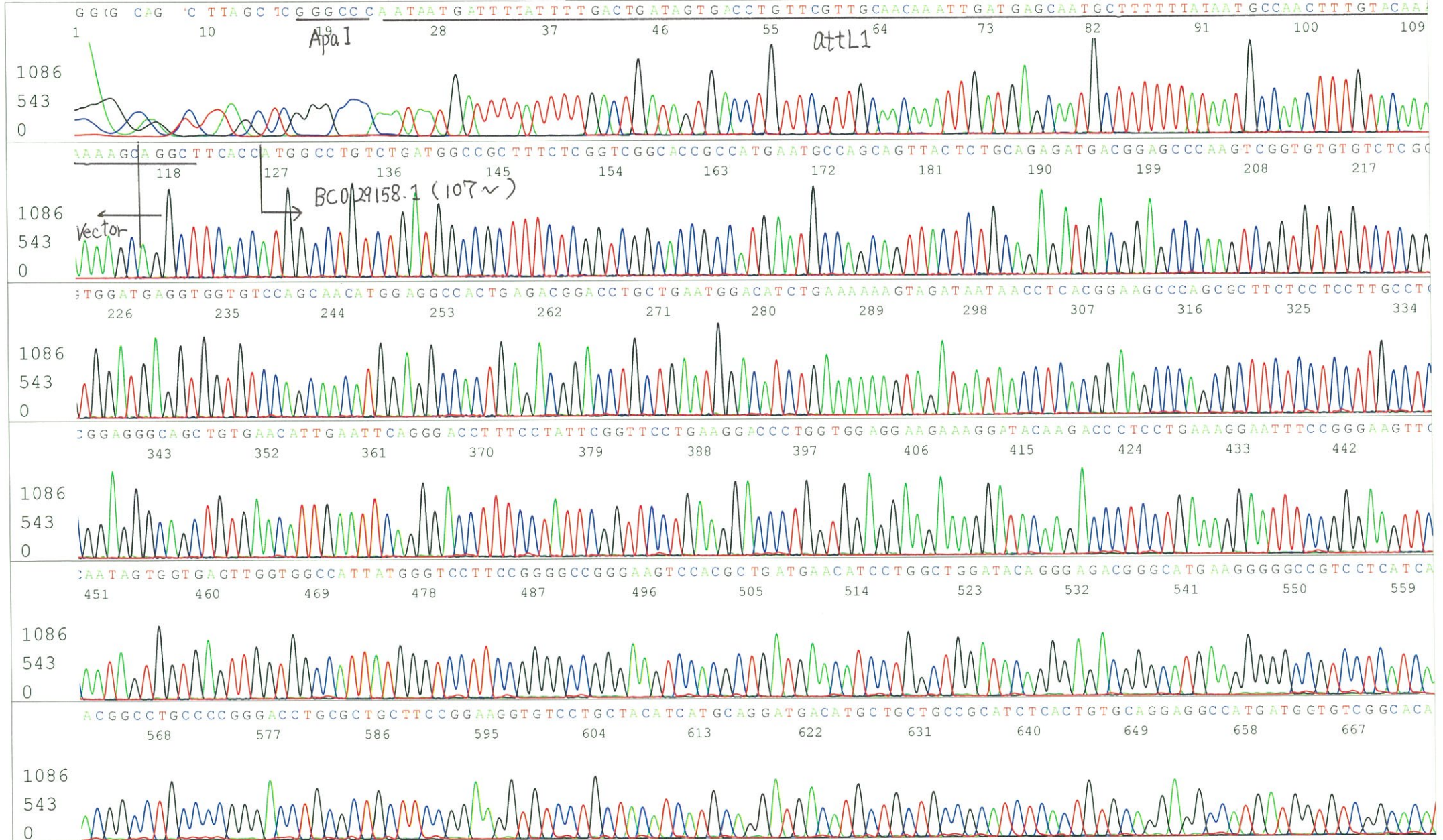


APPROVED BY : <http://dna.brc.riken.jp/index.html>

S/N G:371 A:370 T:329 C:419  
KB.bcp  
KB 1.4.1.8 Cap:20

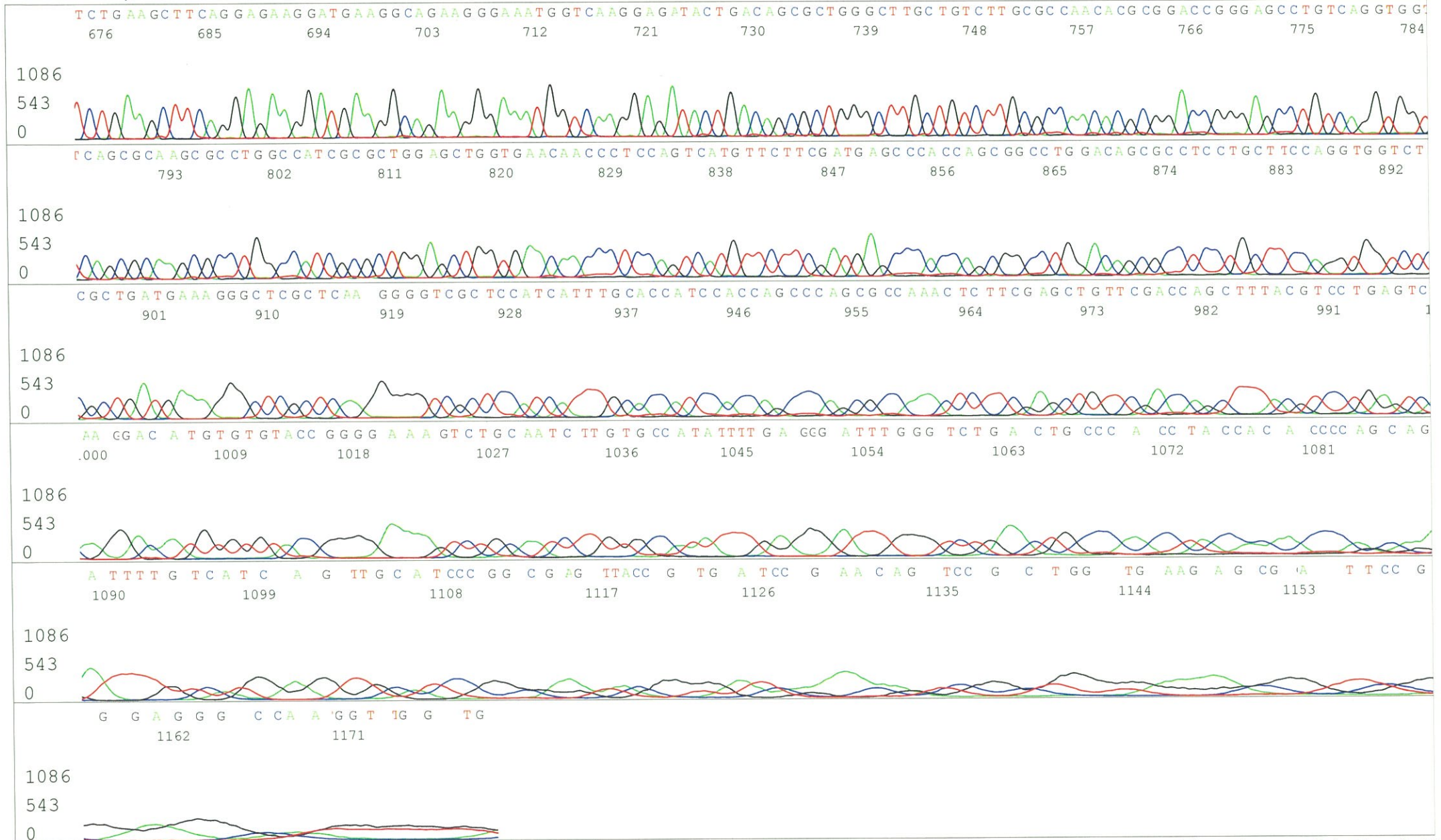
Primer A : M13

5' GTTTTCCAGTCACGACGTTGTA 3'



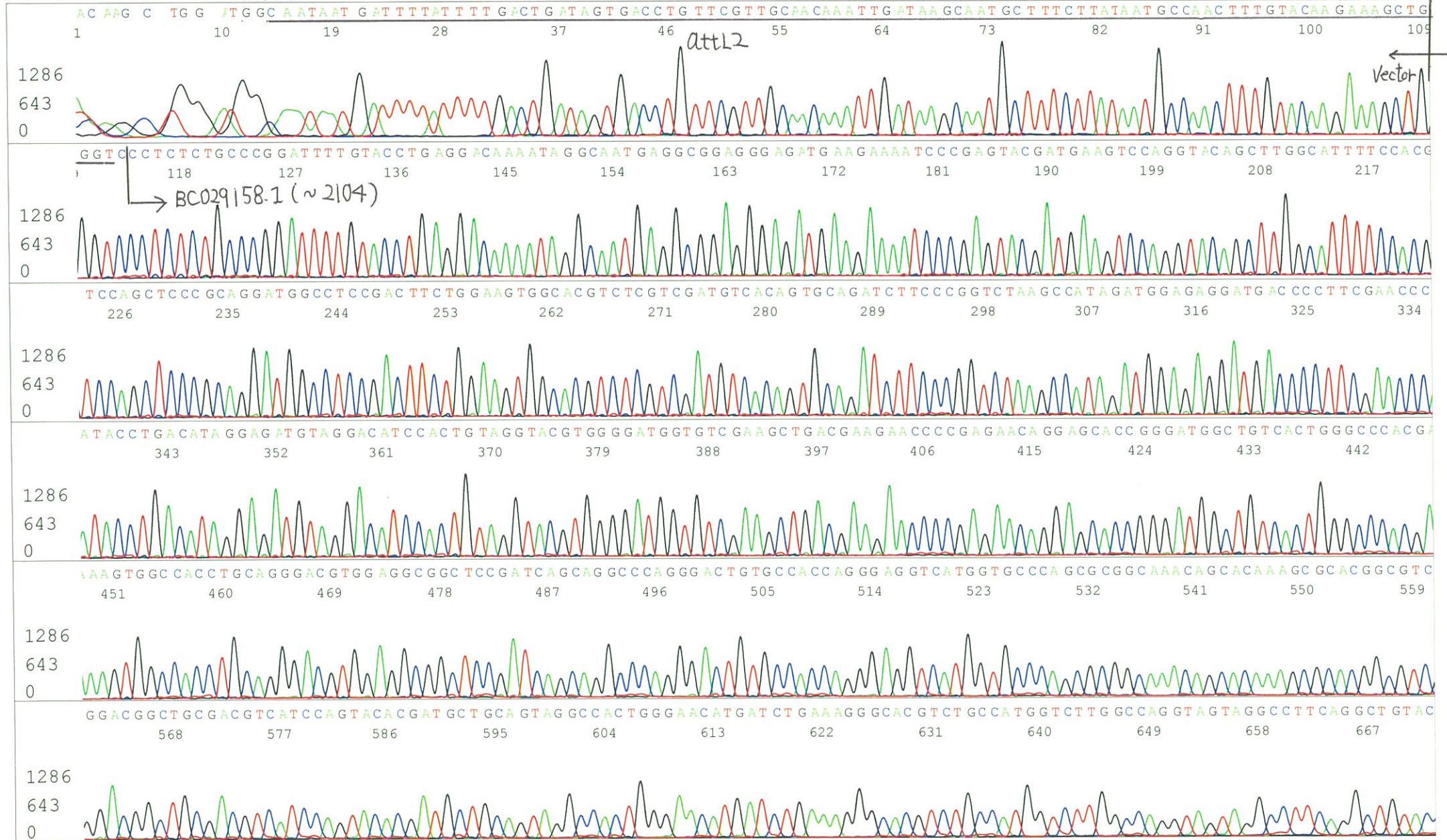


S/N G:371 A:370 T:329 C:419  
KB.bcp  
KB 1.4.1.8 Cap:20





S/N G:178 A:220 T:160 C:2  
KB.bcp  
KB 1.4.1.8 Cap:23  
Primer B: T7 long  
5' CGCCAAGCTCTAATACGACTCACTATAGGG 3'





S/N G:178 A:220 T:160 C:212  
KB.bcp  
KB 1.4.1.8 Cap:23

