

RIKEN Clone ID : M01C010A12

Vector : pDONR221

Gene	LOC129285	
Accession ID of Origin	AK122900.1	3188 bp
	CDS	- bp

● Plasmid DNA purification

Date : 180213

Culture : LB (25 ug/ml Kanamycin) 5 ml -> at 37 deg C over night

Date : 180215

Purification : QIAGEN Miniprep kit -> dH₂O 100 ul

● Digestion by restriction enzyme/Concentration calibration

Date : 180215

DNA concentration (O.D.): 38 ng/ul

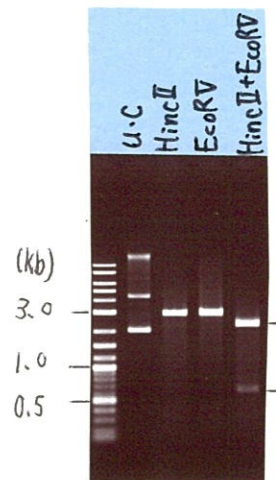
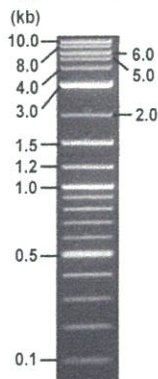
< Size of fragment expected from this clone >

DNA	2.5	ul
Enzyme (HincII + EcoRV)	0.5 + 0.5	ul
Buffer H	1	ul
dH ₂ O	5.5	ul
Total	10	ul

HincII		size unidentified
EcoRV		size unidentified
HincII + EcoRV	2.2kb (Vector)	size unidentified

Electrophoresis : 1% agarose gel, 1x TAE Buffer

Marker : 2-Log DNA Ladder (NEB#N3200L)



● Adjust plasmid DNA solution to 25 ng/ul

Date : 180301

DNA (<u>38</u> ng/ul)	70.0	ul
10x TE	10.6	ul
dH ₂ O	25.8	ul
Total	106.4	ul

● Confirmation of the insertion sequence

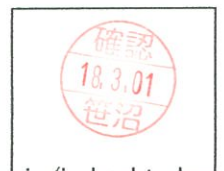
Date : 180221

Primer A	M13
Primer B	T7 long
Primer C	-
List of Sequencing Primers	http://dna.brc.riken.jp/en/GNPclone3en.html

● Shipping

Conc. : 25 ng/ul, Volume : 40 ul

Conc. : ng/ul, Volume : ul



APPROVED BY : <http://dna.brc.riken.jp/index.html>

S/N G:84 A:104 T:95 C:114
KB.bcp
KB 1.4.1.8 Cap:1

Primer A : M13
5' GTTTTCCAGTCACGACGTTGTA 3'

Gray line indicates quality value
(QV) < 40.



S/N G:39 A:38 T:50 C:60
KB.bcp
KB 1.4.1.8 Cap:4

Primer B : T7 long

5' CGCCAAGCTCTAATACGACTCACTATAGGG 3'

M01C010A12_A8B9_T7long

KB_3500_POP7_BDTv3.mob

Pts 1694 to 8497 Pk1 Loc:1662

Version 6.0 HiSQV Bases: 707

Gray line indicates quality value
(QV) < 40.

Feb 21, 2018 06:24PM, JST

Feb 21, 2018 06:41PM, JST

Spacing:10.4 Pts/Panel1350

Plate Name: 20180221_GNP

