

RIKEN Clone ID : IRAL058M14

Lot#: 7566_B1Dm

Vector : pOTB7

Gene	LRP1	
Accession No.	BC072015.1	1710 bp
	<i>CDS</i>	891 bp

● Plasmid DNA purification

Date : 21.04.22

Culture : LB (25 ug/ml Chloramphenicol) 5 ml -> at 37 deg C over night

Date : 21.04.23

Purification : QIAGEN Miniprep kit -> dH₂O 100 ul

● Digestion by restriction enzyme/Concentration calibration

Date : 21.04.23

DNA concentration (O.D.): 254 ng/ul

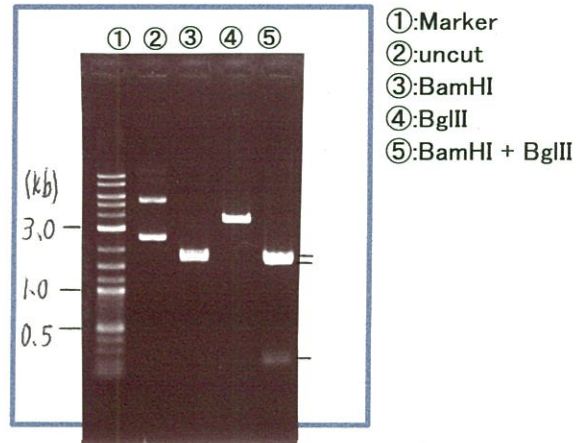
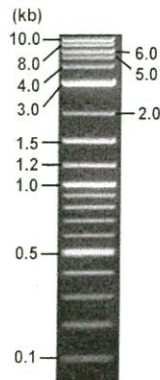
< Size of fragment expected from this clone >

DNA	<u>0.4</u> ul
Enzyme (BamHI + BglII)	0.5 + 0.5 ul
Buffer H	1 ul
dH ₂ O	<u>7.6</u> ul
Total	10 ul

BamHI	1.8 , 1.7 kb
BglII	3.5 kb
BamHI + BglII	1.6kb (Vector) 1.7, 0.2 kb

Electrophoresis : 1% agarose gel, 1x TAE Buffer

Marker : 2-Log DNA Ladder (NEB#N3200L)



● Adjust plasmid DNA solution to 25 ng/ul

Date : 21.05.11

● Confirmation of the insertion sequence

Date : 21.05.11

DNA (<u>254</u> ng/ul)	<u>88.0</u> ul
10x TE	<u>89.4</u> ul
dH ₂ O	<u>716.6</u> ul
Total	<u>894.0</u> ul

Primer A	pOTB7_F
Primer B	pOTB7_R
Primer C	-
List of Sequencing Primers	http://dna.brc.riken.jp/en/GNPclone3en.html

● Shipping

Conc. : 25 ng/μl, Volume : 40 μl
 Conc. : ng/μl, Volume : μl

APPROVED BY :

<http://dna.brc.riken.jp/index.html>



S/N G:112 A:103 T:65 C:116

Primer A: pOTB7-F

7566_IRAL058M14_B1Dm_pOTB7_F

KB_3500_POP7_BDTv3.mob

Gray line indicates quality value

Apr 27, 2021 09:46AM, JST

Apr 27, 2021 10:02AM, JST

KB.bcp

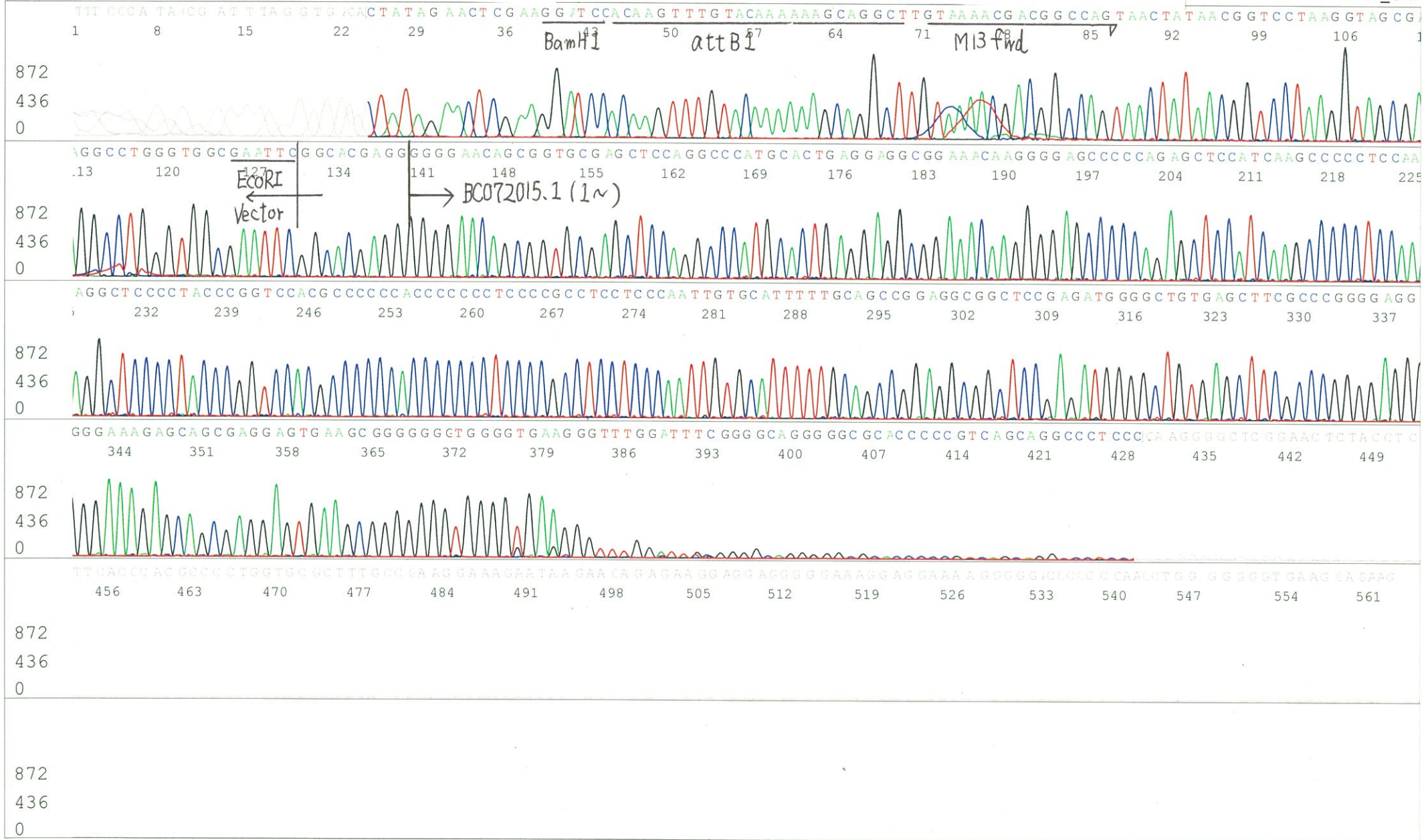
5' AACGCGGCTACAATTAATACATAACC 3'

Pts 1780 to 8704 Pk1 Loc:1748

Version 6.0 HiSQV Bases: 457 (QV) < 40.

Spacing:10.81 Pts/Panel1350

Plate Name: 20210427_GNP



S/N G:88 A:93 T:82 C:107

Primer B: pOTB7-R

7566_IRAL058M14_B1Dm_pOTB7_R

KB_3500_POP7_BDTv3.mob

Gray line indicates quality value

Apr 27,2021 09:46AM, JST

KB.bcp

Pts 1779 to 8704 Pk1 Loc:1747

Apr 27,2021 10:02AM, JST

KB 1.4.1.8 Cap:4

5' GTACTGCAGCCGATTCATTAATGC 3'

Version 6.0 HiSQV Bases: 665

(QV) < 40.

Spacing:10.98 Pts/Panel1350

Plate Name: 20210427_GNP

