

RIKEN Clone ID : IRAL054M08

Lot#: 7566_A8B9

Vector : pOTB7

Gene	GOLGA2	
Accession No.	BC069268.1	4305 bp
	<i>CDS</i>	2973 bp

● Plasmid DNA purification

Date : 180215

Culture : LB (25 ug/ml Chloramphenicol) 5 ml -> at 37 deg C over night

Date : 180216

Purification : QIAGEN Miniprep kit -> dH₂O 100 ul

● Digestion by restriction enzyme/Concentration calibration

Date : 180216

DNA concentration (O.D.): 62 ng/ul

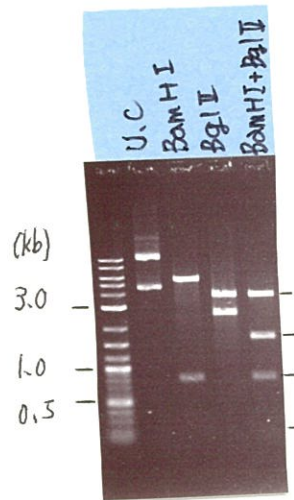
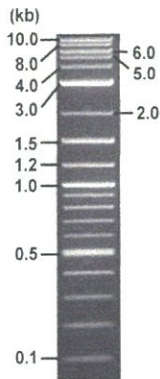
< Size of fragment expected from this clone >

DNA	ul
Enzyme (BamHI + BglII)	0.5 + 0.5 ul
Buffer H	1 ul
dH ₂ O	ul
Total	10 ul

BamHI	5.3, 0.8 kb
BglII	3.6, 2.5 kb
BamHI + BglII	1.6kb (Vector) 3.6, 0.8, 0.1 kb

Electrophoresis : 1% agarose gel, 1x TAE Buffer

Marker : 2-Log DNA Ladder (NEB#N3200L)



● Adjust plasmid DNA solution to 25 ng/ul

Date : 180306

● Confirmation of the insertion sequence

Date : 180227

DNA (<u>62</u> ng/ul)	<u>95.0</u> ul
10x TE	<u>23.5</u> ul
dH ₂ O	<u>117.1</u> ul
Total	<u>235.6</u> ul

Primer A	pOTB7_F
Primer B	pOTB7_R
Primer C : Poly(A) region primer #	<u>40</u>
List of Sequencing Primers	http://dna.brc.riken.jp/en/GNPclone3en.html

● Shipping

Conc. : 25 ng/ul, Volume : 40 ul
 Conc. : ng/ul, Volume : ul



APPROVED BY : <http://dna.brc.riken.jp/index.html>

S/N G:91 A:131 T:103 C:166

Primer A: pOTB7-F

IRAL054M08_A8B9_1_pOTB7_F

Feb 26, 2018 11:29AM, JST

KB.bcp

KB_3500_POP7_BDTv3.mob

Gray line indicates quality value

Feb 26, 2018 11:46AM, JST

KB 1.4.1.8 Cap:3

5' AACGCGGCTACAATTAATACATAACC 3'

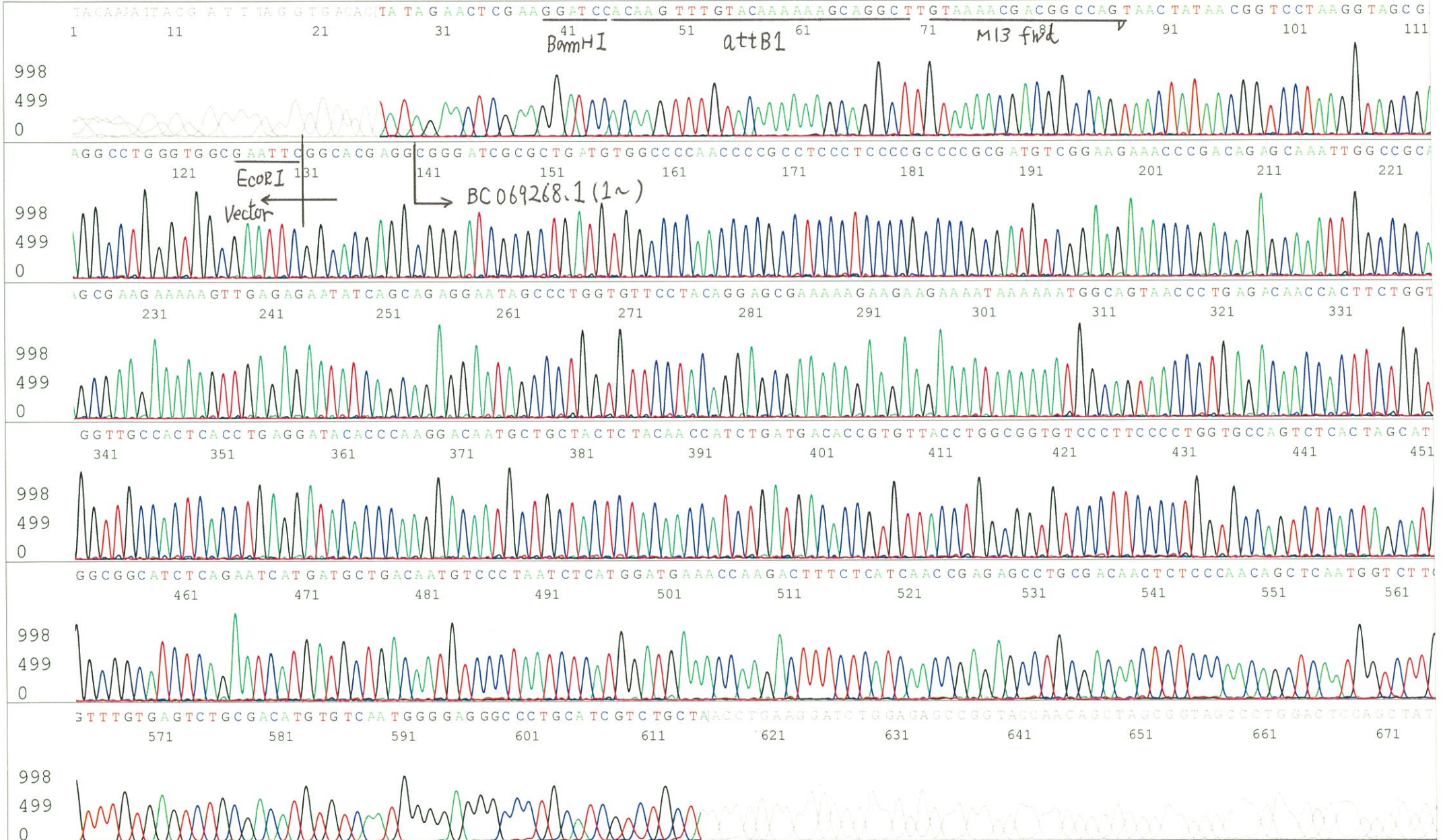
Pts 1734 to 8648 Pk1 Loc:1702

Version 6.0 HiSQV Bases: 709

(QV) < 40.

Spacing:10.44 Pts/Panel1350

Plate Name: 20180226_GNP



S/N G:87 A:87 T:53 C:79
KB.bcp
KB 1.4.1.8 Cap:21

Primer C : Poly(A) region primer #40
5' TTTTTTTTTTTTTTTTTTTT AIG 3'

IRAL054M08_A8B9_1_GNP40
KB_3500_POP7_BDTv3.mob
Pts 1765 to 8706 Pk1 Loc:1733
Version 6.0 HiSQV Bases: 710

Gray line indicates quality value (QV) < 40.

Feb 27,2018 10:07AM, JST
Feb 27,2018 10:22AM, JST
Spacing:10.65 Pts/Panel1350
Plate Name: 20180227_GNP

