

RIKEN Clone ID : IRAL051C09

Vector : pDNR-LIB

Gene	ASPIN	
Accession No.	BC063114.1	2509 bp
	CDS	1155 bp

● Plasmid DNA purification

Date : 180219

Culture : LB (25 ug/ml Chloramphenicol) 5 ml -> at 37 deg C over night

Date : 180220

Purification : QIAGEN Miniprep kit -> dH₂O 100 ul

● Digestion by restriction enzyme/Concentration calibration

Date : 180220

DNA concentration (O.D.): 87 ng/ul

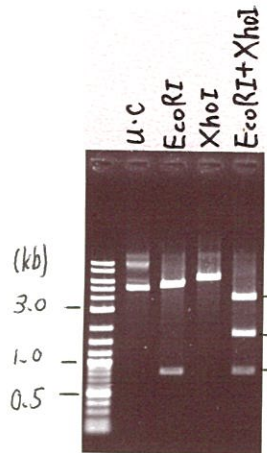
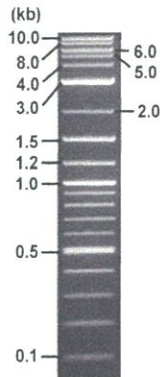
< Size of fragment expected from this clone >

DNA	1	ul
Enzyme (EcoRI + XhoI)	0.5 + 0.5	ul
Buffer H	1	ul
dH ₂ O	7	ul
Total	10	ul

EcoRI	5.6 , 0.8 kb
XhoI	6.4 kb
EcoRI + XhoI	3.9kb (Vector) 1.7, 0.8 kb

Erectrophoresis : 1% agarose gel, 1x TAE Buffer

Marker : 2-Log DNA Ladder (NEB#N3200L)



● Adjust plasmid DNA solution to 25 ng/ul

Date : 180228

DNA (87 ng/ul)	80.0	ul
10x TE	27.8	ul
dH ₂ O	170.6	ul
Total	278.4	ul

● Confirmation of the insertion sequence

Date : 180221

Primer A	T7 long
Primer B	M13 Reverse
Primer C	poly(A) region primer #0
List of Sequencing Primers	http://dna.brc.riken.jp/en/GNPclone3en.html

● Shipping

Conc. : 25 ng/ul, Volume : 40 ul

Conc. : ~~ng/ul~~, Volume : ~~ul~~



APPROVED BY : <http://dna.brc.riken.jp/index.html>

S/N G:128 A:167 T:154 C:19
KB.bcp
KB 1.4.1.8 Cap:12

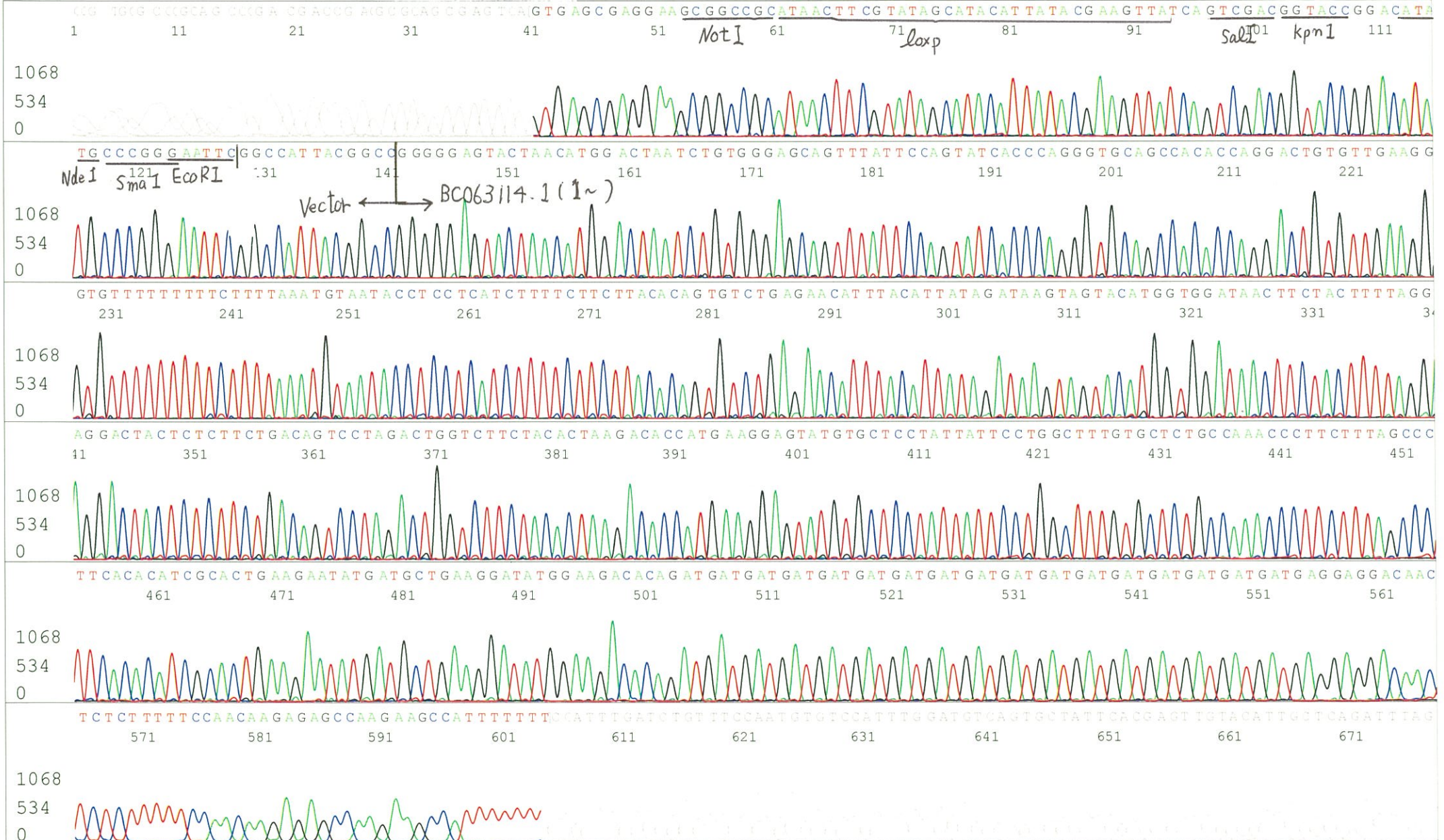
Primer A : T7 long

5' CGCCAAGCTCTAATACGACTCACTATAGGG 3'

IRAL051C09_A8B9_2_T7long
KB_3500_POP7_BDTv3.mob
Pts 1672 to 8455 Pk1 Loc:1640
Version 6.0 HiSQV Bases: 719

Gray line indicates quality value
(QV) < 40.

Feb 21,2018 05:44PM, JST
Feb 21,2018 06:00PM, JST
Spacing:10.35 Pts/Panel1350
Plate Name: 20180221_GNP



S/N G:141 A:210 T:231 C:193
KB.bcp
KB 1.4.1.8 Cap:15

Primer B : M13 Reverse
5' AAACAGCTATGACCATGTTCA 3'

IRAL051C09_A8B9_2_M13reverse
KB_3500_POP7_BDTv3.mob
Pts 1653 to 8372 Pk1 Loc:1621
Version 6.0 HiSQV Bases: 704

Gray line indicates quality value
(QV) < 40.

Feb 21, 2018 05:44PM, JST
Feb 21, 2018 06:00PM, JST
Spacing: 10.28 Pts/Panel 1350
Plate Name: 20180221_GNP

