

RIKEN Clone ID : IRAL050012

Lot#: 7566_A4Gv

Vector : pOTB7

Gene	PTCHD1	
Accession No.	BC062344.1	2330 bp
	<i>CDS</i>	771 bp
		1..2330
		410..1180

● Plasmid DNA purification

Date : 140805

Culture : LB (25 ug/ml Chloramphenicol) 5 ml -> at 37 deg C over night

Date : 140806

Purification : QIAGEN Miniprep kit -> dH₂O 100 ul

● Digestion by restriction enzyme/Concentration calibration

Date : 140806

DNA concentration (O.D.): 220 ng/ul

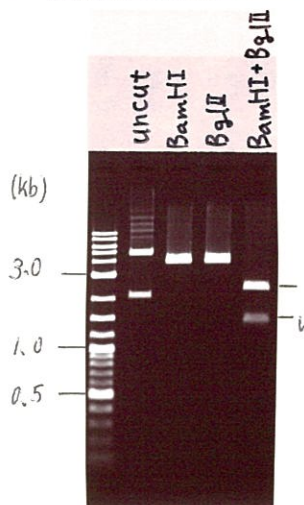
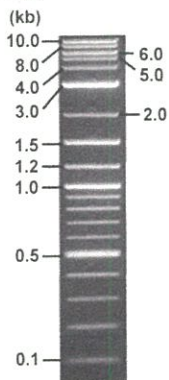
< Size of fragment expected from IRAL050012 >

DNA	0.2	ul
Enzyme (BamHI + BglII)	0.5 + 0.5	ul
Buffer H	1	ul
dH ₂ O	7.8	ul
Total	10	ul

BamHI	4131 bp
BglII	4131 bp
BamHI + BglII	1615bp (Vector) 2516 bp

Erectrophoresis : 1% agarose gel, 1x TAE Buffer

Marker : 2-Log DNA Ladder (NEB#N3200L)



● Adjust plasmid DNA solution to 25 ng/ul

Date : 140811

DNA (<u>220</u> ng/ul)	86.0	ul
10x TE	75.7	ul
dH ₂ O	595.1	ul
Total	756.8	ul

● Confirmation of the insertion sequence

Date : 140808

Primer A	pOTB7_F
Primer B	pOTB7_R
Primer C	poly(A) region primer #0
List of Sequencing Primers	http://dna.brc.riken.jp/en/GNPclone3en.html

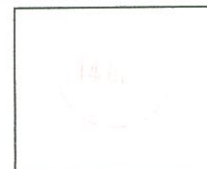
● Shipping

Conc. : 25 ng/ul, Volume : 40 ul

~~Conc. : ng/ul, Volume : ul~~

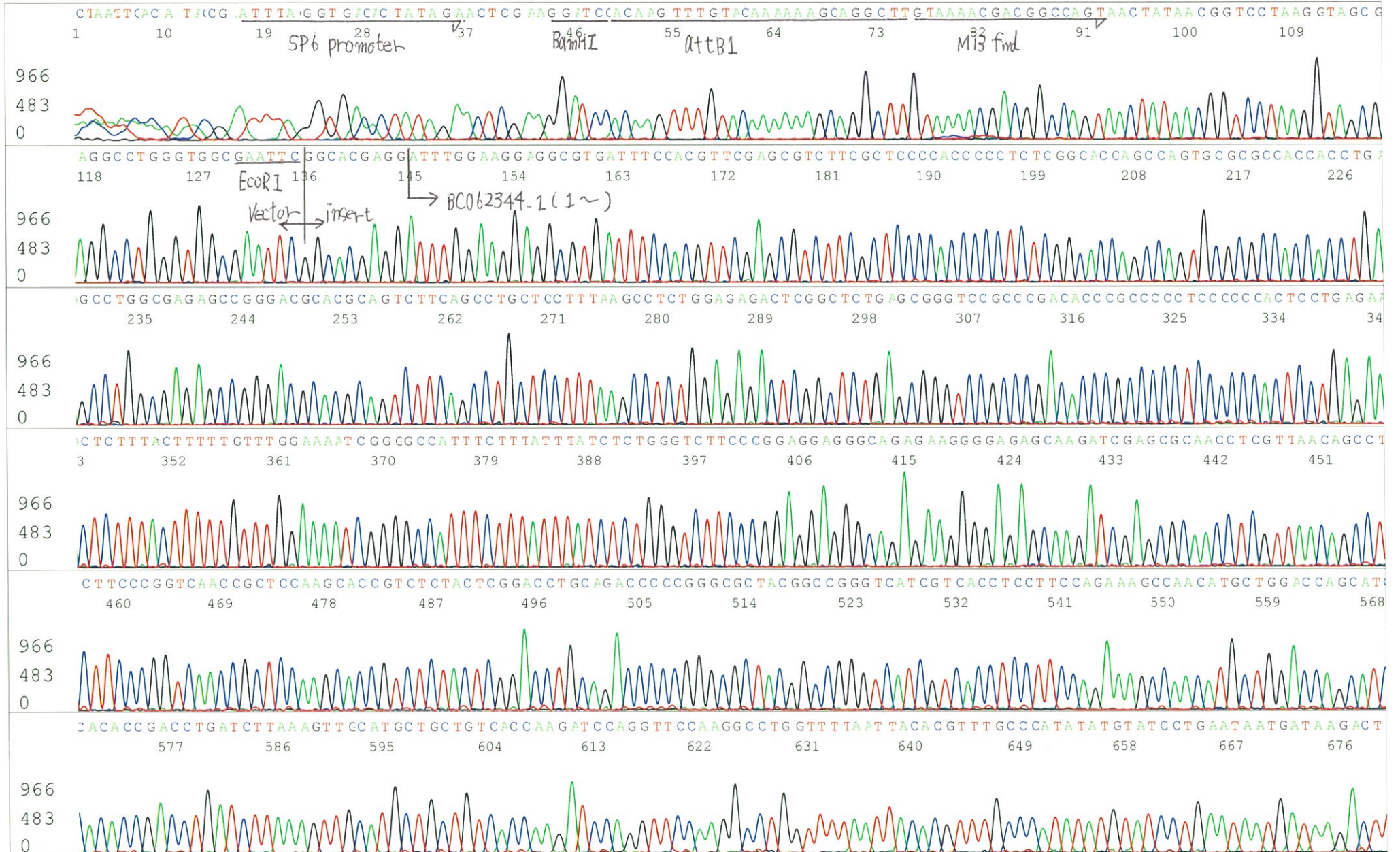
APPROVED BY :

<http://dna.brc.riken.jp/index.html>

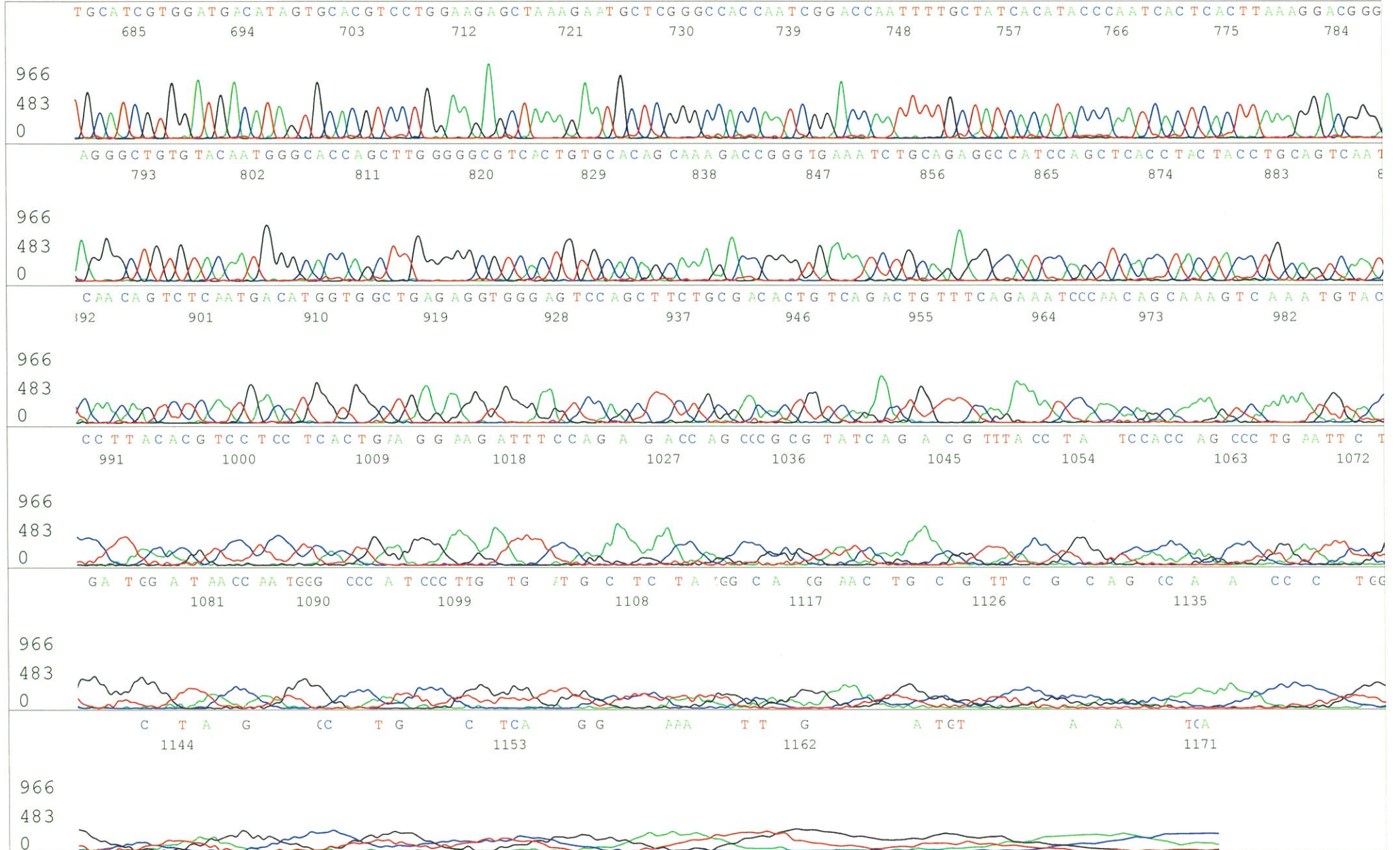


S/N G:33 A:40 T:30 C:52
KB.bcp
KB 1.4.1.8 Cap:13

Primer A: pOTB7-F
5' AACGCGGCTACAATTAATACATAACC 3'

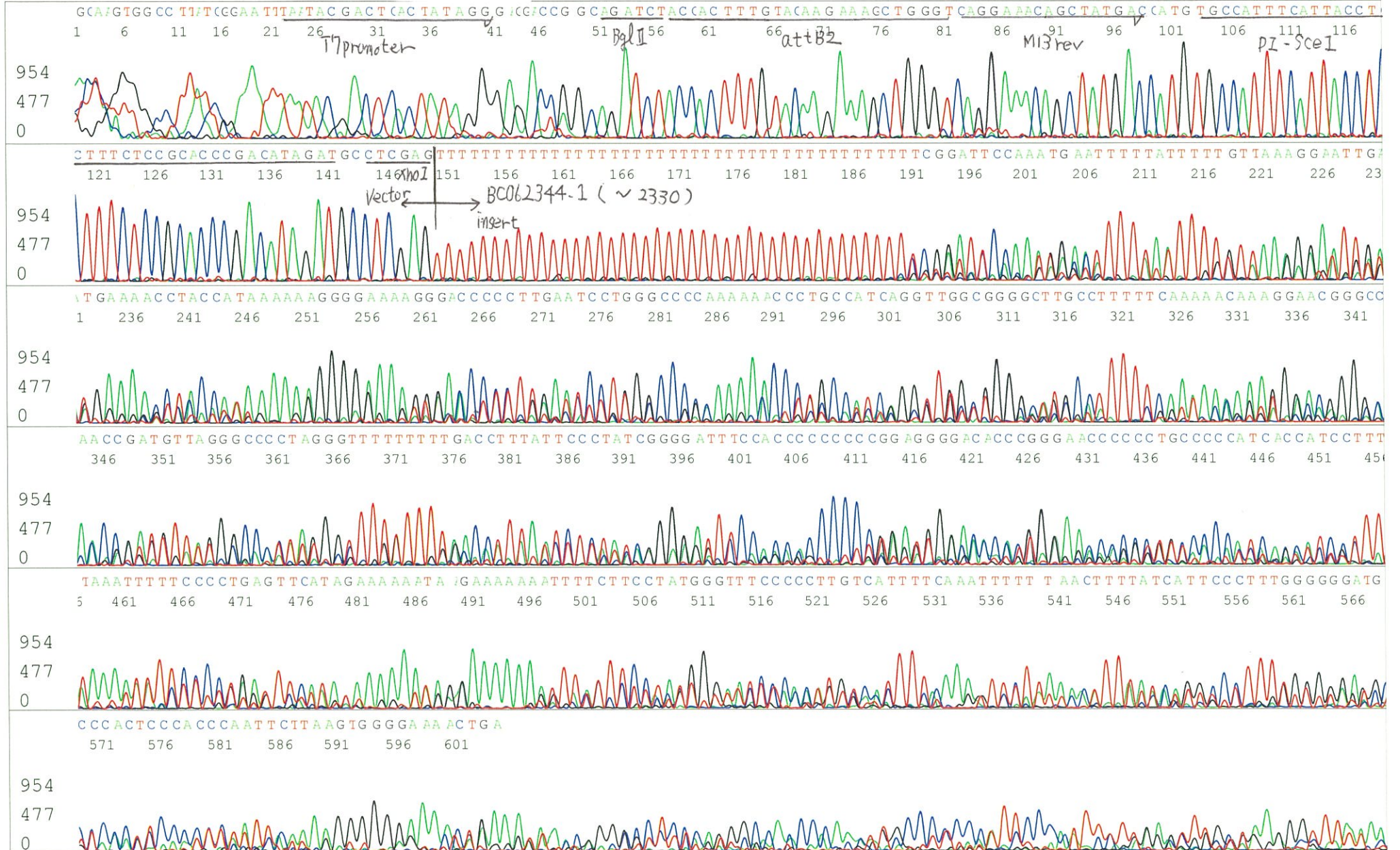


S/N G:33 A:40 T:30 C:52
KB.bcp
KB 1.4.1.8 Cap:13

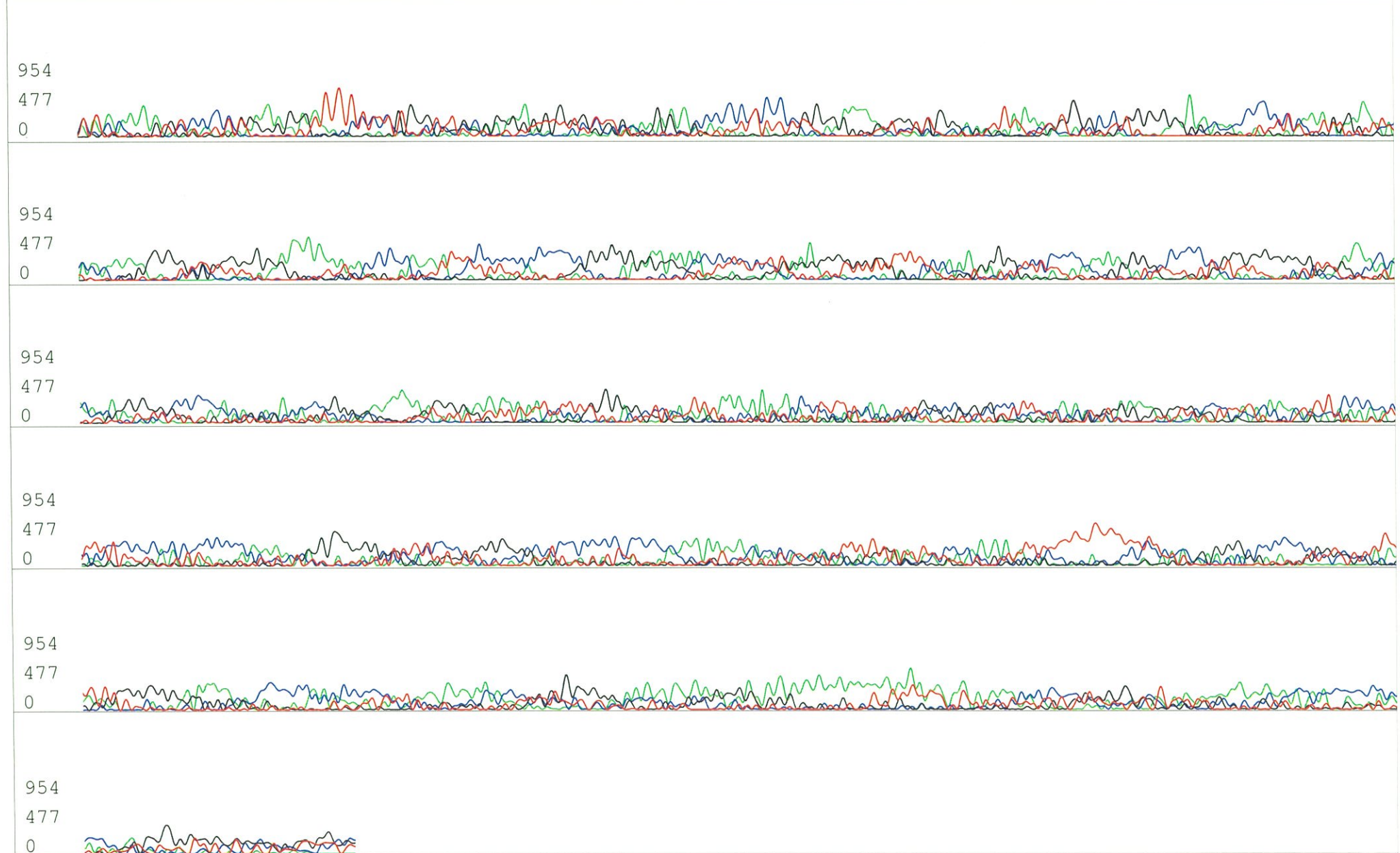


S/N G:8 A:10 T:10 C:10
KB.bcp
KB 1.4.1.8 Cap:16

Primer B: pOTB7-R
5' GTACTGCAGCCGATTCATTAATGC 3'



S/N G:8 A:10 T:10 C:10
KB.bcp
KB 1.4.1.8 Cap:16



S/N G:94 A:76 T:62 C:60

Primer C : Poly(A) region primer #0

IRAL050012_A4Gv_III_GNPmixture

Aug 08,2014 01:29PM, JST

KB.bcp

KB_3500_POP7_BDTv3.mob

Aug 08,2014 01:56PM, JST

KB 1.4.1.8 Cap:19

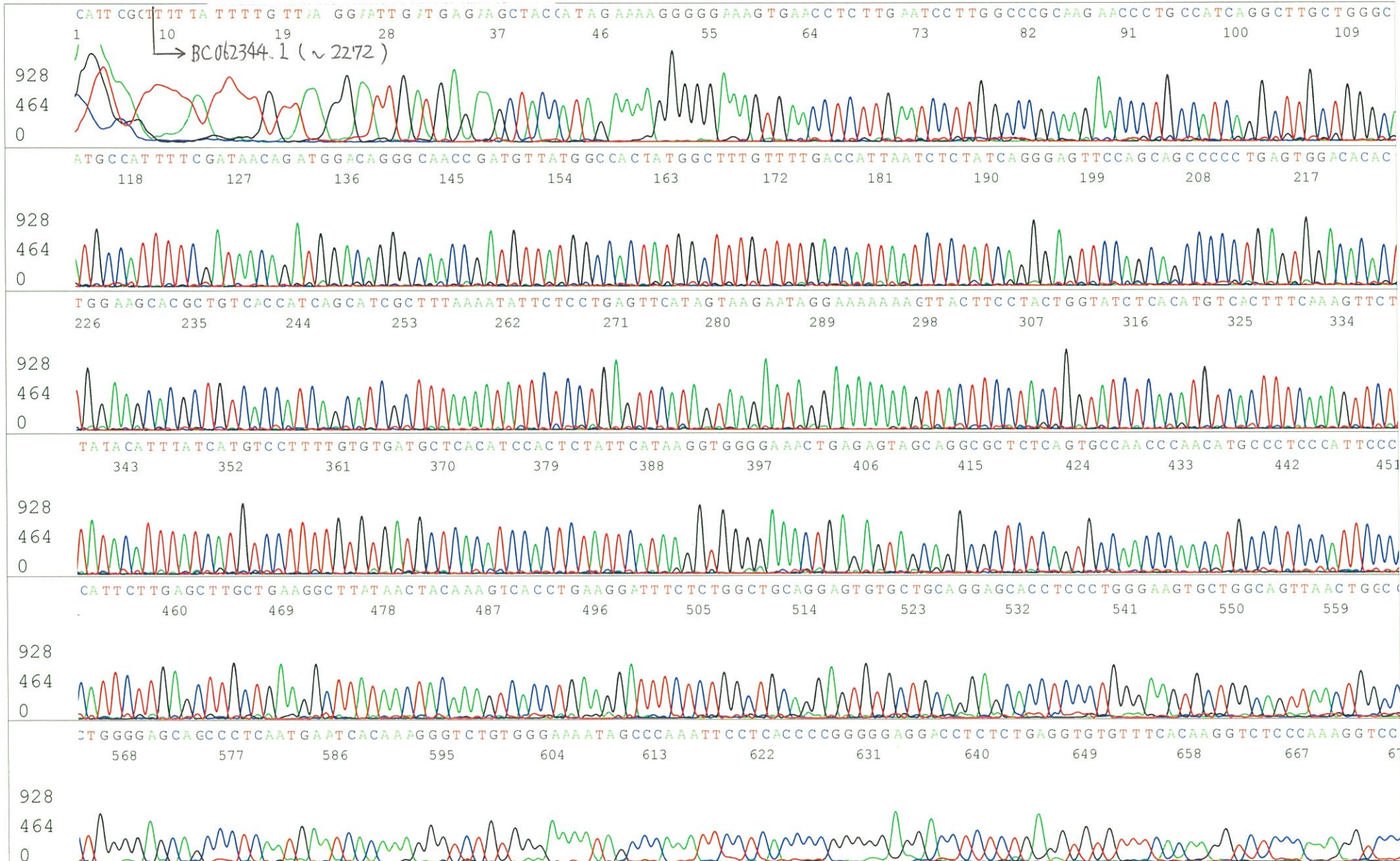
5' TTTTTTTTTTTTTTTTTTTTTTNNN 3'

Pts 1372 to 13043 Pk1 Loc:1349

Spacing:11.61 Pts/Panel1350

Version 5.4 HiSQV Bases: 888

Plate Name: 20140808_GNP



S/N G:94 A:76 T:62 C:60
KB.bcp
KB 1.4.1.8 Cap:19

