

RIKEN Clone ID : IRAL050N13

Lot#: 7566_A6Bh

Vector : pOTB7

Gene	GRK5	
Accession No.	BC064506.1	2362 bp
	CDS	1773 bp

● Plasmid DNA purification

Date : 160218

Culture : LB (25 ug/ml Chloramphenicol) 5 ml -> at 37 deg C over night

Date : 160219

Purification : QIAGEN Miniprep kit -> dH₂O 100 ul

● Digestion by restriction enzyme/Concentration calibration

Date : 160219

DNA concentration (O.D.): 155 ng/ul

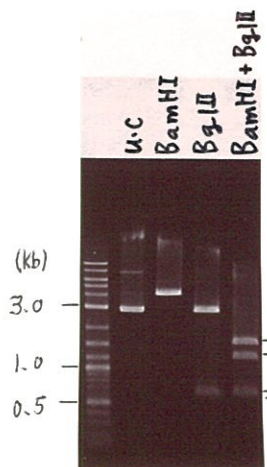
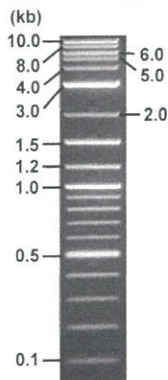
< Size of fragment expected from this clone >

DNA	0.65	ul
Enzyme (BamHI + BglII)	0.5 + 0.5	ul
Buffer H	1	ul
dH ₂ O	7.35	ul
Total	10	ul

BamHI	4.1 kb
BglII	2.8, 0.68, 0.62 kb
BamHI + BglII	1.6kb (Vector) 1.2, 0.68, 0.62 kb

Erectrophoresis : 1% agarose gel, 1x TAE Buffer

Marker : 2-Log DNA Ladder (NEB#N3200L)



● Adjust plasmid DNA solution to 25 ng/ul

Date : 160229

DNA (<u>155</u> ng/ul)	<u>83.0</u>	ul
10x TE	<u>57.5</u>	ul
dH ₂ O	<u>380.1</u>	ul
Total	<u>514.6</u>	ul

● Confirmation of the insertion sequence

Date : 160229

Primer A	pOTB7_F
Primer B	pOTB7_R
Primer C	-
List of Sequencing Primers	http://dna.brc.riken.jp/en/GNPclone3en.html

● Shipping

Conc. : 25 ng/ul, Volume : 40 ul
 Conc. : ng/ul, Volume : ul

APPROVED BY :

<http://dna.brc.riken.jp/index.html>



S/N G:280 A:231 T:154 C:200

Primer A: pOTB7-F

IRAL050N13_A6Bh_3_pOTB7_F

Feb 26,2016 09:52AM, JST

KB.bcp

5' AACGCGGCTACAATTAATACATAACC 3'

KB_3500_POP7_BDTv3.mob

Feb 26,2016 10:18AM, JST

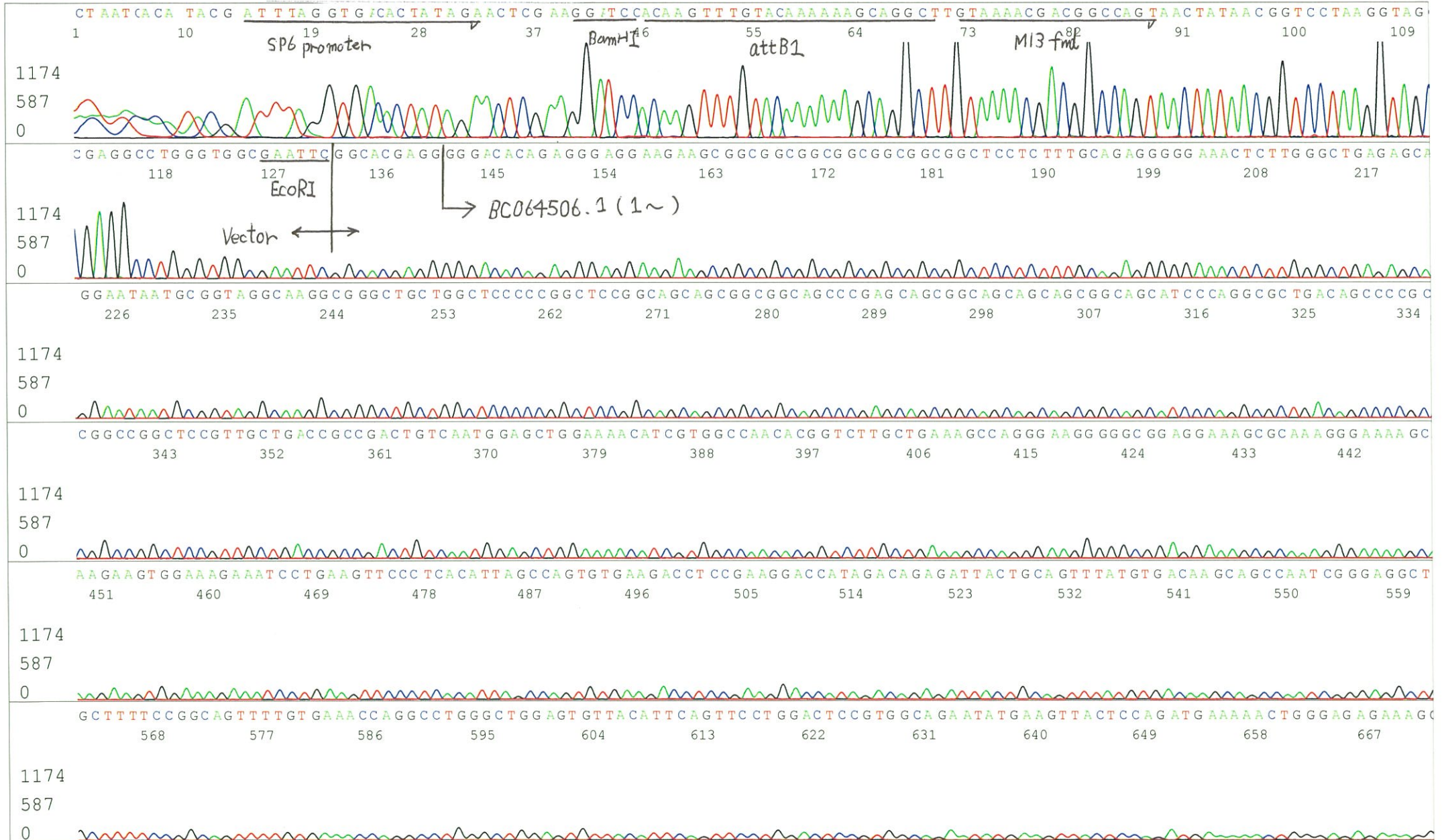
KB 1.4.1.8 Cap:1

Pts 1364 to 12933 Pk1 Loc:1341

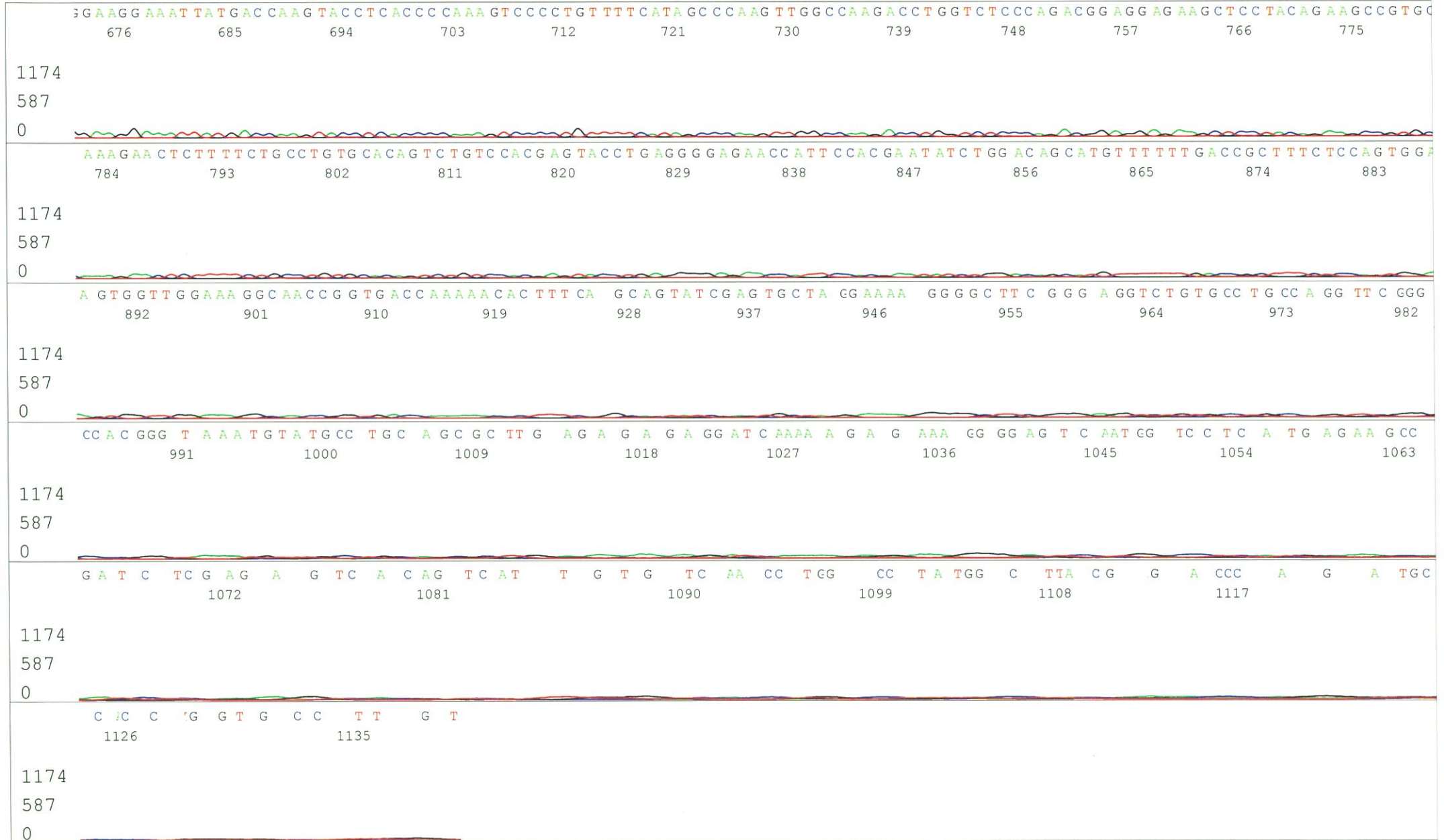
Spacing:11.47 Pts/Panel1350

Version 6.0 HiSQV Bases: 984

Plate Name: 20160226_GNP



S/N G:280 A:231 T:154 C:200
KB.bcp
KB 1.4.1.8 Cap:1



S/N G:18 A:17 T:18 C:17
KB.bcp
KB 1.4.1.8 Cap:2

Primer B: pOTB7-R

5' GTACTGCAGCCGATTCATTAATGC 3'

IRAL050N13_A6Bh_3_pOTB7_R_A02_02

IRAL050N13_A6Bh_3_pOTB7_R

KB_3500_POP7_BDTv3.mob

Pts 1414 to 13401 Pk1 Loc:1391

Version 6.0 HiSQV Bases: 727

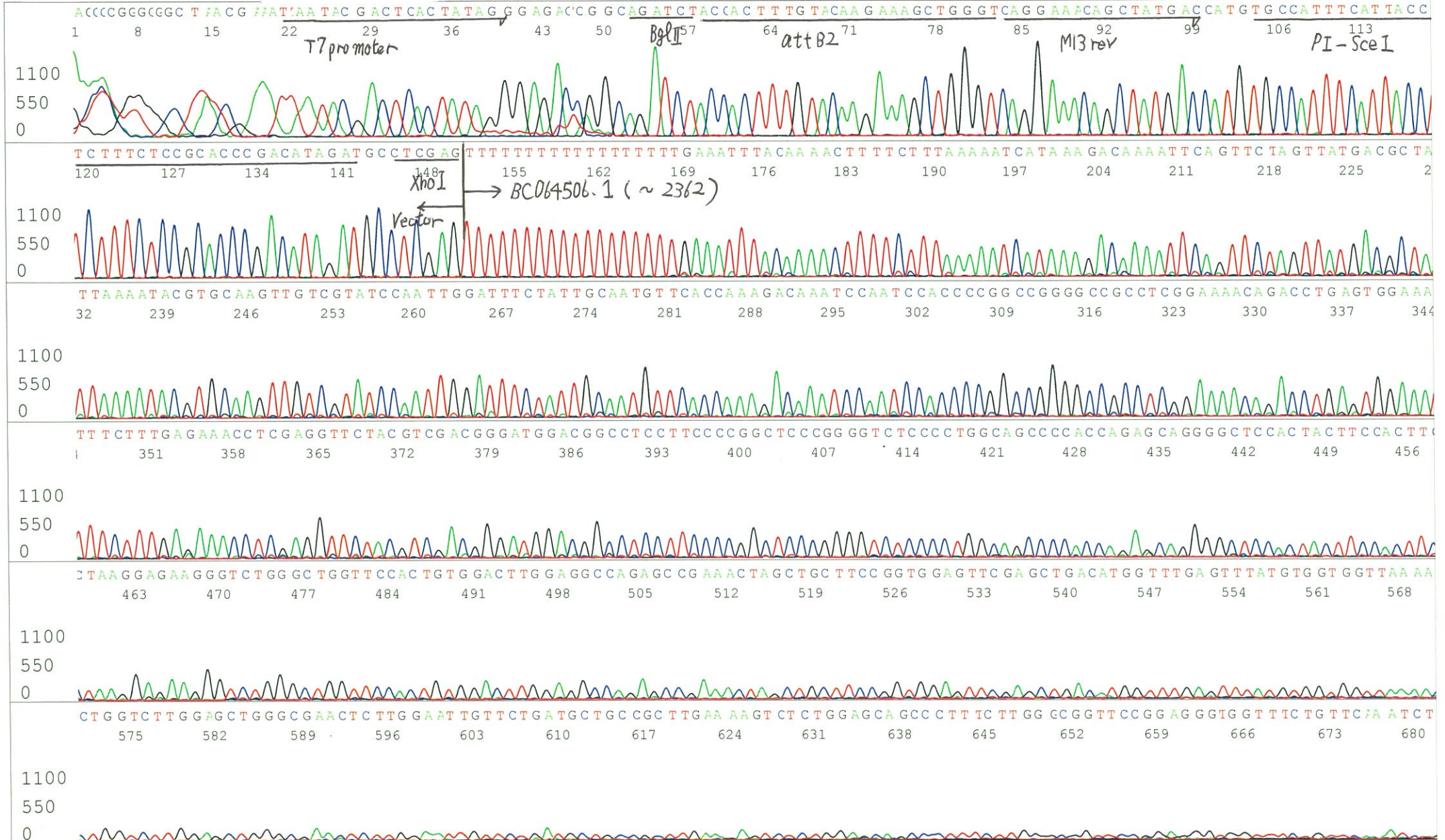
Inst Model/Name 3500/3500 Instrument

Feb 29,2016 09:51AM, JST

Feb 29,2016 10:30AM, JST

Spacing:11.86 Pts/Panel1350

Plate Name: 20160229_mix



S/N G:18 A:17 T:18 C:17
KB.bcp
KB 1.4.1.8 Cap:2

