

**RIKEN\_Clone\_ID : IRAL050G24**

Lot#: 7566\_B2Ab

Vector : pOTB7

Gene	SFRS15	
Accession No.	BC064990.1	3882 bp
	CDS	3444 bp

● Plasmid DNA purification

Date : 22.01.12

Culture : LB (25 ug/ml Chloramphenicol) 5 ml -> at 37 deg C over night

Date : 22.01.13

Purification : QIAGEN Miniprep kit -> dH<sub>2</sub>O 100 ul

● Digestion by restriction enzyme/Concentration calibration

Date : 22.01.13

DNA concentration (O.D.): 326 ng/ul

< Size of fragment expected from this clone >

DNA	0.3	ul
Enzyme (BamHI + BglII)	0.5 + 0.5	ul
Buffer H	1	ul
dH <sub>2</sub> O	7.7	ul
Total	10	ul

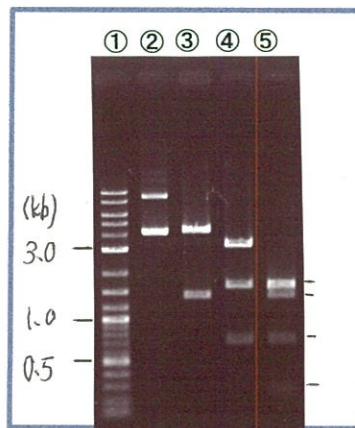
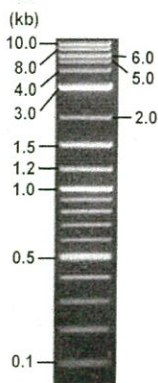
BamHI 4.5, 1.4 kb

BglII 3.3, 1.7, 0.7, <0.1, <0.1 kb

BamHI + BglII 1.6kb (Vector) 1.7, 1.4, 0.7, 0.3, <0.1, <0.1 kb

Electrophoresis : 1% agarose gel, 1x TAE Buffer

Marker : 2-Log DNA Ladder (NEB#N3200L)



- ①:Marker
- ②:uncut
- ③:BamHI
- ④:BglII
- ⑤:BamHI + BglII

● Adjust plasmid DNA solution to 25 ng/ul

Date : 22.01.18

● Confirmation of the insertion sequence

Date : 22, 01, 17

DNA ( 326 ng/ul)	84.0	ul
10x TE	109.5	ul
dH <sub>2</sub> O	901.8	ul
Total	1095.3	ul

Primer A	pOTB7_F
Primer B	pOTB7_R
Primer C	-
List of Sequencing Primers	<a href="http://dna.brc.riken.jp/en/GNPclone3en.html">http://dna.brc.riken.jp/en/GNPclone3en.html</a>

● Shipping

Conc. : 25 ng/ul, Volume : 40 ul  
 Conc. : ~~ng/ul~~, Volume : ~~ul~~

APPROVED BY :   
<http://dna.brc.riken.jp/index.html>

S/N G:284 A:286 T:169 C:293  
KB.bcp  
KB 1.4.1.8 Cap:16

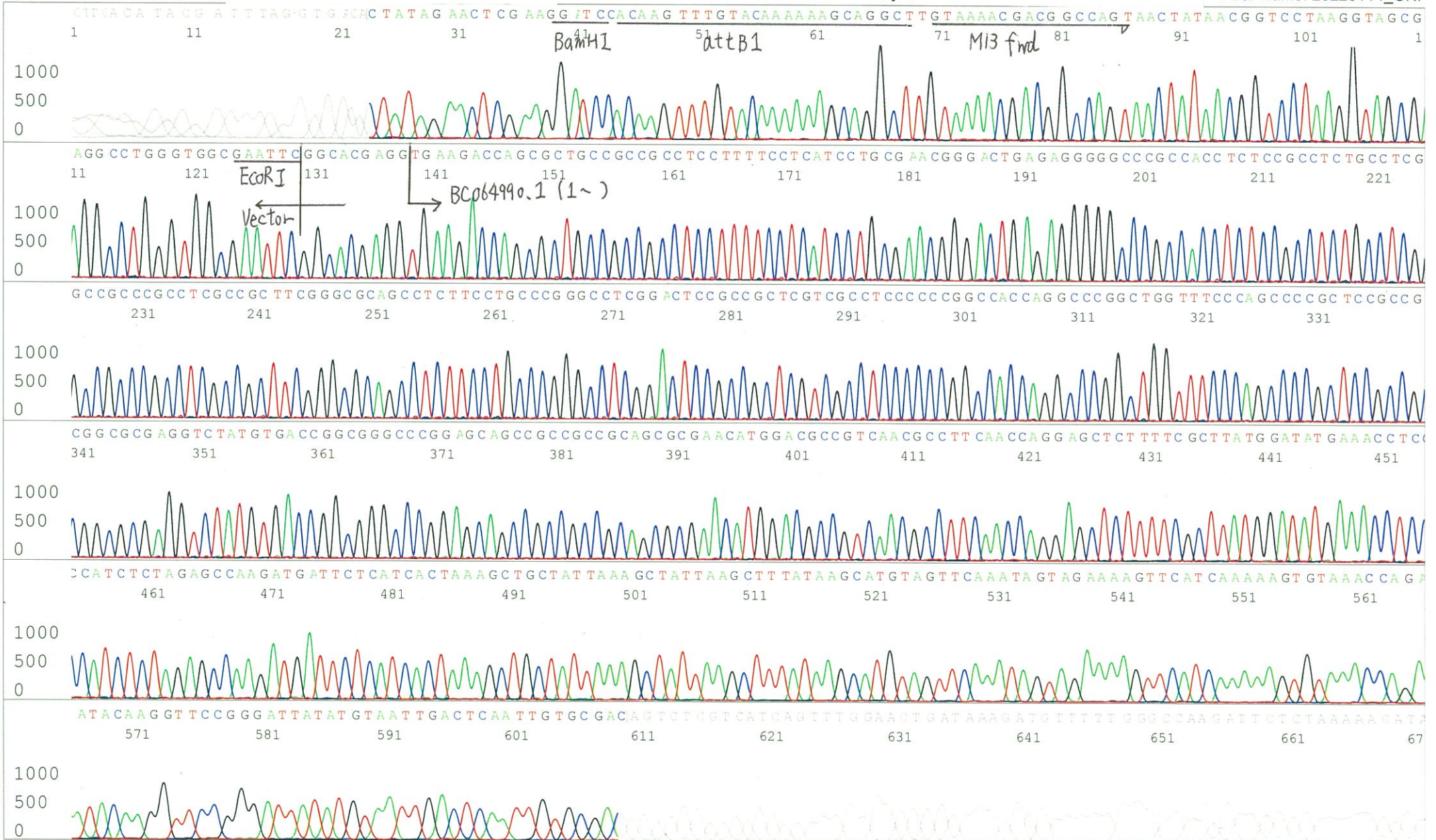
Primer A: pOTB7-F

5' AACGCGGCTACAATTAATACATAACC 3'

7566\_IRAL050G24\_B2Ab\_pOTB7\_F\_F01\_16\_ABI24  
7566\_IRAL050G24\_B2Ab\_pOTB7\_F  
KB\_3500\_POP7\_BDTv3.mob  
Pts 1862 to 8706 Pk1 Loc:1830  
Version 6.0 HiSQV Bases: 672

Gray line indicates quality value  
(QV) < 40.

Inst Model/Name 3500/3500 Instrument  
Jan 14,2022 10:32AM, JST  
Jan 14,2022 10:47AM, JST  
Spacing:10.59 Pts/Panel1350  
Plate Name: 20220114\_GNP





S/N G:67 A:87 T:58 C:58  
KB.bcp  
KB 1.4.1.8 Cap:19

Primer B: pOTB7-R  
5' GTACTGCAGCCGATTCATTAATGC 3'

Gray line indicates quality value  
(QV) < 40.

