

RIKEN Clone ID : IRAL047D06

Lot#: 7566_B0G6

Vector : pOTB7

Gene	FAM84A	
Accession No.	BC052284.1	2305 bp
	CDS	879 bp

● Plasmid DNA purification

Date : 20.07.07

Culture : LB (25 ug/ml Chloramphenicol) 5 ml -> at 37 deg C over night

Date : 20.07.09

Purification : QIAGEN Miniprep kit -> dH₂O 100 ul

● Digestion by restriction enzyme/Concentration calibration

Date : 20.07.09

DNA concentration (O.D.): 333 ng/ul

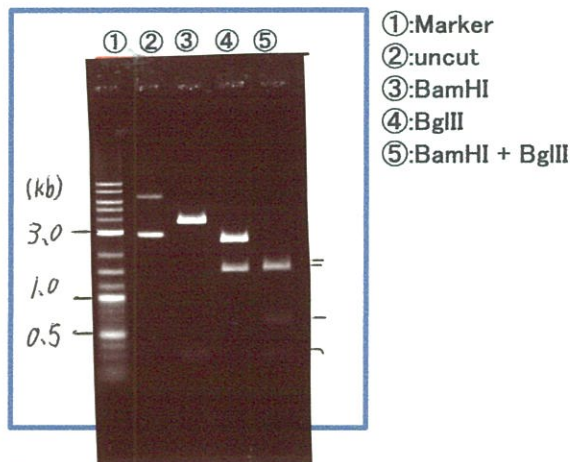
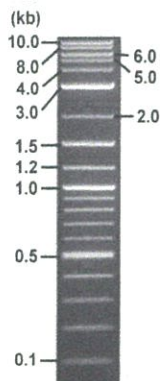
< Size of fragment expected from this clone >

DNA	<u>0.3</u> ul
Enzyme (BamHI + BglII)	0.5 + 0.5 ul
Buffer H	1 ul
dH ₂ O	<u>7.7</u> ul
Total	10 ul

BamHI	3.8 , 0.3 kb
BglII	2.6 , 1.5 kb
BamHI + BglII	1.6kb (Vector) 1.5, 0.7, 0.3 kb

Erectrophoresis : 1% agarose gel, 1x TAE Buffer

Marker : 2-Log DNA Ladder (NEB#N3200L)



● Adjust plasmid DNA solution to 25 ng/ul

Date : 20.08.09

● Confirmation of the insertion sequence

Date : 20.07.10

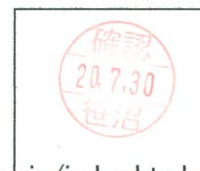
DNA (<u>333</u> ng/ul)	<u>90.0</u> ul
10x TE	<u>119.8</u> ul
dH ₂ O	<u>989.0</u> ul
Total	<u>1198.8</u> ul

Primer A	pOTB7_F
Primer B	pOTB7_R
Primer C	-
List of Sequencing Primers	http://dna.brc.riken.jp/en/GNPclone3en.html

● Shipping

Conc. : 25 ng/ul, Volume : 40 ul

Conc. : ng/ul, Volume : ul

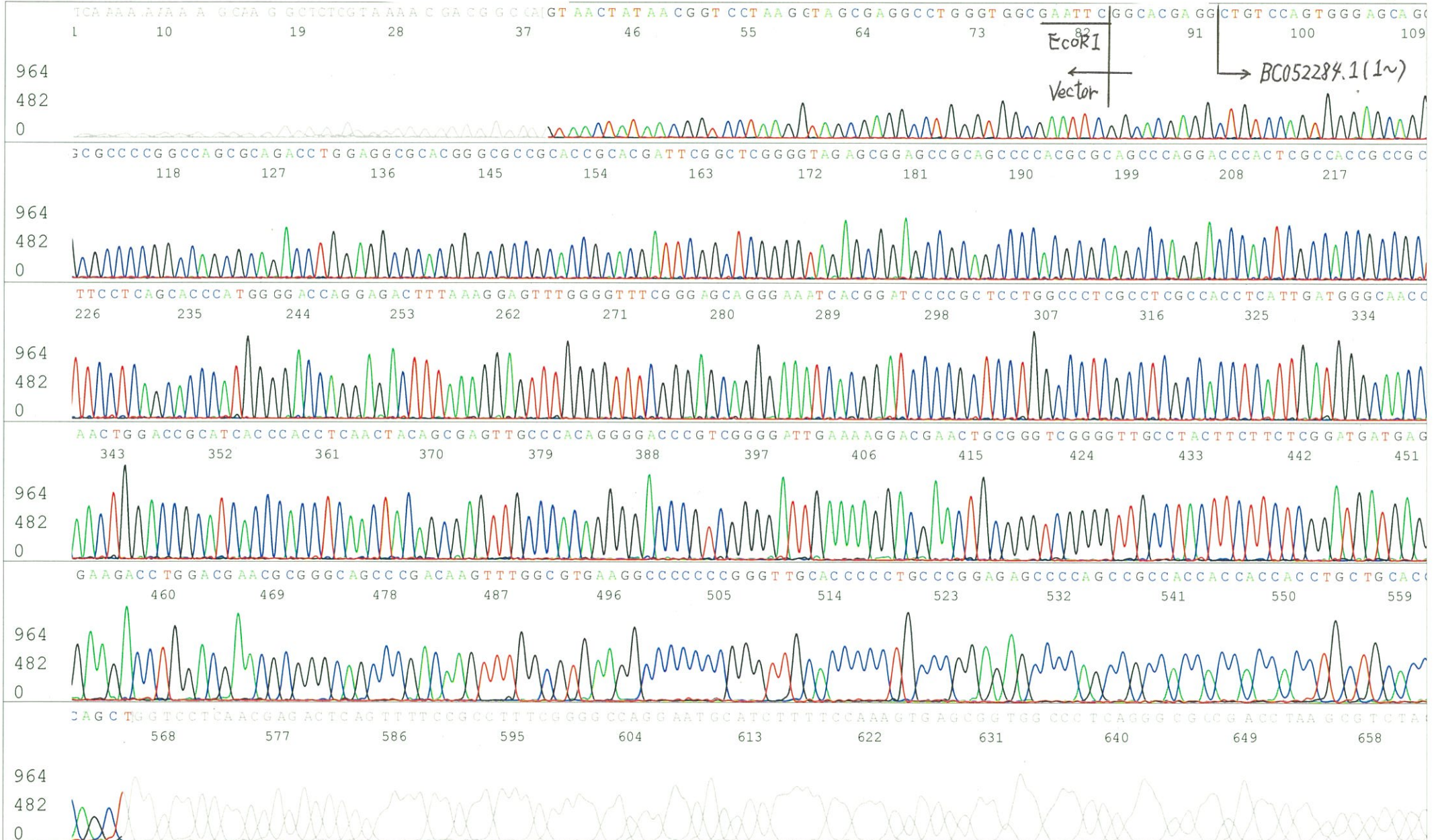


APPROVED BY : <http://dna.brc.riken.jp/index.html>

S/N G:86 A:73 T:39 C:105
KB.bcp
KB 1.4.1.8 Cap:7

Primer A: pOTB7-F
5' AACGCGGCTACAATTAATACATAACC 3'

Gray line indicates quality value
(QV) < 40.



S/N G:202 A:212 T:154 C:275
KB.bcp
KB 1.4.1.8 Cap:10

Primer B: pOTB7-R
5' GTACTGCAGCCGATTTCATTAATGC 3'

Gray line indicates quality value
(QV) < 40.

