

**RIKEN Clone ID : IRAL039008**

Lot#: 7566\_B3Bd

Vector : pOTB7

Gene	SIRT7	
Accession No.	BC017305.2	1713 bp
	<i>CDS</i>	1203 bp

● Plasmid DNA purification

Date : 23.02.14

Culture : LB (25 ug/ml Chloramphenicol) 5 ml -> at 37 deg C over night

Date : 23.02.15

Purification : QIAGEN Miniprep kit -> dH<sub>2</sub>O 100 ul

● Digestion by restriction enzyme/Concentration calibration

Date : 23.02.15

DNA concentration (O.D.): 112 ng/ul

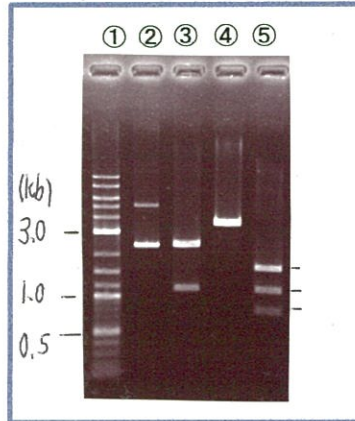
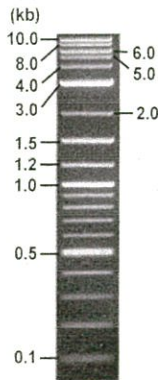
< Size of fragment expected from this clone >

DNA	0.9	ul
Enzyme (BamHI + BglII)	0.5 + 0.5	ul
Buffer H	1	ul
dH <sub>2</sub> O	7.1	ul
Total	10	ul

BamHI	2.4, 1.1	kb
BglII	3.5	kb
BamHI + BglII	1.6kb (Vector)	1.1, 0.8 kb

Electrophoresis : 1% agarose gel, 1x TAE Buffer

Marker : 2-Log DNA Ladder (NEB#N3200L)



- ①:Marker
- ②:uncut
- ③:BamHI
- ④:BglII
- ⑤:BamHI + BglII

● Adjust plasmid DNA solution to 25 ng/ul

Date : 23.02.17

● Confirmation of the insertion sequence

Date : 23.02.16

DNA ( 112 ng/ul)	82.0	ul
10x TE	36.7	ul
dH <sub>2</sub> O	248.6	ul
Total	367.3	ul

Primer A	pOTB7_F
Primer B	pOTB7_R
Primer C	-
List of Sequencing Primers	<a href="http://dna.brc.riken.jp/en/GNPclone3en.html">http://dna.brc.riken.jp/en/GNPclone3en.html</a>

● Shipping

Conc. : 25 ng/ul, Volume : 40 ul

Conc. : ~~ng/ul~~, Volume : ~~ul~~

APPROVED BY :

<http://dna.brc.riken.jp/index.html>



S/N G:378 A:362 T:136 C:232

Primer A: pOTB7-F

7566\_IRAL039008\_B3Bd\_3\_pOTB7\_F

KB\_3500\_POP7\_BDTv3.mob

Gray line indicates quality value

Feb 16,2023 02:23PM, JST

KB.bcp

5' AACGCGGCTACAATTAATACATAACC 3'

Pts 1478 to 13184 Pk1 Loc:1455

Version 6.0 HiSQV Bases: 858

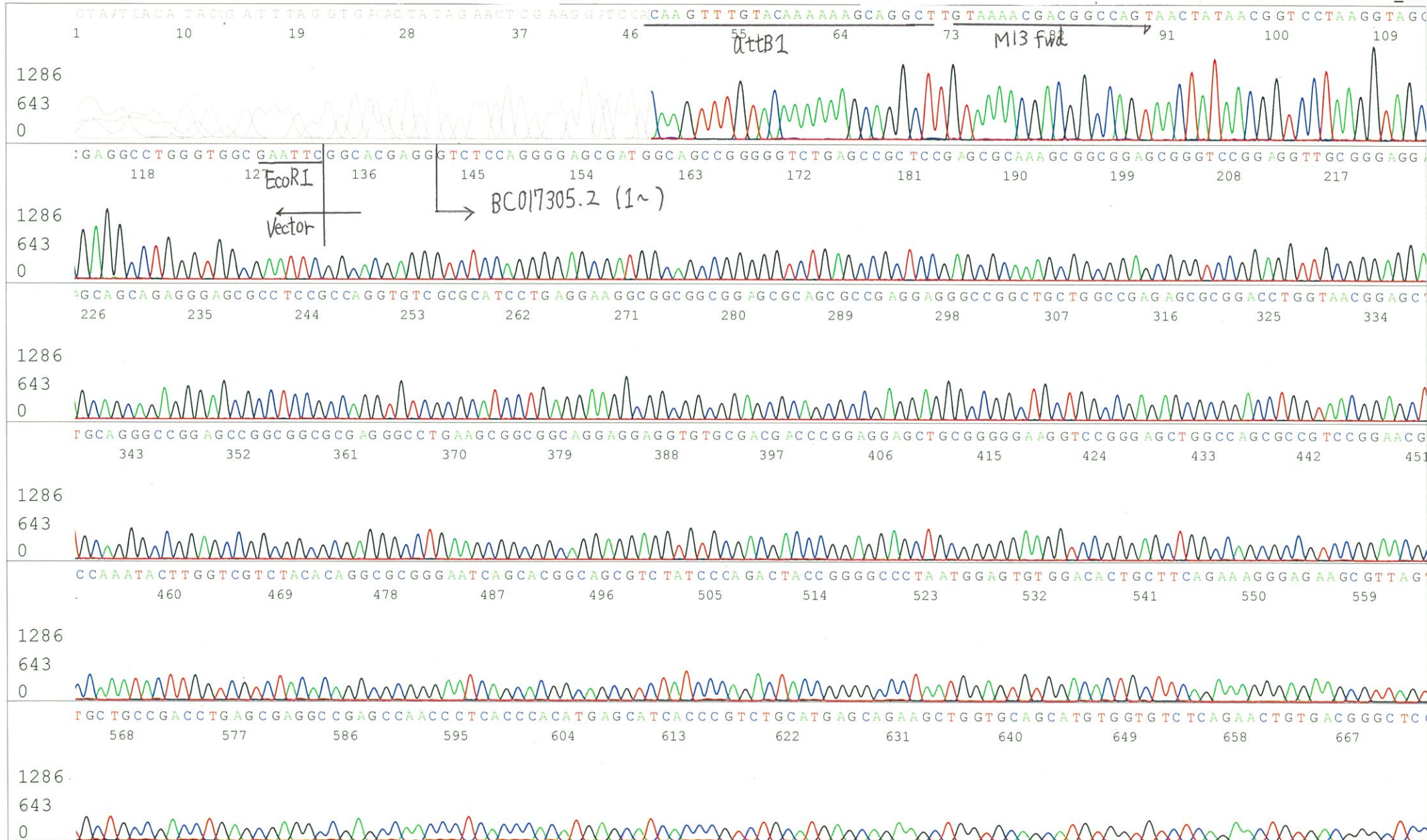
(QV) < 40.

Feb 16,2023 02:50PM, JST

KB 1.4.1.8 Cap:1

Spacing:11.8 Pts/Panel1350

Plate Name: 20230216\_mix



S/N G:88 A:136 T:96 C:138

Primer B: pOTB7-R

7566\_IRAL039008\_B3Bd\_3\_pOTB7\_R

KB\_3500\_POP7\_BDTv3.mob

Gray line indicates quality value

Feb 15,2023 03:21PM, JST

KB.bcp

5' GTACTGCAGCCGATTCATTAATGC 3'

Pts 1526 to 11987 Pk1 Loc:1509

(QV) < 40.

Feb 15,2023 03:45PM, JST

KB 1.4.1.8 Cap:2

Version 6.0 HiSQV Bases: 786

Spacing:13.37 Pts/Panel1350

Plate Name: 20230215\_GNP

