

RIKEN Clone ID : IRAL039A06

Lot#: 7566_A6Ge

Vector : pOTB7

Gene	SH3BP5L	
Accession No.	BC017254.2	2693 bp
	<i>CDS</i>	1182 bp

● Plasmid DNA purification

Date : 160714

Culture : LB (25 ug/ml Chloramphenicol) 5 ml -> at 37 deg C over night

Date : 160715

Purification : QIAGEN Miniprep kit -> dH₂O 100 ul

● Digestion by restriction enzyme/Concentration calibration

Date : 160715

DNA concentration (O.D.): 199 ng/ul

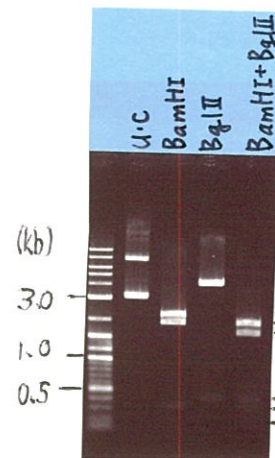
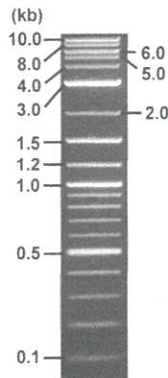
< Size of fragment expected from this clone >

DNA	0.5	ul
Enzyme (BamHI + BglII)	0.5 + 0.5	ul
Buffer H		1 ul
dH ₂ O	7.5	ul
Total		10 ul

BamHI	2.2, 1.9, 0.30, 0.10 kb
BglII	4.1, 0.41 kb
BamHI + BglII	1.6kb (Vector) 1.9, 0.41, 0.30, 0.15, 0.10 kb

Erectrophoresis : 1% agarose gel, 1x TAE Buffer

Marker : 2-Log DNA Ladder (NEB#N3200L)



● Adjust plasmid DNA solution to 25 ng/ul

Date : 160722

DNA (<u>199</u> ng/ul)	<u>25.0</u> ul
10x TE	<u>67.7</u> ul
dH ₂ O	<u>523.9</u> ul
Total	<u>676.6</u> ul

● Confirmation of the insertion sequence

Date : 160721

Primer A	pOTB7_F
Primer B	pOTB7_R
Primer C	-
List of Sequencing Primers	http://dna.brc.riken.jp/en/GNPclone3en.html

● Shipping

Conc. : 25 ng/μl, Volume : 40 μl

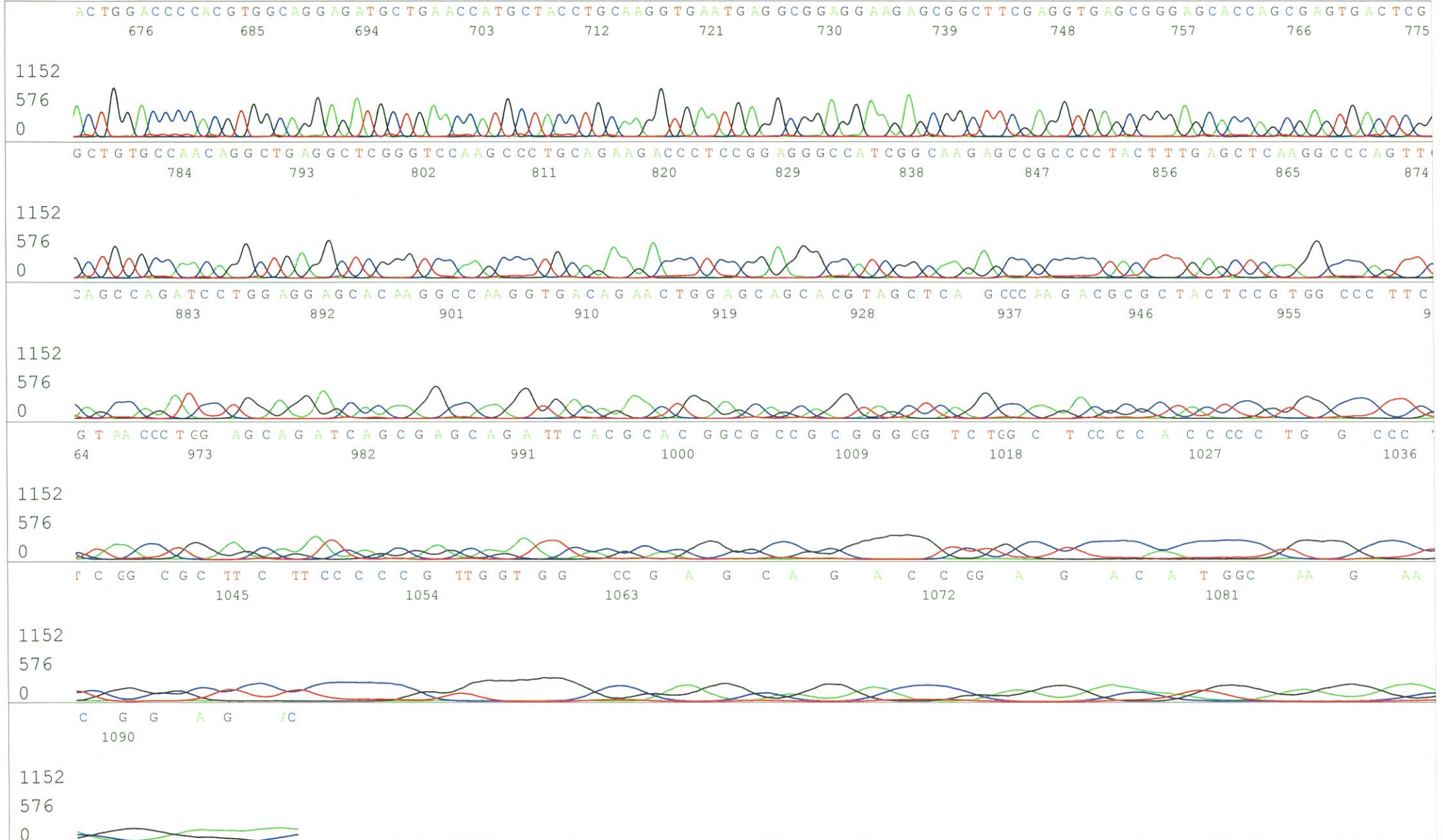
Conc. : ng/μl, Volume : μl

APPROVED BY :

<http://dna.brc.riken.jp/index.html>



S/N G:1588 A:1936 T:1132 C:1739
KB.bcp
KB 1.4.1.8 Cap:13



S/N G:1156 A:1100 T:1081 C:1500

Primer B: pOTB7-R

IRAL039A06_A6Ge_pOTB7_R

Jul 21, 2016 03:35PM, JST

KB.bcp

5' GTACTGCAGCCGATTCATTAATGC 3'

KB_3500_POP7_BDTv3.mob

Jul 21, 2016 04:13PM, JST

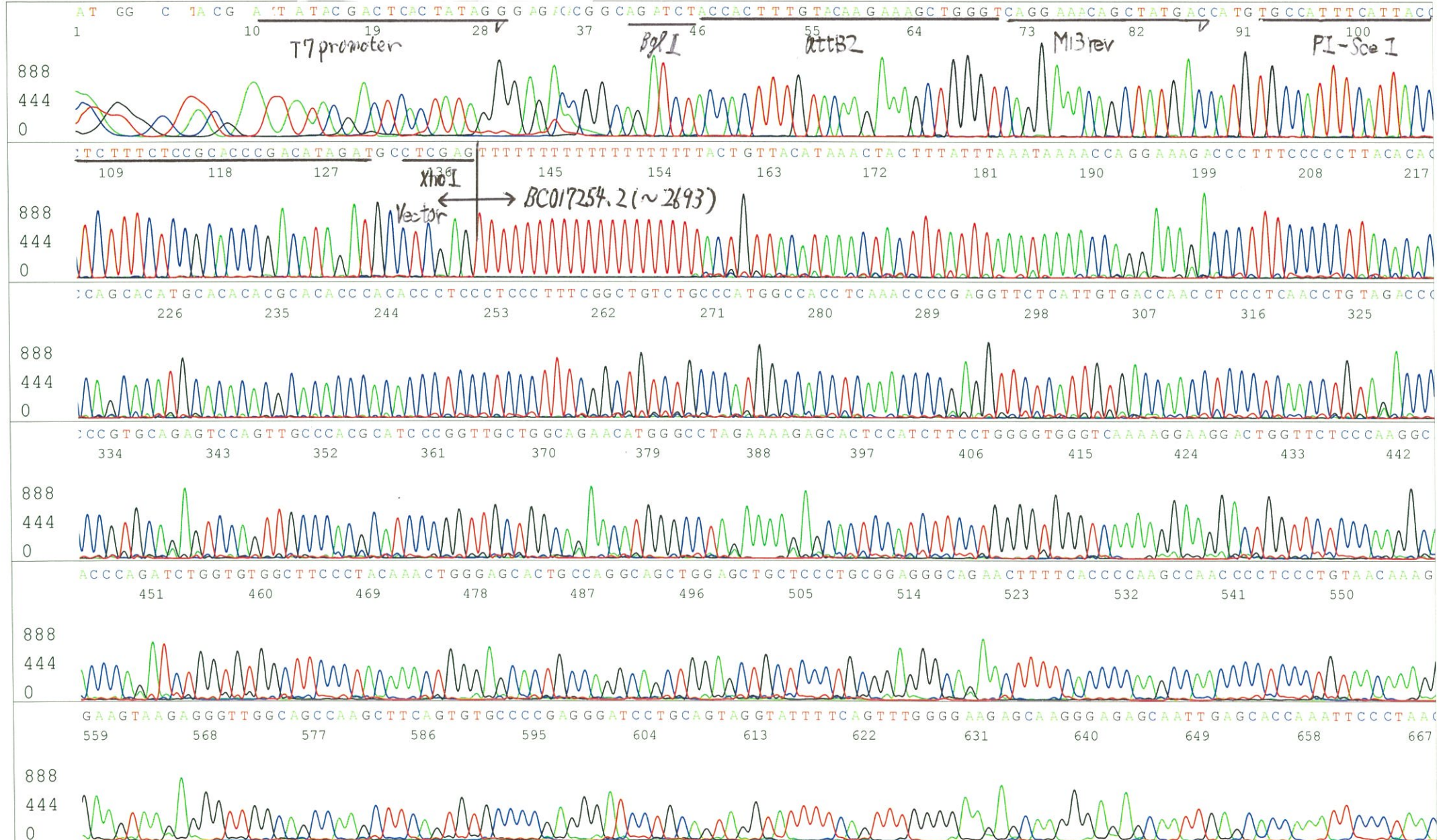
KB 1.4.1.8 Cap:16

Pts 1518 to 12700 Pk1 Loc:1495

Spacing:11.3 Pts/Panel1350

Version 6.0 HiSQV Bases: 914

Plate Name: 20160722_mix



S/N G:1156 A:1100 T:1081 C:1500
KB.bcp
KB 1.4.1.8 Cap:16

