

RIKEN Clone ID : IRAL037B10

Lot#: 7566_B1L6

Vector : pDNR-LIB

Gene	HLA-DMA	
Accession No.	BC026279.1	1079 bp
	CDS	786 bp

● Plasmid DNA purification

Date : 21.12.06

Culture : LB (25 ug/ml Chloramphenicol) 5 ml → at 37 deg C over night

Date : 21.12.07

Purification : QIAGEN Miniprep kit → dH₂O 100 ul

● Digestion by restriction enzyme/Concentration calibration

Date : 21.12.07

DNA concentration (O.D.): 192 ng/ul

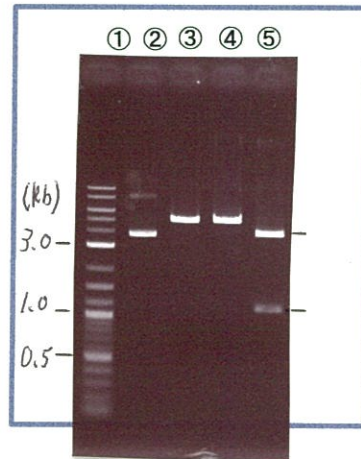
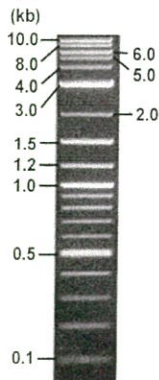
< Size of fragment expected from this clone >

DNA	0.5 ul
Enzyme (EcoRI + XhoI)	0.5 + 0.5 ul
Buffer H	1 ul
dH ₂ O	7.5 ul
Total	10 ul

EcoRI	5.0 kb
XhoI	5.0 kb
EcoRI + XhoI	3.9kb (Vector) 1.1 kb

Electrophoresis : 1% agarose gel, 1x TAE Buffer

Marker : 2-Log DNA Ladder (NEB#N3200L)



- ①:Marker
- ②:uncut
- ③:EcoRI
- ④:XhoI
- ⑤:EcoRI + XhoI

● Adjust plasmid DNA solution to 25 ng/ul

Date : 21.12.8

● Confirmation of the insertion sequence

Date : 21.12.7

DNA (192 ng/ul)	90.0 ul
10x TE	69.1 ul
dH ₂ O	532.1 ul
Total	691.2 ul

Primer A	T7 long
Primer B	M13 Reverse
Primer C	poly(A) region primer #3
List of Sequencing Primers	http://dna.brc.riken.jp/en/GNPclone3en.html

● Shipping

Conc. : 25 ng/ul, Volume : 40 ul

Conc. : ~~ng/ul~~, Volume : ~~ul~~

APPROVED BY :

<http://dna.brc.riken.jp/index.html>



S/N G:133 A:129 T:92 C:14

7566_IRAL037B10_B1L6_T7 long

Dec 07,2021 03:25PM, JST

KB.bcp

Primer A: T7 long

KB_3500_POP7_BDTv3.mob

Gray line indicates quality value

Dec 07,2021 03:40PM, JST

KB 1.4.1.8 Cap:1

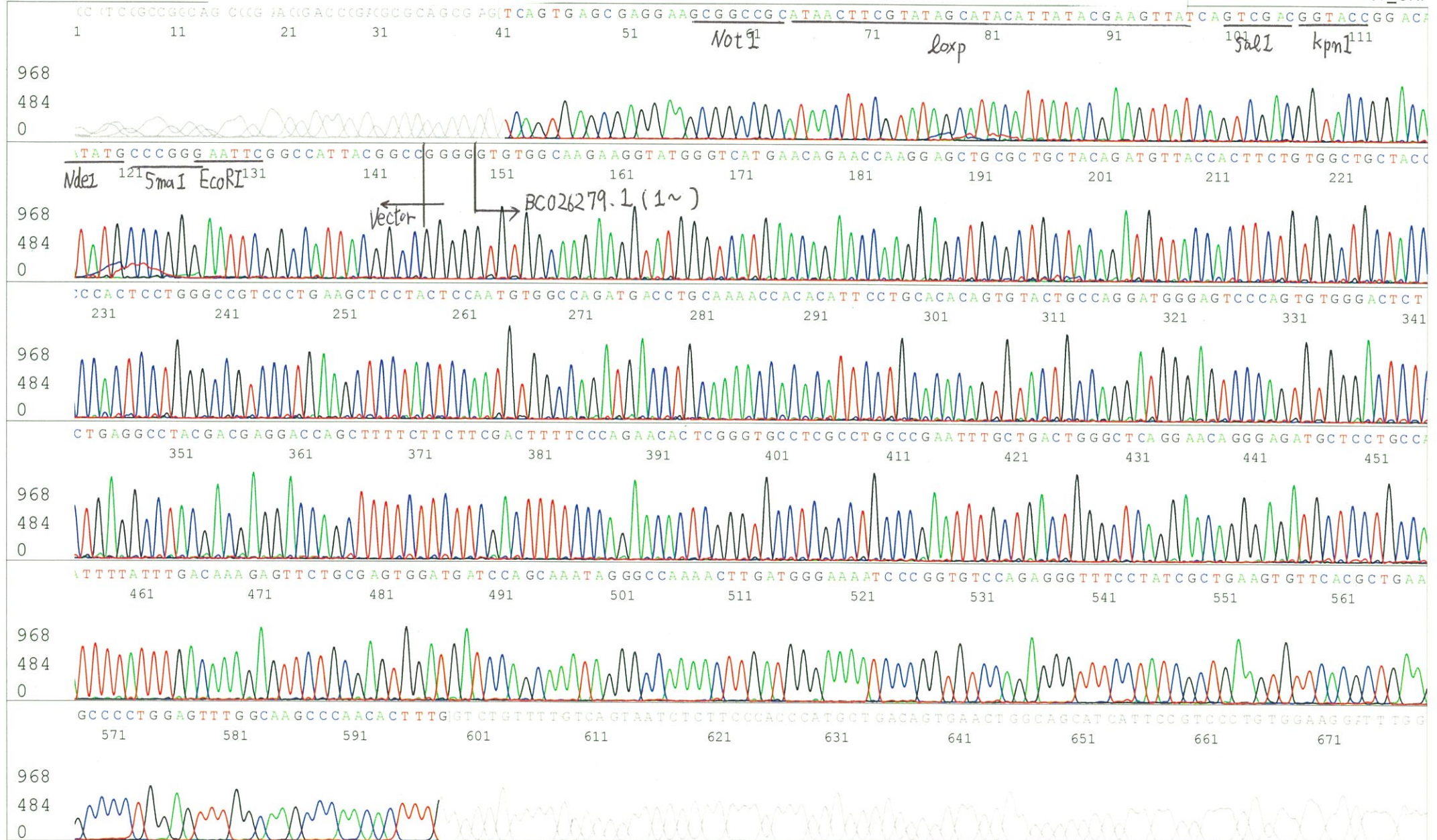
5' CGCCAAGCTCTAATACGACTCACTATAGGG 3'

Pts 1713 to 8703 Pk1 Loc:1681

(QV) < 40.

Spacing:10.65 Pts/Panel1350

Plate Name: 20211207_GNP



S/N G:45 A:52 T:34 C:47
 KB.bcp
 KB 1.4.1.8 Cap:2

Primer B : M13 Reverse

5'-AAACAGCTATGACCATGTTCA-3'

