

RIKEN Clone ID : IRAL036E23

Lot#: 7566_A7F7

Vector : pDNR-LIB

Gene	CLDN8	
Accession No.	BC020866.1	1835 bp
	<i>CDS</i>	678 bp

● Plasmid DNA purification

Date : 170607

Culture : LB (25 ug/ml Chloramphenicol) 5 ml -> at 37 deg C over night

Date : 170608

Purification : QIAGEN Miniprep kit -> dH₂O 100 ul

● Digestion by restriction enzyme/Concentration calibration

Date : 170608

DNA concentration (O.D.): 73 ng/ul

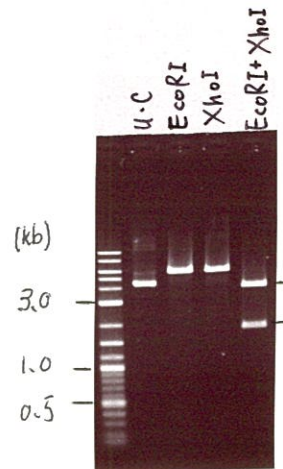
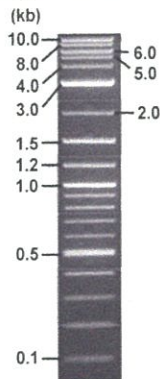
< Size of fragment expected from this clone >

DNA	<u>1.2</u> ul
Enzyme (EcoRI + XhoI)	0.5 + 0.5 ul
Buffer H	1 ul
dH ₂ O	<u>6.8</u> ul
Total	10 ul

EcoRI	5.8 kb
XhoI	5.8 kb
EcoRI + XhoI	3.9kb (Vector) 1.9 kb

Erectrophoresis : 1% agarose gel, 1x TAE Buffer

Marker : 2-Log DNA Ladder (NEB#N3200L)



● Adjust plasmid DNA solution to 25 ng/ul

Date : _____

DNA (<u>73</u> ng/ul)	<u>75.0</u> ul
10x TE	<u>21.9</u> ul
dH ₂ O	<u>122.1</u> ul
Total	<u>219.0</u> ul

● Confirmation of the insertion sequence

Date : 170614

Primer A	T7 long
Primer B	M13 Reverse
Primer C	poly(A) region primer #0
List of Sequencing Primers	http://dna.brc.riken.jp/en/GNPclone3en.html

● Shipping

Conc. : 25 ng/μl, Volume : 40 μl
 Conc. : _____ ng/μl, Volume : _____ μl



APPROVED BY : <http://dna.brc.riken.jp/index.html>

S/N G:101 A:95 T:103 C:14 Primer A: T7 long

IRAL036E23_A7F7_T7long

Jun 14,2017 03:30PM, JST

KB.bcp

KB_3500_POP7_BDTv3.mob

Jun 14,2017 03:46PM, JST

KB 1.4.1.8 Cap:13

5' CGCCAAGCTCTAATACGACTCACTATAGGG 3'

Pts 1746 to 8706 Pk1 Loc:1714

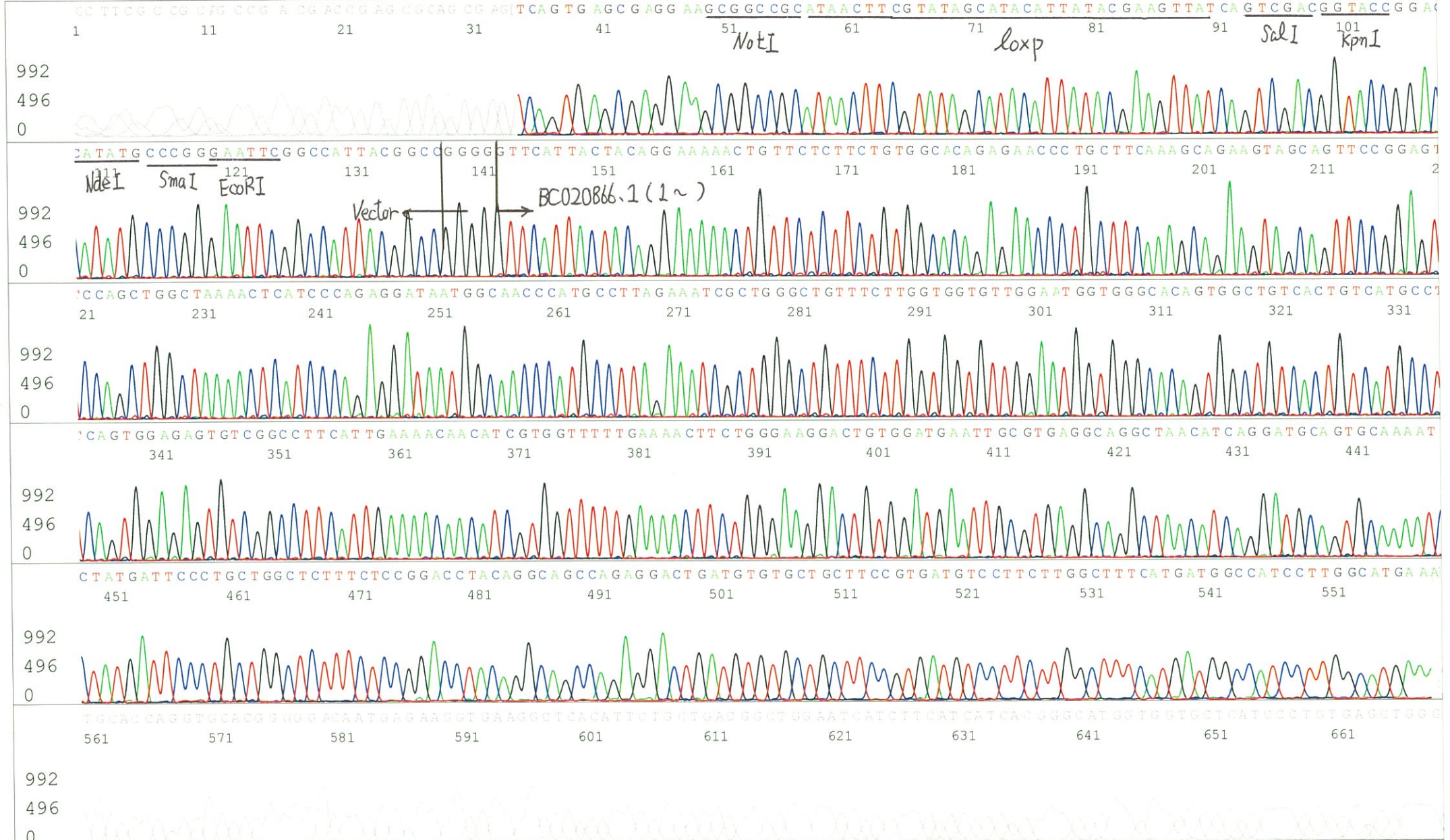
Gray line indicates quality value

Spacing:10.62 Pts/Panel1350

Version 6.0 HiSQV Bases: 715

(QV) < 40.

Plate Name: 20170614_GNP



S/N G:53 A:104 T:97 C:79
KB.bcp
KB 1.4.1.8 Cap:19

Primer C : Poly(A) region primer #0
5' TTTTTTTTTTTTTTTTTTTNNN 3'

IRAL036E23_A7F7_GNPmixture
KB_3500_POP7_BDTv3.mob
Pts 1735 to 8706 Pk1 Loc:1703
Version 6.0 HiSQV Bases: 712

Gray line indicates quality value
(QV) < 40.

Jun 14,2017 03:30PM, JST
Jun 14,2017 03:46PM, JST
Spacing:10.63 Pts/Panel1350
Plate Name: 20170614_GNP

