

RIKEN Clone ID : IRAL034L24

Lot#: 7566_B0F4

Vector : pOTB7

Gene	STXBP1	
Accession No.	BC015749.1	2155 bp
	CDS	1785 bp

● Plasmid DNA purification

Date : 2020.06.23

Culture : LB (25 ug/ml Chloramphenicol) 5 ml -> at 37 deg C over night

Date : 2020.06.24

Purification : QIAGEN Miniprep kit -> dH₂O 100 ul

● Digestion by restriction enzyme/Concentration calibration

Date : 2020.06.24

DNA concentration (O.D.): 220 ng/ul

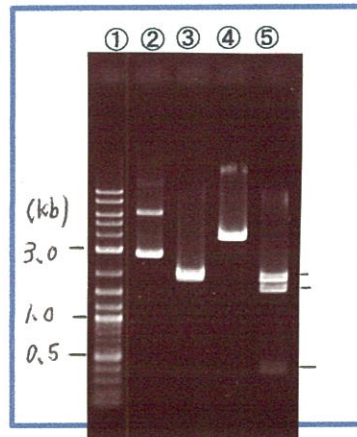
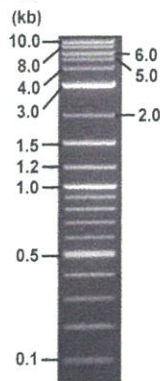
< Size of fragment expected from this clone >

DNA	0.5	ul
Enzyme (BamHI + BglII)	0.5 + 0.5	ul
Buffer H	1	ul
dH ₂ O	7.5	ul
Total	10	ul

BamHI	2.0, 1.9 kb
BglII	3.9 kb
BamHI + BglII	1.6kb (Vector) 1.9, 0.4 kb

Electrophoresis : 1% agarose gel, 1x TAE Buffer

Marker : 2-Log DNA Ladder (NEB#N3200L)



- ①:Marker
- ②:uncut
- ③:BamHI
- ④:BglII
- ⑤:BamHI + BglII

● Adjust plasmid DNA solution to 25 ng/ul

Date : 2020.07.08

DNA (<u>220</u> ng/ul)	83.0	ul
10x TE	73.0	ul
dH ₂ O	574.4	ul
Total	730.4	ul

● Confirmation of the insertion sequence

Date : 2020.06.26

Primer A	pOTB7_F
Primer B	pOTB7_R
Primer C	poly(A) region primer #33
List of Sequencing Primers	http://dna.brc.riken.jp/en/GNPclone3en.html

● Shipping

Conc. : 25 ng/ul, Volume : 40 ul

Conc. : ~~ng/ul~~, Volume : ~~ul~~

APPROVED BY :

<http://dna.brc.riken.jp/index.html>



S/N G:513 A:435 T:329 C:564

Primer A: pOTB7-F

IRAL034L24_B0F4_3_pOTB7_F

KB_3500_POP7_BDTV3.mob

Gray line indicates quality value

Jun 25,2020 12:30PM, JST

KB.bcp

Pts 1700 to 8372 Pk1 Loc:1668

(QV) < 40.

Jun 25,2020 12:47PM, JST

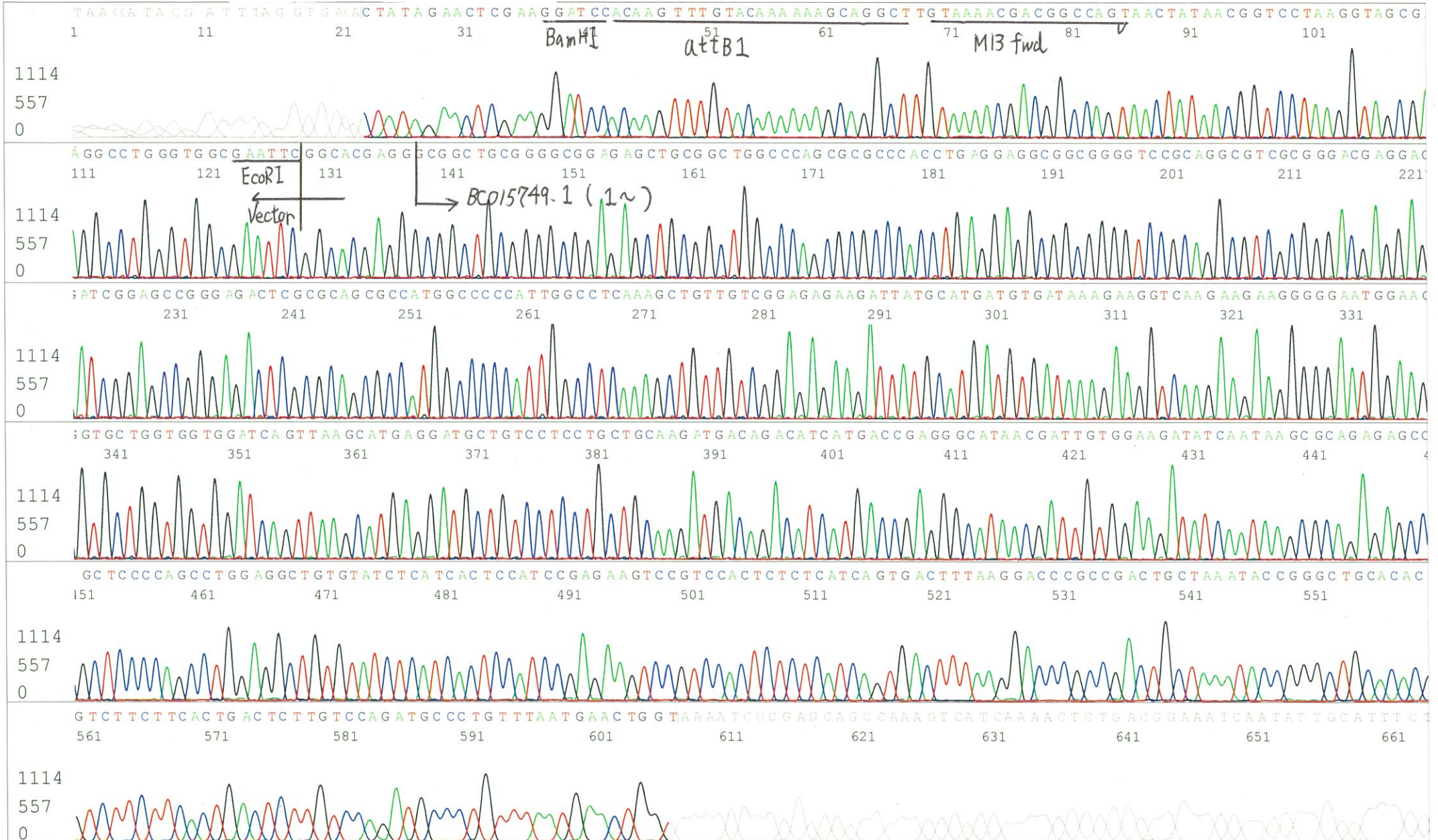
KB 1.4.1.8 Cap:2

5' AACGCGGCTACAATTAATACATAACC 3'

Version 6.0 HiSQV Bases: 666

pacing:10.07 Pts/Panel1350

Plate Name: 20200625_GNP



S/N G:144 A:133 T:91 C:151
KB.bcp
KB 1.4.1.8 Cap:4

Primer C : Poly(A) region primer #33
5' TTTTTTTTTTTTTTTTTTTTTTAAA3'

7566_IRAL034L24_B0F4_3_GNP 33
KB_3500_POP7_BDTV3.mob
Pts 1647 to 8294 Pk1 Loc:1615
Version 6.0 HiSQV Bases: 671

Gray line indicates quality value
(QV) < 40.

Jun 26,2020 01:58PM, JST
Jun 26,2020 02:13PM, JST
Spacing:10.08 Pts/Panel1350
Plate Name: 20200626_GNP2

