

RIKEN Clone ID : IRAL034J22

Lot#: 7566_B2Lm

Vector : pOTB7

Gene	LGP2	
Accession No.	BC014949.1	2584 bp
	<i>CDS</i>	2037 bp

● Plasmid DNA purification

Date : 23.01.10

Culture : LB (25 ug/ml Chloramphenicol) 5 ml -> at 37 deg C over night

Date : 23.01.11

Purification : QIAGEN Miniprep kit -> dH₂O 100 ul

● Digestion by restriction enzyme/Concentration calibration

Date : 23.01.11

DNA concentration (O.D.): 189 ng/ul

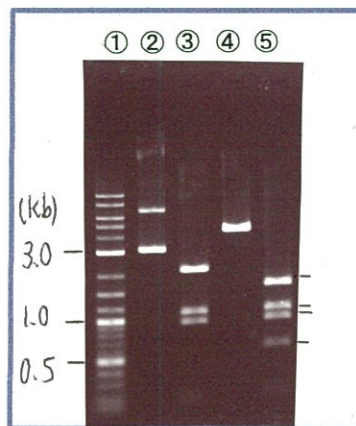
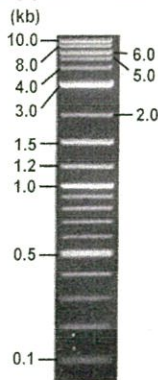
< Size of fragment expected from this clone >

DNA	0.5 ul
Enzyme (BamHI + BglII)	0.5 + 0.5 ul
Buffer H	1 ul
dH ₂ O	7.5 ul
Total	10 ul

BamHI	2.2, 1.1, 0.9, 0.2 kb
BglII	4.4 kb
BamHI + BglII	1.6kb (Vector) 1.1, 0.9, 0.6, 0.2kb

Electrophoresis : 1% agarose gel, 1x TAE Buffer

Marker : 2-Log DNA Ladder (NEB#N3200L)



- ①:Marker
- ②:uncut
- ③:BamHI
- ④:BglII
- ⑤:BamHI + BglII

● Adjust plasmid DNA solution to 25 ng/ul

Date : 23.01.18

DNA (189 ng/ul)	84.0 ul
10x TE	63.5 ul
dH ₂ O	487.5 ul
Total	635.0 ul

● Confirmation of the insertion sequence

Date : 23.01.17

Primer A	pOTB7_F
Primer B	pOTB7_R
Primer C	poly(A) region primer #39
List of Sequencing Primers	http://dna.brc.riken.jp/en/GNPclone3en.html

● Shipping

Conc. : 25 ng/ul, Volume : 40 ul

Conc. : ~~ng/ul~~, Volume : ~~ul~~

APPROVED BY :

<http://dna.brc.riken.jp/index.html>



S/N G:1017 A:1212 T:800 C:1007

Primer A: pOTB7-F

7566_IRAL034J22_B2Lm_pOTB7_F

Dec 23,2022 04:28PM, JST

KB.bcp

KB_3500_POP7_BDTv3.mob

Gray line indicates quality value

Dec 23,2022 04:55PM, JST

KB 1.4.1.8 Cap:17

5' AACGCGGCTACAATTAATACATAACC 3'

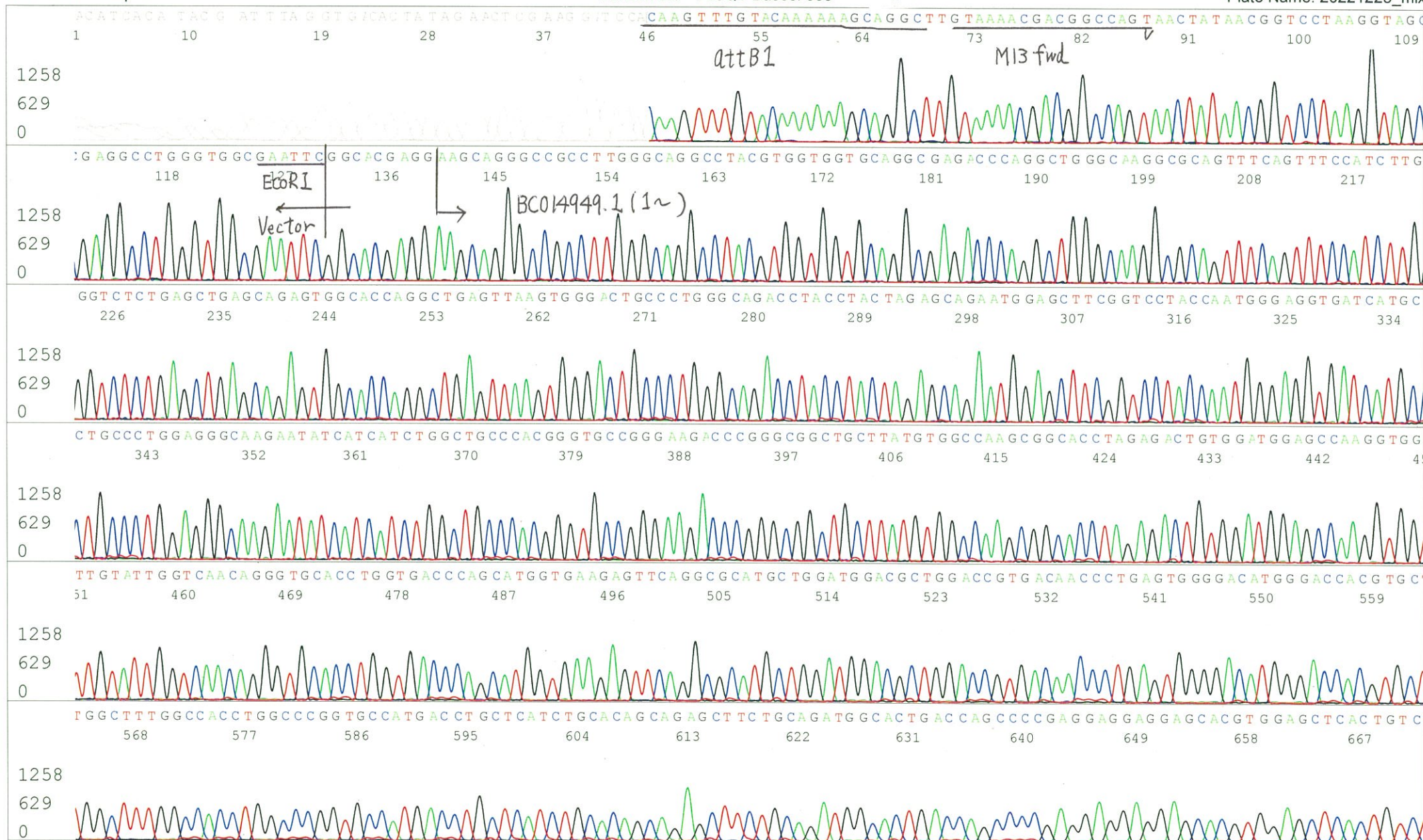
Pts 1563 to 13168 Pk1 Loc:1540

(QV) < 40.

Spacing:11.64 Pts/Panel1350

Version 6.0 HiSQV Bases: 853

Plate Name: 20221223_mix



S/N G:492 A:634 T:453 C:591
KB.bcp
KB 1.4.1.8 Cap:20

Primer B: pOTB7-R
5' GTACTGCAGCCGATTCATTAATGC 3'

Gray line indicates quality value
(QV) < 40.



S/N G:284 A:361 T:224 C:33. Primer C : Poly(A) region primer #39
KB.bcp
KB 1.4.1.8 Cap:19 5' TTTTTTTTTTTTTTTTTTTTTT AIC 3'

7566_IRAL034J22_B2Lm_1_GNP39
KB_3500_POP7_BDTv3.mob
Pts 1497 to 11989 Pk1 Loc:1480
Version 6.0 HiSQV Bases: 787

Gray line indicates quality value
(QV) < 40.

Jan 17,2023 01:59PM, JST
Jan 17,2023 02:19PM, JST
Spacing:13.23 Pts/Panel1350
Plate Name: 20230117_GNP

