

RIKEN Clone ID : IRAL034I15

Vector : pOTB7

Gene	OGT	
Accession No.	BC014434.1	3327 bp
	CDS	3111 bp

● Plasmid DNA purification

Date : _____

Culture : LB (25 ug/ml Chloramphenicol) 5 ml -> at 37 deg C over night

Date : 160524

Purification : QIAGEN Miniprep kit -> dH₂O 100 ul

● Digestion by restriction enzyme/Concentration calibration

Date : 160524

DNA concentration (O.D.): 275 ng/ul

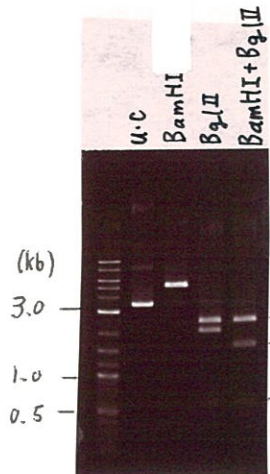
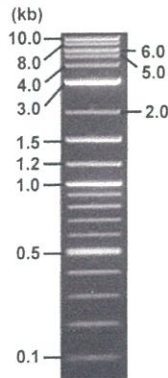
< Size of fragment expected from this clone >

DNA	0.3	ul
Enzyme (BamHI + BglII)	0.5 + 0.5	ul
Buffer H	1	ul
dH ₂ O	7.7	ul
Total	10	ul

BamHI	5.2	kb
BglII	2.5, 2.0, 0.61	kb
BamHI + BglII	1.6kb (Vector)	2.5, 0.61, 0.45 kb

Electrophoresis : 1% agarose gel, 1x TAE Buffer

Marker : 2-Log DNA Ladder (NEB#N3200L)



● Adjust plasmid DNA solution to 25 ng/ul

Date : 160527

DNA (275 ng/ul)	86.0	ul
10x TE	94.6	ul
dH ₂ O	765.4	ul
Total	946.0	ul

● Confirmation of the insertion sequence

Date : 160525

Primer A	pOTB7_F
Primer B	pOTB7_R
Primer C	-
List of Sequencing Primers	http://dna.brc.riken.jp/en/GNPclone3en.html

● Shipping

Conc. : 25 ng/ul, Volume : 40 ul

Conc. : ng/ul, Volume : ul

APPROVED BY :

<http://dna.brc.riken.jp/index.html>

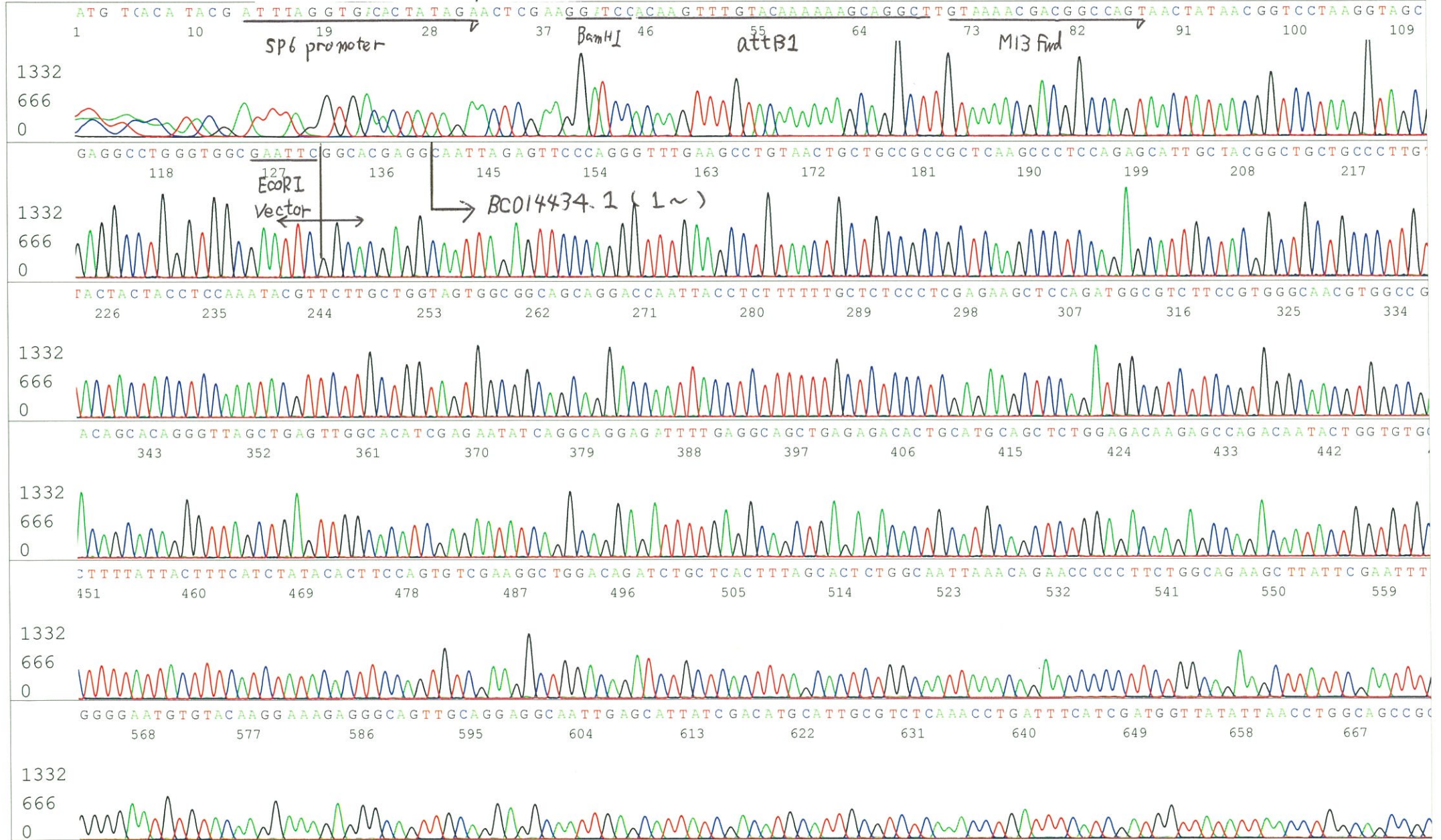


S/N G:535 A:399 T:433 C:438
 KB.bcp
 KB 1.4.1.8 Cap:1

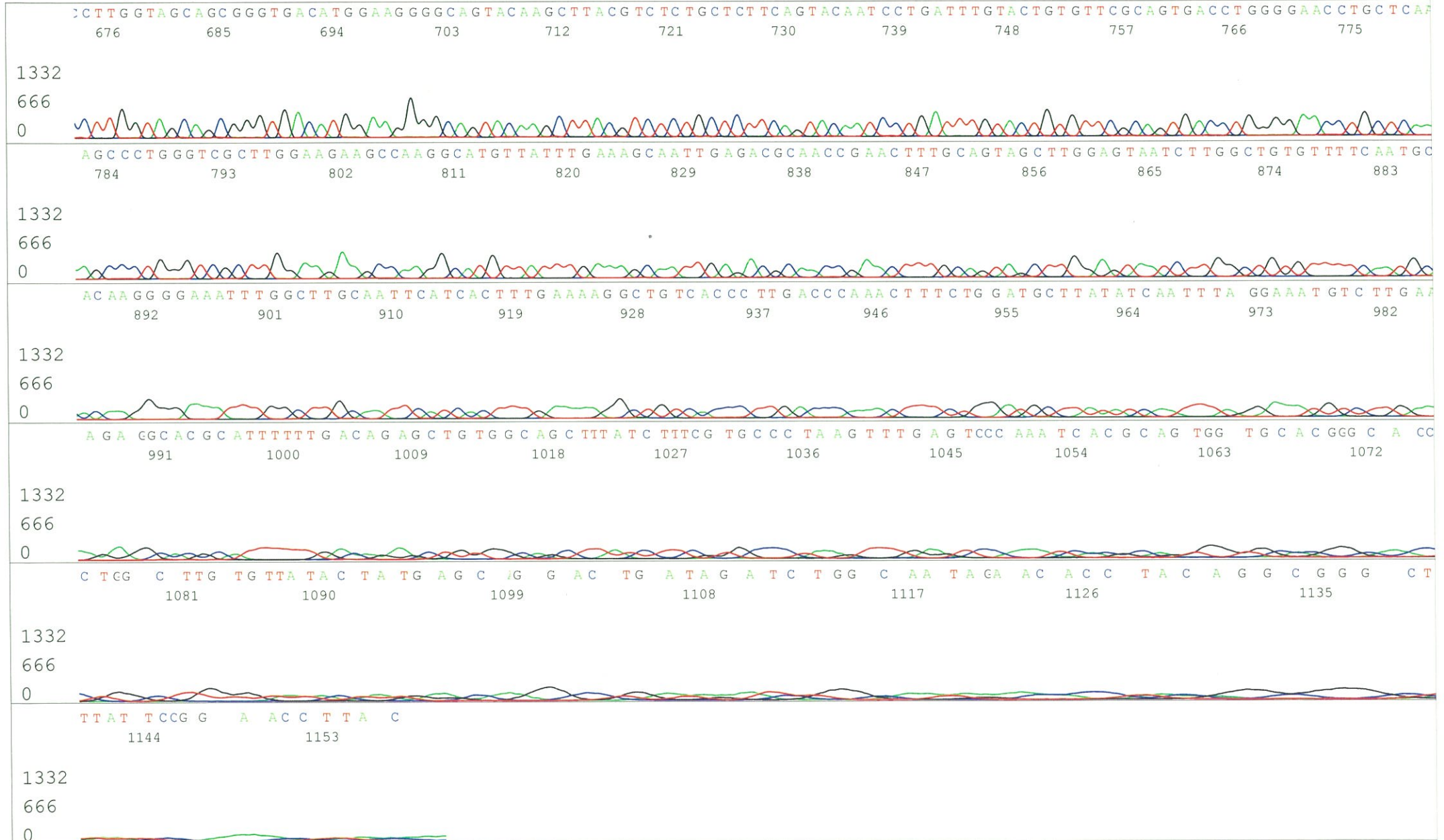
Primer A: pOTB7-F
 5' AACGCGGCTACAATTAATACATAACC 3'

IRAL034I15_A6Ej_pOTB7_F_A07_01
 IRAL034I15_A6Ej_pOTB7_F
 KB_3500_POP7_BDTv3.mob
 Pts 1379 to 12998 Pk1 Loc:1356
 Version 6.0 HiSQV Bases: 1028

Inst Model/Name 3500/3500 Instrument
 May 25,2016 01:58PM, JST
 May 25,2016 02:24PM, JST
 Spacing:11.57 Pts/Panel1350
 Plate Name: 20160525_GNP



S/N G:535 A:399 T:433 C:438
KB.bcp
KB 1.4.1.8 Cap:1

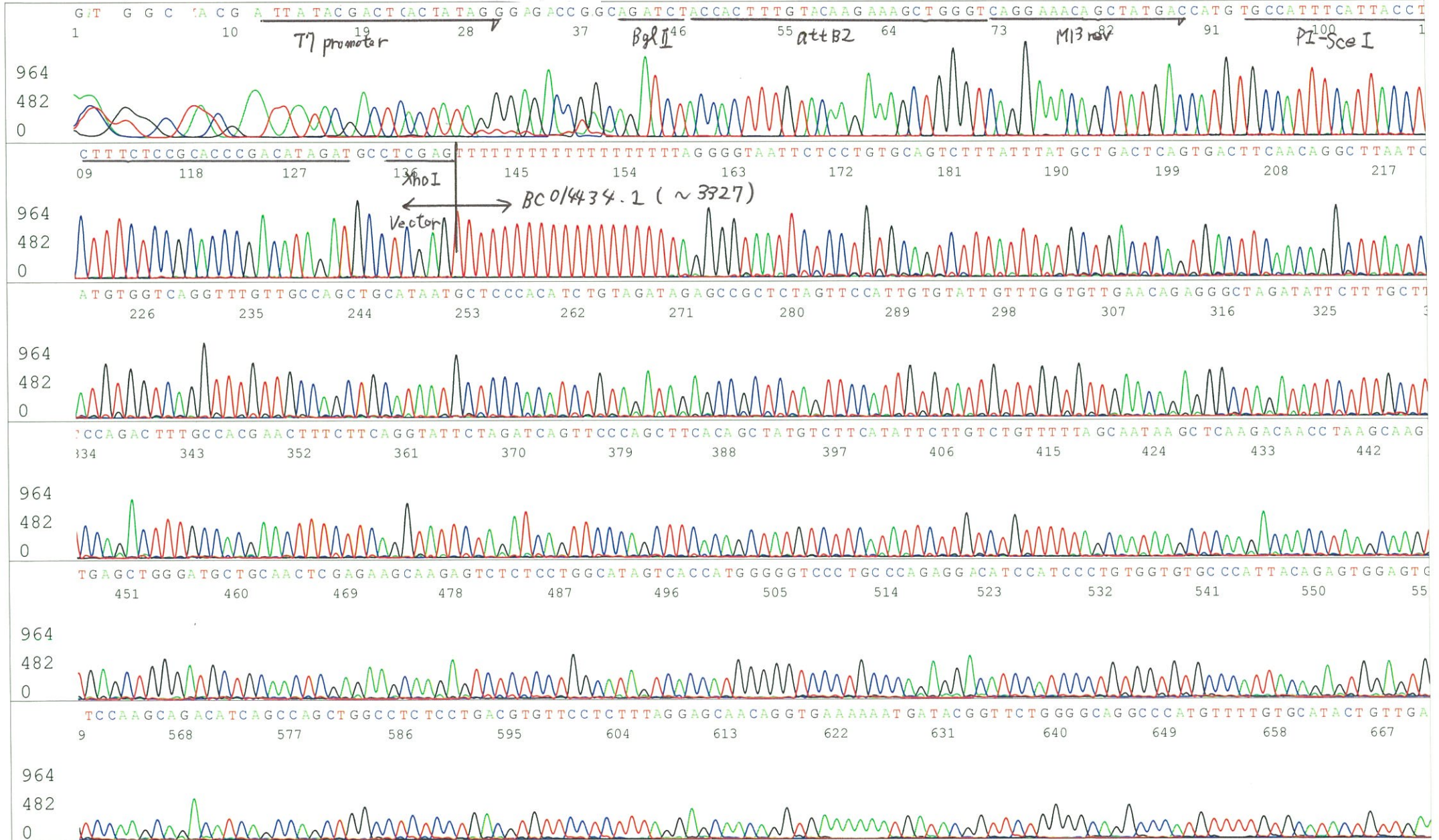


S/N G:1013 A:922 T:1068 C:848
KB.bcp
KB 1.4.1.8 Cap:4

Primer B: pOTB7-R
5' GTACTGCAGCCGATTTCATTAATGC 3'

IRAL034115_A6Ej_pOTB7_R_B07_04
IRAL034115_A6Ej_pOTB7_R
KB_3500_POP7_BDTv3.mob
Pts 1374 to 12969 Pk1 Loc:1351
Version 6.0 HiSQV Bases: 999

Inst Model/Name 3500/3500 Instrument
May 25,2016 01:58PM, JST
May 25,2016 02:24PM, JST
Spacing:11.5 Pts/Panel1350
Plate Name: 20160525_GNP



S/N G:1013 A:922 T:1068 C:848
KB.bcp
KB 1.4.1.8 Cap:4

