

RIKEN Clone ID : IRAL034H05

Lot#: 7566_A9Aa

Vector : pOTB7

Gene	SPRY2	
Accession No.	BC015745.1	1918 bp
	<i>CDS</i>	948 bp

● Plasmid DNA purification

Date : 190116

Culture : LB (25 ug/ml Chloramphenicol) 5 ml -> at 37 deg C over night

Date : 190117

Purification : QIAGEN Miniprep kit -> dH₂O 100 ul

● Digestion by restriction enzyme/Concentration calibration

Date : 190117

DNA concentration (O.D.): 179 ng/ul

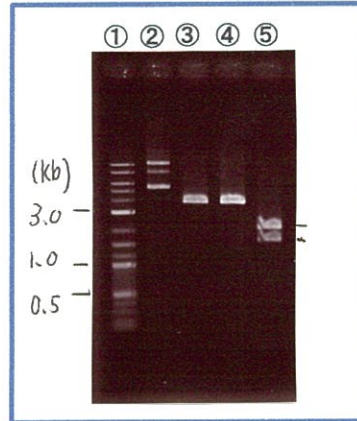
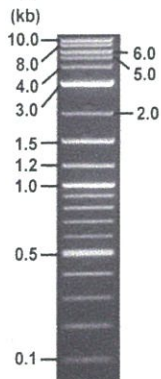
< Size of fragment expected from this clone >

DNA	0.6 ul
Enzyme (BamHI + BglII)	0.5 + 0.5 ul
Buffer H	1 ul
dH ₂ O	7.4 ul
Total	10 ul

BamHI	3.7 kb
BglII	3.7 kb
BamHI + BglII	1.6kb (Vector) 2.1 kb

Electrophoresis : 1% agarose gel, 1x TAE Buffer

Marker : 2-Log DNA Ladder (NEB#N3200L)



- ①:Marker
- ②:uncut
- ③:BamHI
- ④:BglII
- ⑤:BamHI + BglII

● Adjust plasmid DNA solution to 25 ng/ul

Date : 190124

DNA (<u>179 ng/ul</u>)	<u>88.0</u> ul
10x TE	<u>63.0</u> ul
dH ₂ O	<u>479.0</u> ul
Total	<u>630.0</u> ul

● Confirmation of the insertion sequence

Date : 190123

Primer A	pOTB7_F
Primer B	pOTB7_R
Primer C	poly(A) region primer #0
List of Sequencing Primers	http://dna.brc.riken.jp/en/GNPclone3en.html

● Shipping

Conc. : 25 ng/ul, Volume : 40 ul
 Conc. : ng/ul, Volume : ul



APPROVED BY : <http://dna.brc.riken.jp/index.html>

S/N G:1397 A:1161 T:477 C:867

IRAL034H05_A9Aa_III_pOTB7_F

Jan 23,2019 09:45AM, JST

KB.bcp

KB_3500_POP7_BDTv3.mob

Gray line indicates quality value

Jan 23,2019 10:02AM, JST

KB 1.4.1.8 Cap:9

Primer A: pOTB7-F

Pts 1809 to 8706 Pk1 Loc:1777

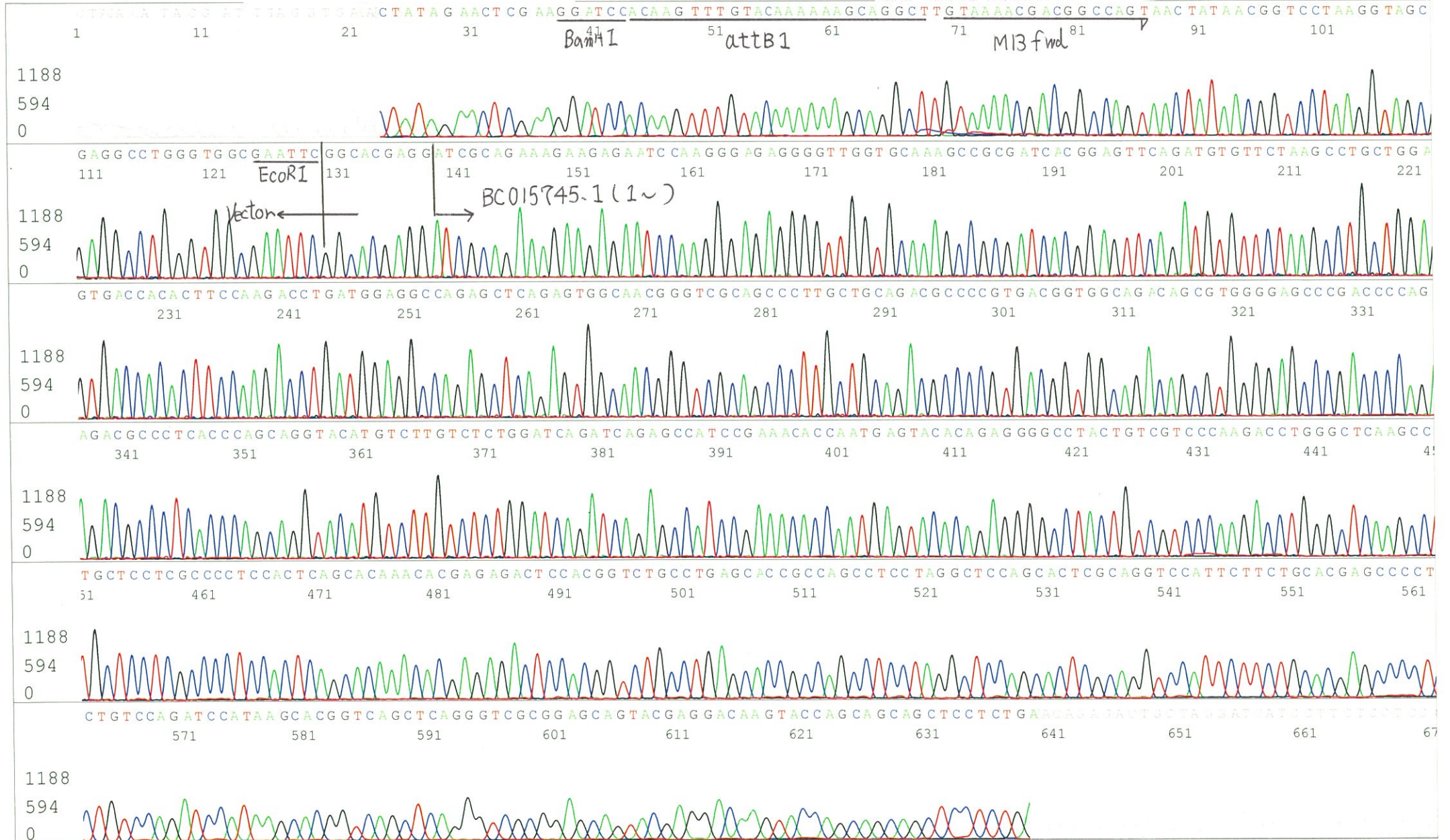
(QV) < 40.

Spacing:10.89 Pts/Panel1350

5' AACGCGGCTACAATTAATACATAACC 3'

Version 6.0 HiSQV Bases: 701

Plate Name: 20190123_mix



S/N G:20 A:25 T:30 C:25

Primer B: pOTB7-R

IRAL034H05_A9Aa_III_pOTB7_R

Jan 18,2019 10:10AM, JST

KB.bcp

KB_3500_POP7_BDTv3.mob

Jan 18,2019 10:37AM, JST

KB 1.4.1.8 Cap:6

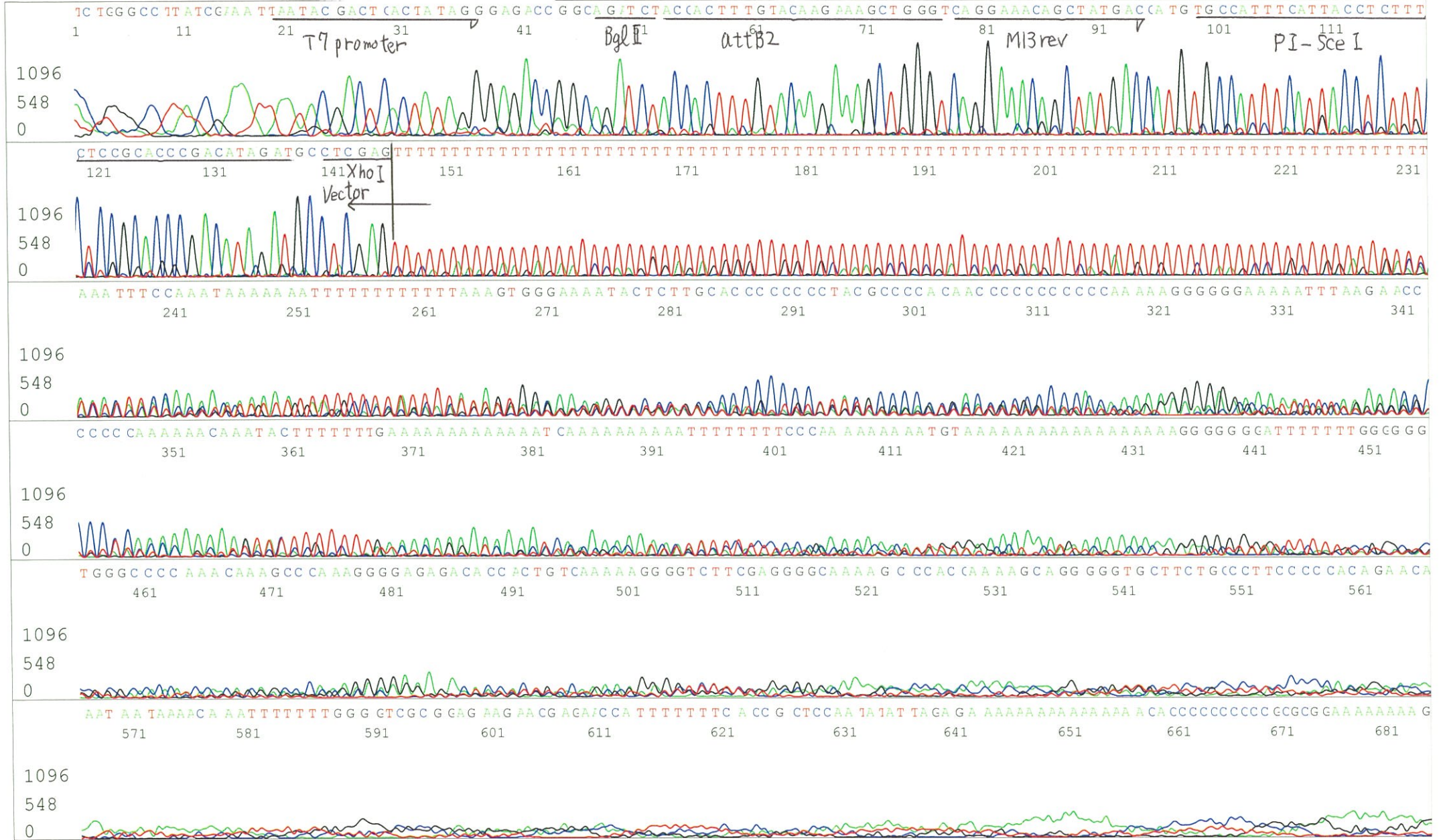
5' GTACTGCAGCCGATTCATTAATGC 3'

Pts 1801 to 8702 Pk1 Loc:1769

Spacing:11.94 Pts/Panel1350

Version 6.0 HiSQV Bases: 278

Plate Name: 20190118_GNP



S/N G:20 A:27 T:23 C:23

Primer C : Poly(A) region primer #0

IRAL034H05_A9Aa_III_GNP Mixture

KB_3500_POP7_BDTv3.mob
Pts 1792 to 8702 Pk1 Loc:1760

Gray line indicates quality value

Jan 18,2019 10:10AM, JST

Jan 18,2019 10:37AM, JST

KB.bcp

KB 1.4.1.8 Cap:7

5' TTTTTTTTTTTTTTTTTTTTTTNNN 3'

Version 6.0 HiSQV Bases: 641

(QV) < 40.

Spacing:11.64 Pts/Panel1350

Plate Name: 20190118_GNP

