

**RIKEN Clone ID : IRAL034G12**

Lot#: 7566\_A4Gs

Vector : pOTB7

Gene	CTSK	
Accession No.	BC016058.1	1699 bp
	<i>CDS</i>	990 bp
		1..1699
		112..1101

● Plasmid DNA purification

Date : 140729

Culture : LB (25 ug/ml Chloramphenicol) 5 ml → at 37 deg C over night

Date : 140730

Purification : QIAGEN Miniprep kit → dH<sub>2</sub>O 100 ul

● Digestion by restriction enzyme/Concentration calibration

Date : 140730

DNA concentration (O.D.): 204 ng/ul

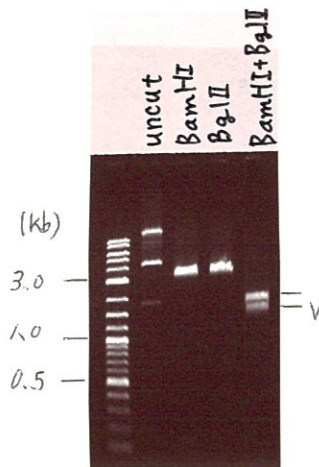
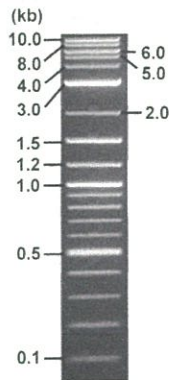
< Size of fragment expected from IRAL034G12 >

DNA	0.2	ul
Enzyme (BamHI + BglII )	0.5 + 0.5	ul
Buffer H	1	ul
dH <sub>2</sub> O	7.8	ul
Total	10	ul

BamHI	3500	bp
BglII	3500	bp
BamHI + BglII	1615bp (Vector)	1885 bp

Electrophoresis : 1% agarose gel, 1x TAE Buffer

Marker : 2-Log DNA Ladder (NEB#N3200L)



● Adjust plasmid DNA solution to 25 ng/ul

Date : 140804

● Confirmation of the insertion sequence

Date : 140801

DNA ( <u>204</u> ng/ul)	87.0	ul
10x TE	71.0	ul
dH <sub>2</sub> O	551.9	ul
Total	709.9	ul

Primer A	pOTB7_F
Primer B	pOTB7_R
Primer C : Poly(A) region primer #	<u>38</u>
List of Sequencing Primers	<a href="http://dna.brc.riken.jp/en/GNPclone3en.html">http://dna.brc.riken.jp/en/GNPclone3en.html</a>

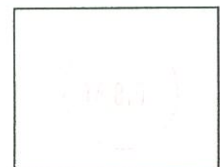
● Shipping

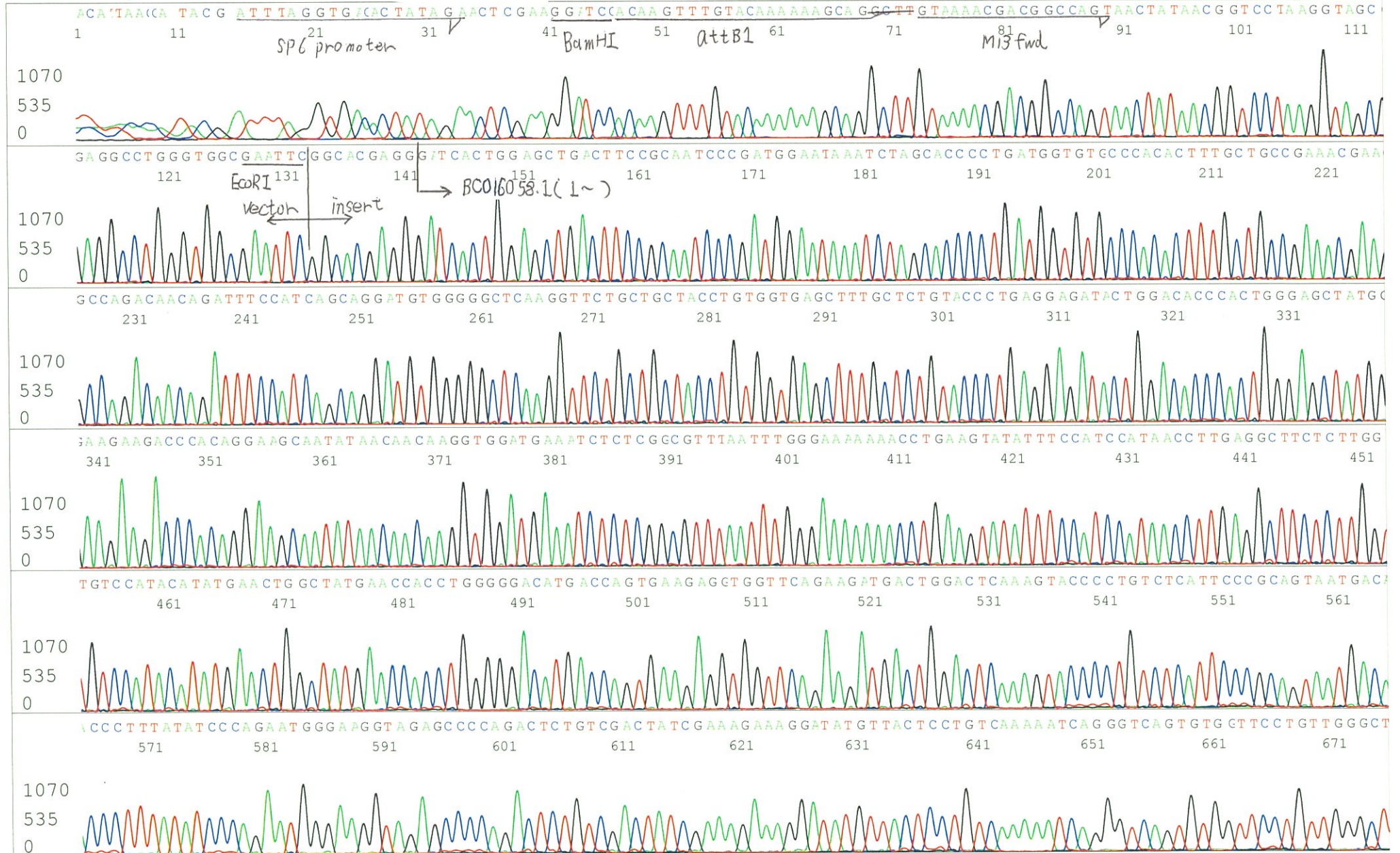
Conc. : 25 ng/ul, Volume : 40 ul

~~Conc. : ng/ul, Volume : ul~~

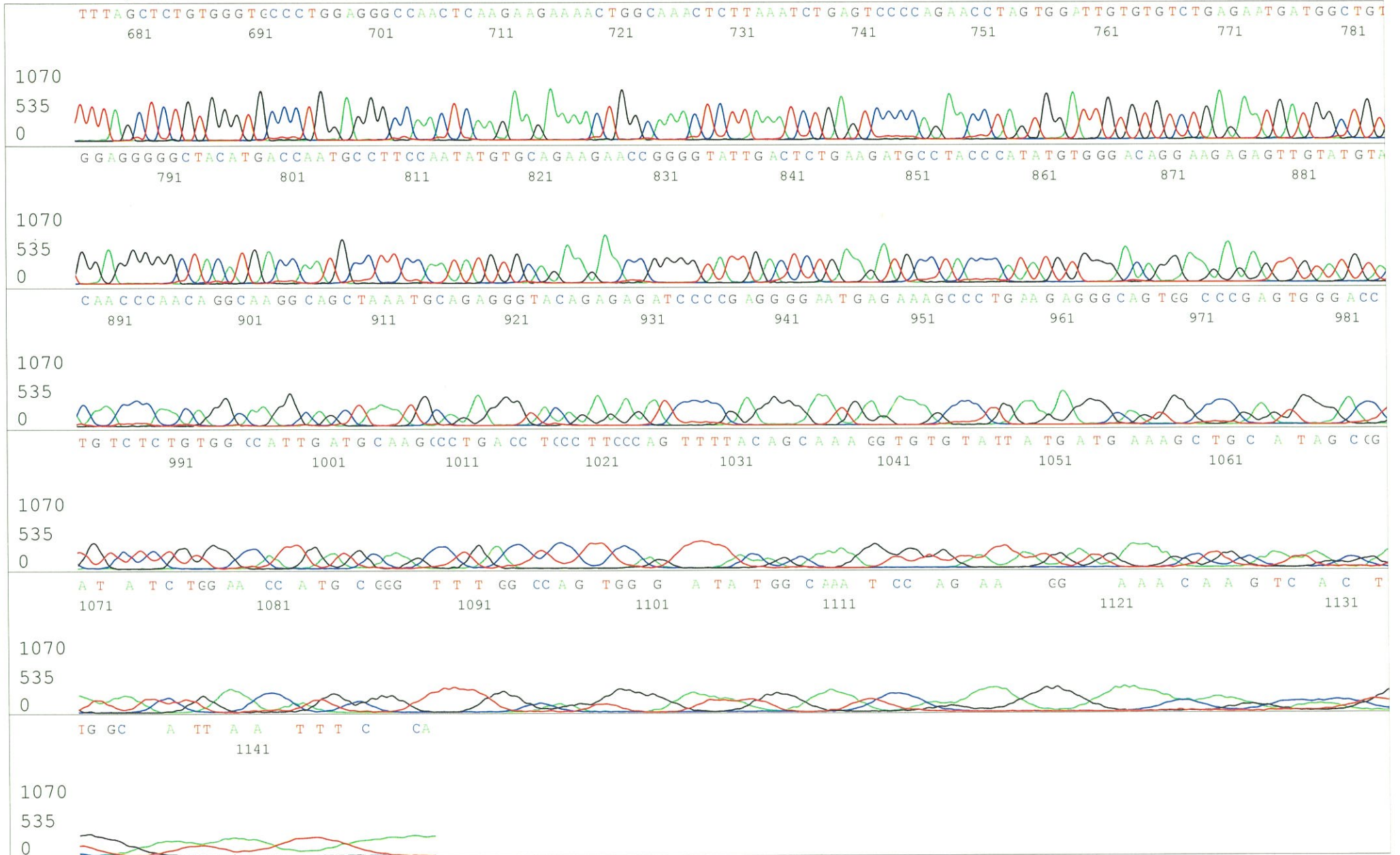
APPROVED BY :

<http://dna.brc.riken.jp/index.html>





S/N G:137 A:188 T:144 C:142  
KB.bcp  
KB 1.4.1.8 Cap:13



S/N G:21 A:30 T:28 C:29

Primer B: pOTB7-R

JRAL034G12\_A4Gs\_III\_pOTB7\_R

Jul 26, 2014 01:41PM, JST

KB.bcp

KB\_3500\_POP7\_BDTv3.mob

Jul 26, 2014 02:10PM, JST

KB 1.4.1.8 Cap:16

5' GTACTGCAGCCGATTCATTAAATGC 3'

Pts 1416 to 13485 Pk1 Loc:1393

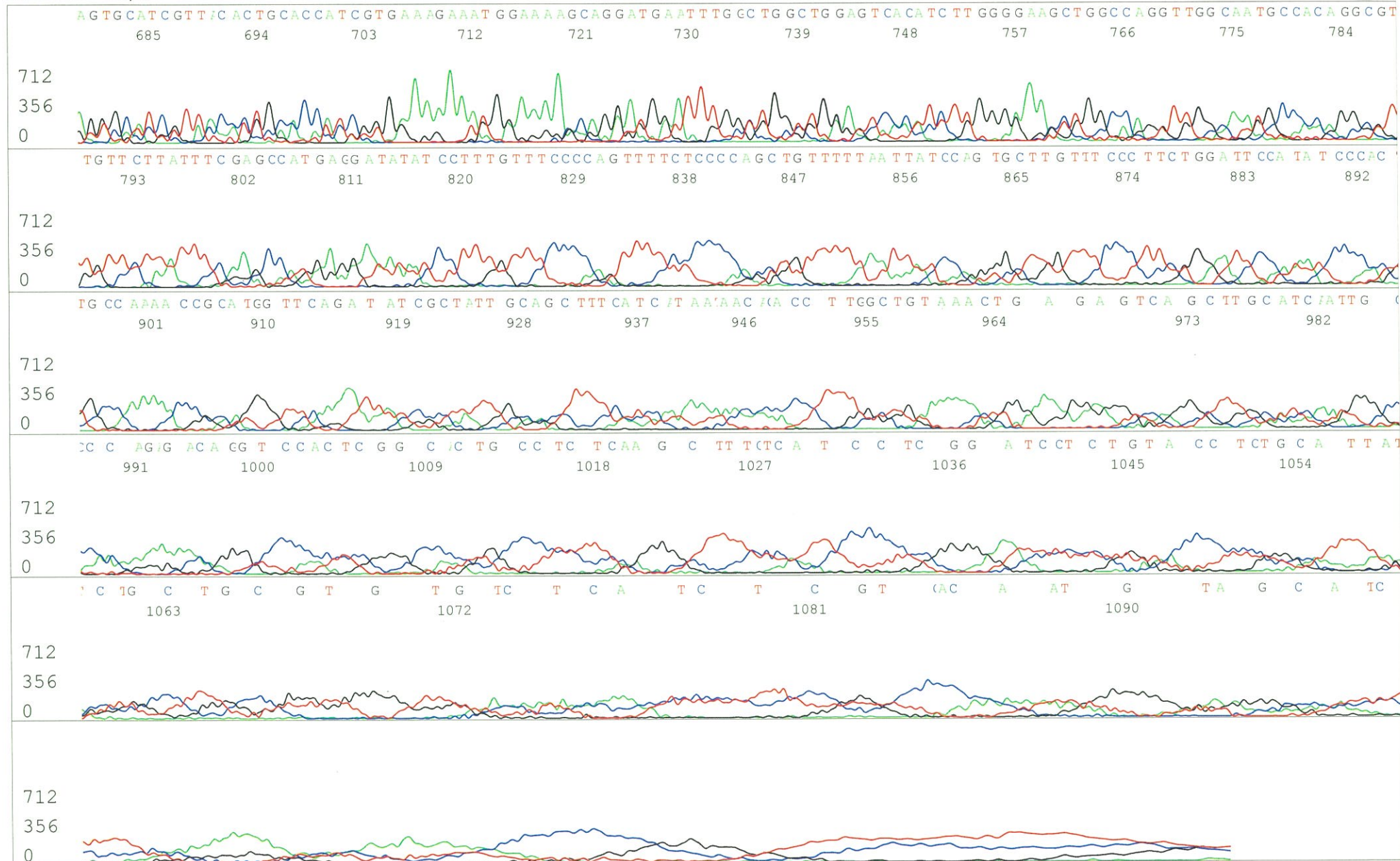
Spacing:12.05 Pts/Panel1350

Version 5.4 HiSQV Bases: 516

Plate Name: 20140731\_GNP



S/N G:21 A:30 T:28 C:29  
KB.bcp  
KB 1.4.1.8 Cap:16

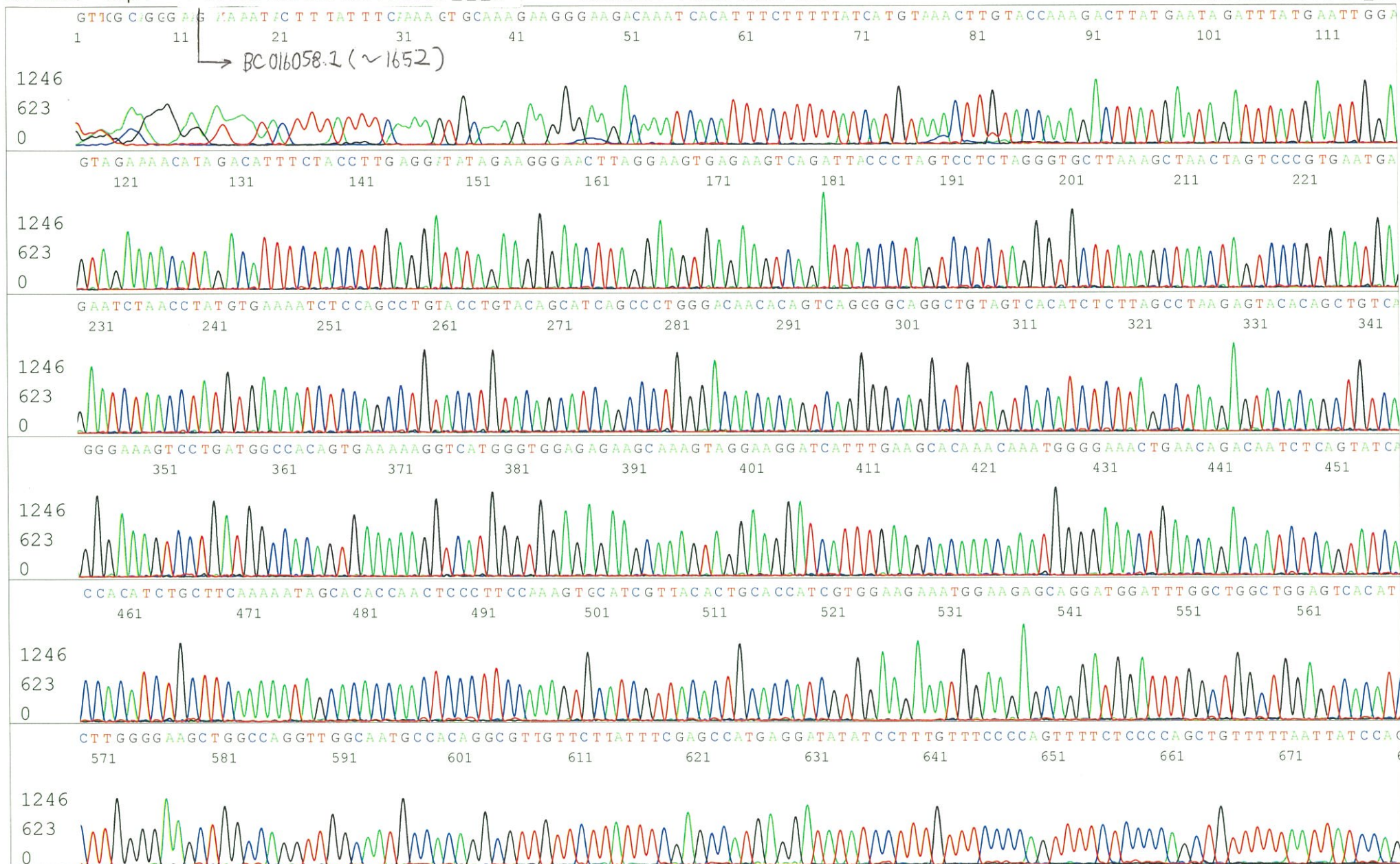


S/N G:47 A:57 T:39 C:4  
KB.bcp  
KB 1.4.1.8 Cap:1

Primer C : Poly(A) region primer #38

5' TTTTTTTTTTTTTTTTTTTTTT AIT 3'

BC 016058.1 (~1652)



S/N G:47 A:57 T:39 C:41  
KB.bcp  
KB 1.4.1.8 Cap:1

