

RIKEN Clone ID : IRAL033B10

Lot#: 7566_A8B9

Vector : pOTB7

Gene	C19orf33	
Accession No.	BC014264.2	459 bp
	<i>GDS</i>	321 bp

● Plasmid DNA purification

Date : 180213

Culture : LB (25 ug/ml Chloramphenicol) 5 ml -> at 37 deg C over night

Date : 180215

Purification : QIAGEN Miniprep kit -> dH₂O 100 ul

● Digestion by restriction enzyme/Concentration calibration

Date : 180215

DNA concentration (O.D.): 58 ng/ul

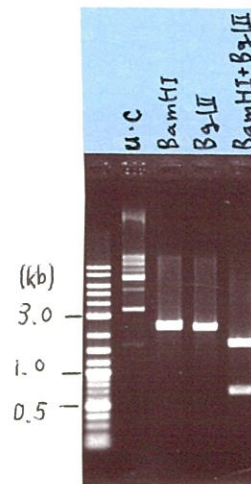
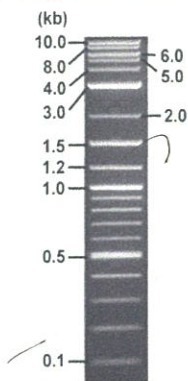
< Size of fragment expected from this clone >

DNA	1.5	ul
Enzyme (BamHI + BglII)	0.5 + 0.5	ul
Buffer H	1	ul
dH ₂ O	6.5	ul
Total	10	ul

BamHI	2.2	kb
BglII	2.2	kb
BamHI + BglII	1.6kb (Vector)	0.6 kb

Electrophoresis : 1% agarose gel, 1x TAE Buffer

Marker : 2-Log DNA Ladder (NEB#N3200L)



● Adjust plasmid DNA solution to 25 ng/ul

Date : 180228

DNA (<u>58</u> ng/ul)	<u>70.0</u>	ul
10x TE	<u>16.2</u>	ul
dH ₂ O	<u>76.2</u>	ul
Total	<u>162.4</u>	ul

● Confirmation of the insertion sequence

Date : 180221

Primer A	pOTB7_F
Primer B	pOTB7_R
Primer C	poly(A) region primer #0
List of Sequencing Primers	http://dna.brc.riken.jp/en/GNPclone3en.html

● Shipping

Conc. : 25 ng/ul, Volume : 40 ul

Conc. : ng/ul, Volume : ul

APPROVED BY : <http://dna.brc.riken.jp/index.html>



S/N G:183 A:179 T:137 C:322

Primer A: pOTB7-F

IRAL033B10_A8B9_pOTB7_F

Feb 21, 2018 05:44PM, JST

KB.bcp

KB_3500_POP7_BDTv3.mob

Gray line indicates quality value

Feb 21, 2018 06:00PM, JST

KB 1.4.1.8 Cap:7

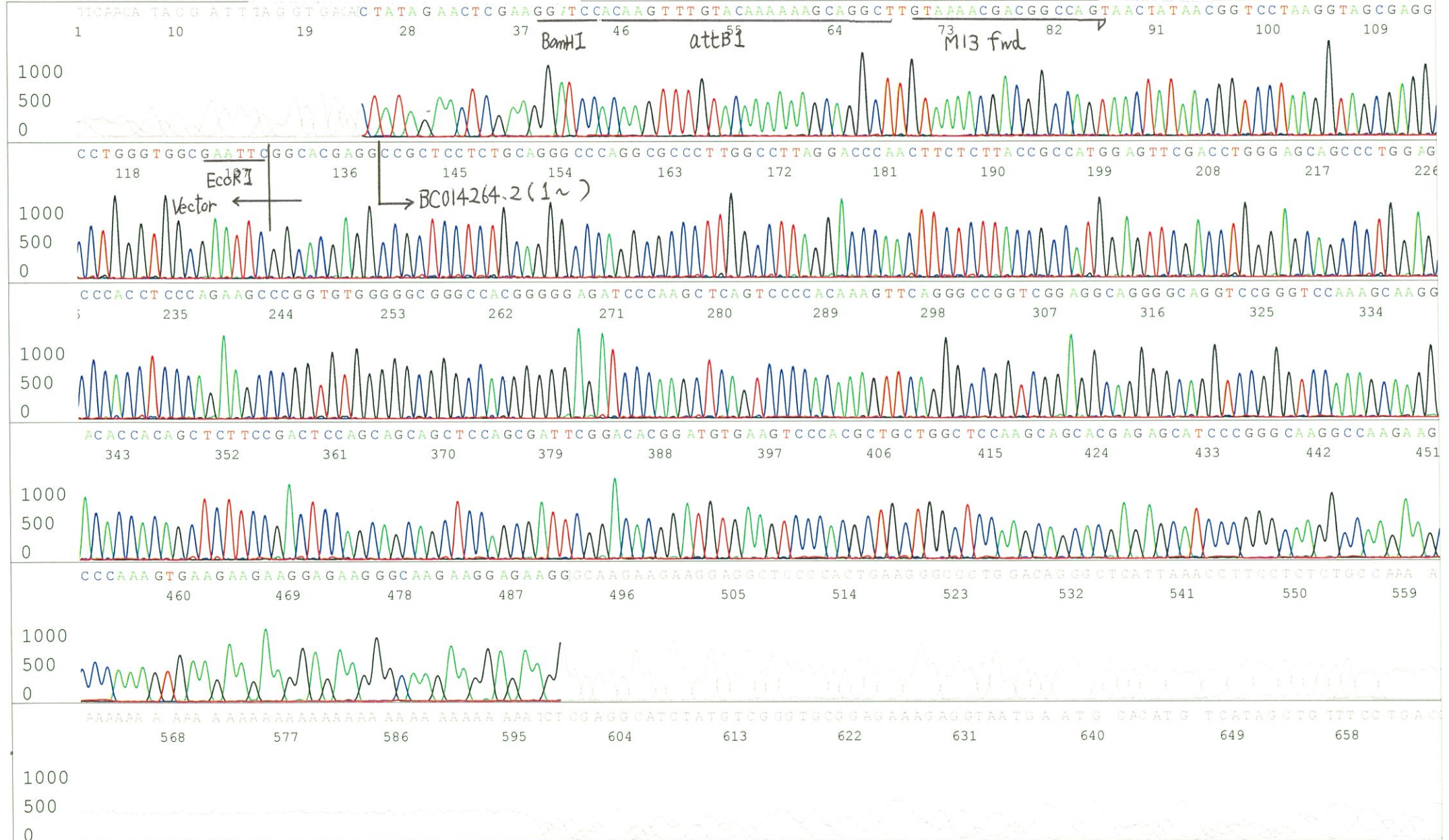
5' AACGCGGCTACAATTAATACATAACC 3'

Pts 1673 to 8332 Pk1 Loc:1641

(QV) < 40.

Spacing:10.28 Pts/Panel1350

Plate Name: 20180221_GNP



S/N G:83 A:82 T:110 C:159

Primer B: pOTB7-R

IRAL033B10_A8B9_pOTB7_R

Feb 21, 2018 05:44PM, JST

KB.bcp

KB_3500_POP7_BDTv3.mob

Gray line indicates quality value

Feb 21, 2018 06:00PM, JST

KB 1.4.1.8 Cap:10

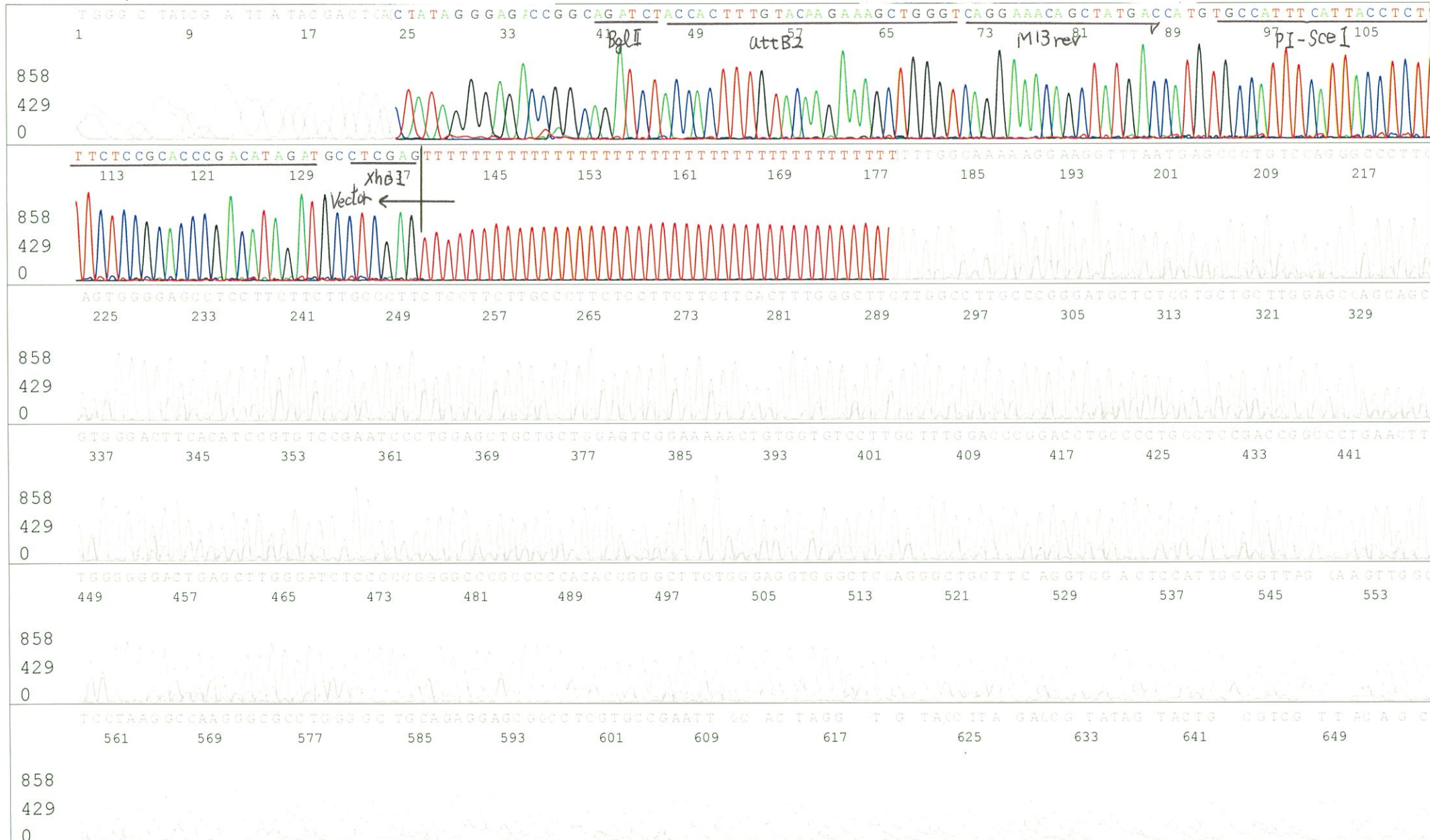
5' GTACTGCAGCCGATTCATTAATGC 3'

Pts 1673 to 8520 Pk1 Loc:1641

(QV) < 40.

Spacing:10.47 Pts/Panel1350

Plate Name: 20180221_GNP



S/N G:196 A:173 T:192 C:339

Primer C : Poly(A) region primer #0

IRAL033B10_A8B9_GNPmixture

KB_3500_POP7_BDTv3.mob

Pts 1676 to 8413 Pk1 Loc:1644

Version 6.0 HiSQV Bases: 668

Gray line indicates quality value

(QV) < 40.

Feb 21,2018 05:44PM, JST

Feb 21,2018 06:00PM, JST

Spacing:10.3 Pts/Panel1350

Plate Name: 20180221_GNP

KB 1.4.1.8 Cap:13

5' TTTTTTTTTTTTTTTTTTTTTTNNN 3'

