

RIKEN Clone ID : IRAL029P02

Lot#: 7566_A7H3

Vector : pOTB7

Gene	CLDN14	
Accession No.	BC012126.1	1233 bp
	<i>CDS</i>	720 bp

● Plasmid DNA purification

Date : 170807

Culture : LB (25 ug/ml Chloramphenicol) 5 ml -> at 37 deg C over night

Date : 170809

Purification : QIAGEN Miniprep kit -> dH₂O 100 ul

● Digestion by restriction enzyme/Concentration calibration

Date : 170809

DNA concentration (O.D.): 158 ng/ul

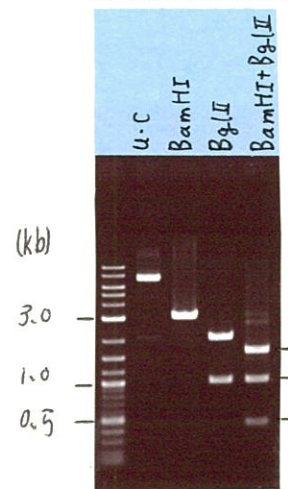
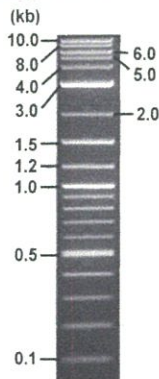
< Size of fragment expected from this clone >

DNA	0.6	ul
Enzyme (BamHI + BglII)	0.5 + 0.5	ul
Buffer H	1	ul
dH ₂ O	7.4	ul
Total	10	ul

BamHI	3.0	kb	
BglII	2.0, 1.0	kb	
BamHI + BglII	1.6kb (Vector)	1.0, 0.4	kb

Electrophoresis : 1% agarose gel, 1x TAE Buffer

Marker : 2-Log DNA Ladder (NEB#N3200L)



● Adjust plasmid DNA solution to 25 ng/ul

Date : 170821

DNA (158 ng/ul)	83.0	ul
10x TE	52.4	ul
dH ₂ O	389.1	ul
Total	524.5	ul

● Confirmation of the insertion sequence

Date : 170817

Primer A	pOTB7_F
Primer B	pOTB7_R
Primer C	-
List of Sequencing Primers	http://dna.brc.riken.jp/en/GNPclone3en.html

● Shipping

Conc. : 25 ng/ul, Volume : 40 ul

Conc. : ~~ng/ul~~, Volume : ~~ul~~

APPROVED BY : <http://dna.brc.riken.jp/index.html>



S/N G:239 A:178 T:224 C:355

Primer A: pOTB7-F

IRAL029P02_A7H3_pOTB7_F

Aug 17, 2017 10:11PM, JST

KB.bcp

KB_3500_POP7_BDTv3.mob

Gray line indicates quality value

Aug 17, 2017 10:25PM, JST

KB 1.4.1.8 Cap:4

5' AACGCGGCTACAATTAATACATAACC 3'

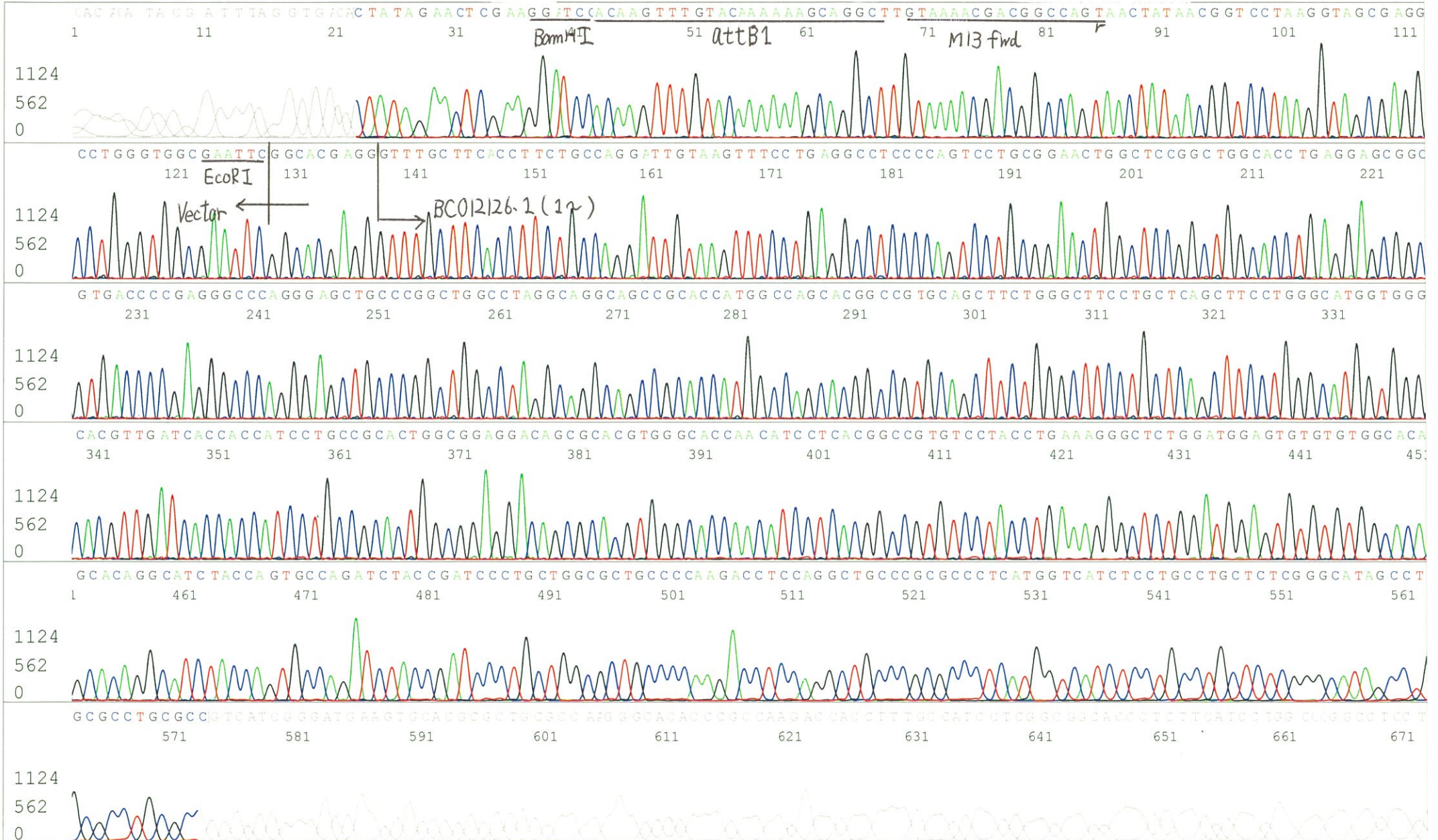
Pts 1678 to 8568 Pk1 Loc:1646

(QV) < 40.

Spacing:10.45 Pts/Panel1350

Version 6.0 HiSQV Bases: 685

ate Name: 20170817_MGE_GNP



S/N G:97 A:125 T:149 C:186

Primer B: pOTB7-R

IRAL029P02_A7H3_pOTB7_R

Aug 17,2017 10:11PM, JST

KB.bcp

KB_3500_POP7_BDTv3.mob

Gray line indicates quality value

Aug 17,2017 10:25PM, JST

KB 1.4.1.8 Cap:5

5' GTACTGCAGCCGATTCATTAATGC 3'

Pts 1671 to 8598 Pk1 Loc:1639

(QV) < 40.

Spacing:10.46 Pts/Panel1350

Plate Name: 20170817_MGE_GNP

